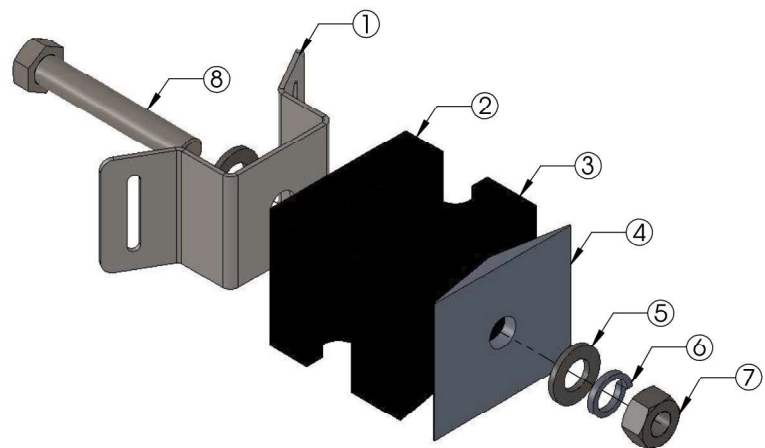
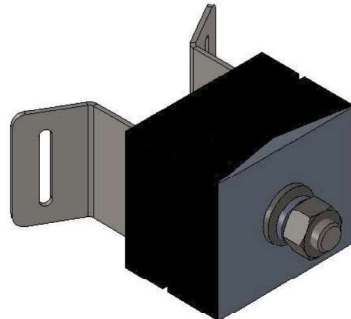
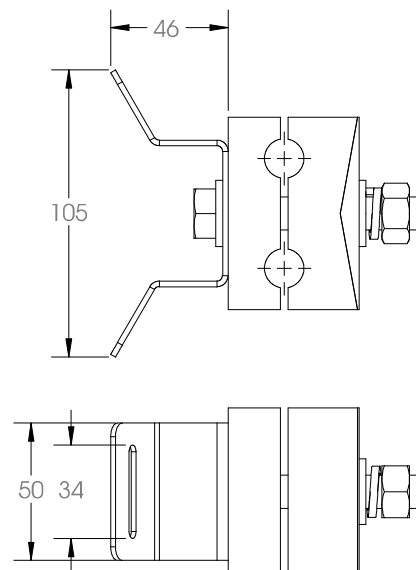




FIBERLIGN® Downlead Cushioned Mono Pole Clamp



ITEM NO.	DESCRIPTION	QTY
1	Monopole Bracket	1
2	Urethane Downlead Cushion	1
3	Urethane Downlead Cushion	1
4	Ext. Al. Cap.	1
5	M12 Stainless Steel Flat Washer	2
6	M12 Stainless Steel Spring Washer	1
7	M12 Stainless steel nut	1
8	M12 x 75 Hex set screw SS	1



CAT NO	RANGE (mm)
--------	------------

DCCMP 374/465	9.5 – 11.8
DCCMP 468/563	11.9 – 14.3
DCCMP 567/657	14.4 – 16.7
DCCMP 661/756	16.8 – 19.2
DCCMP 850/949	21.6 – 24.1

NOTES:

Attachment to be done using stainless steel banding strap
Bolt to be torqued to 60NM