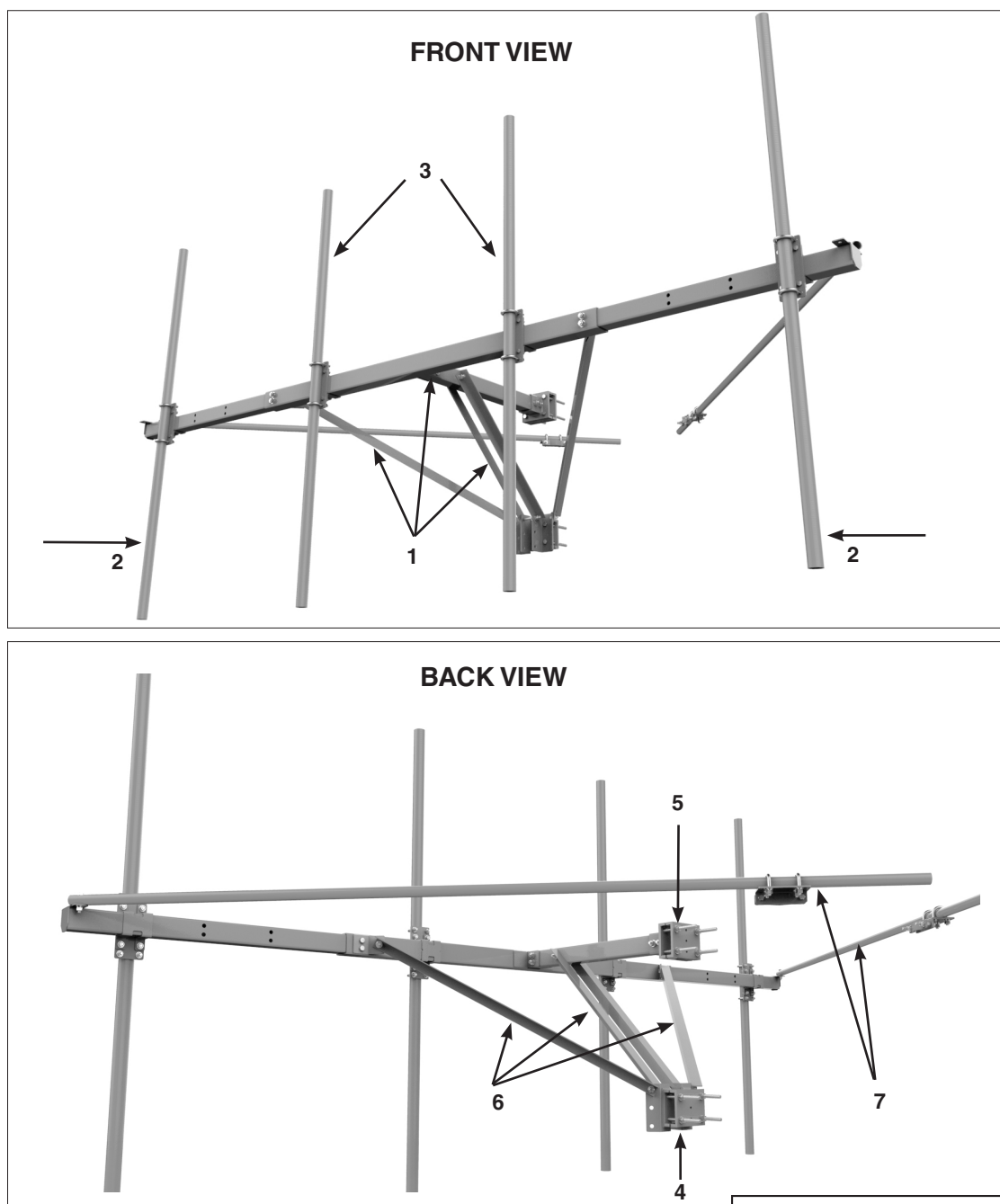




Adjustable Antenna Mount

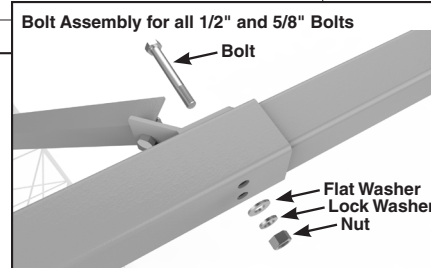
Be sure to read and completely understand this procedure before applying product. Be sure to select the proper PREFORMED™ product before application.



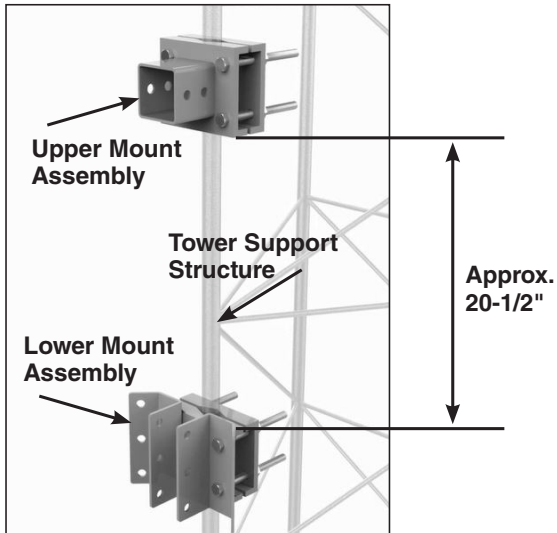
NOMENCLATURE

1. Telescoping Antenna Mount Structure
2. Small Antenna Pole Assemblies
(2 assemblies are included)
3. Large Antenna Pole Assemblies
(not included with base assembly)

4. Lower Mount Assembly
5. Upper Mount Assembly
6. Angle Support Structure
7. Tie Back Assemblies

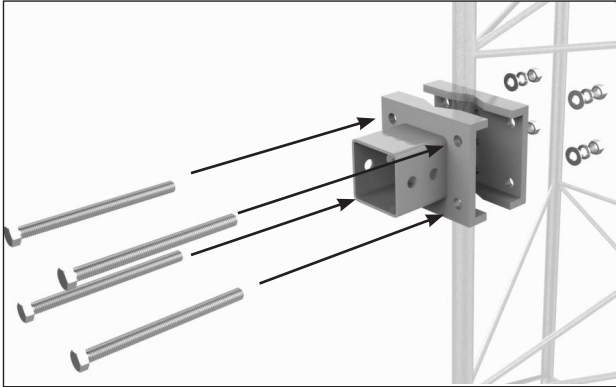


Step #1 Align the upper and lower tower mount assemblies to the tower.

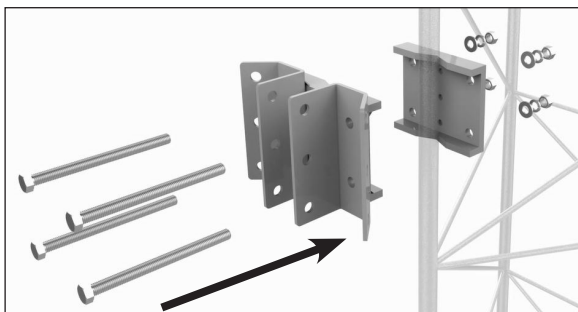


PLP Tip: If the tower support structure is impeding the installation on the lower mount assembly, it can be adjusted up 3" or down 3" on the tower support leg.

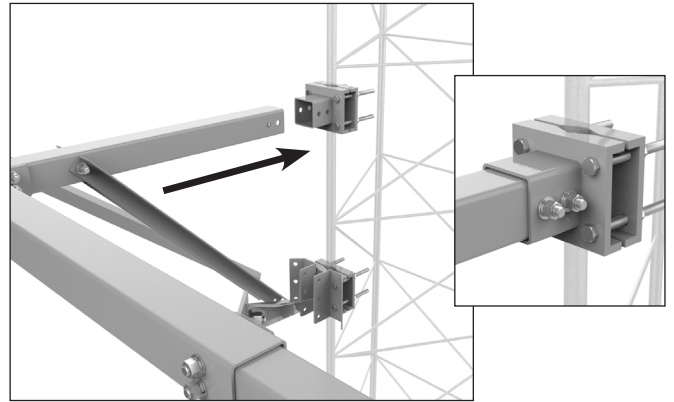
Step #2 Install the upper tower mount to the tower. Install the 5/8-11 x 8" bolts, flat washers, lock washer and nuts. Torque all four bolts to 60 ft-lbs.



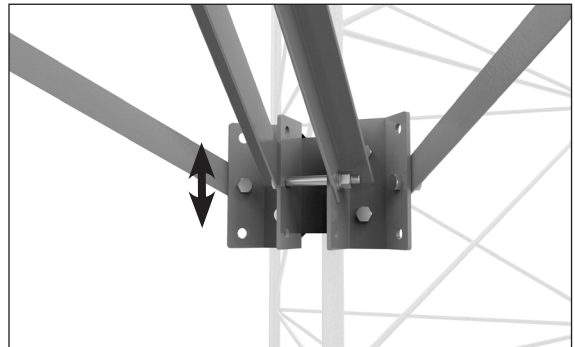
Step #3 Install the lower tower mount. Once the upper and lower tower mounts are installed, the main antenna mount structure is ready to be installed.



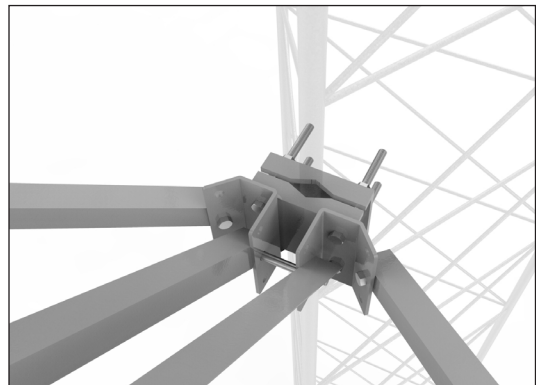
Step #4 After the main structure tube is inserted, install the two 5/8-11 x 5-1/4" bolts and torque to 60 ft-lbs.



Step #5 If the tower support structure interferes with the lower tower mount, it can be adjusted up 3" or down 3".

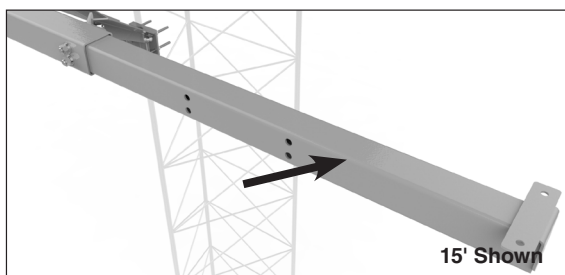
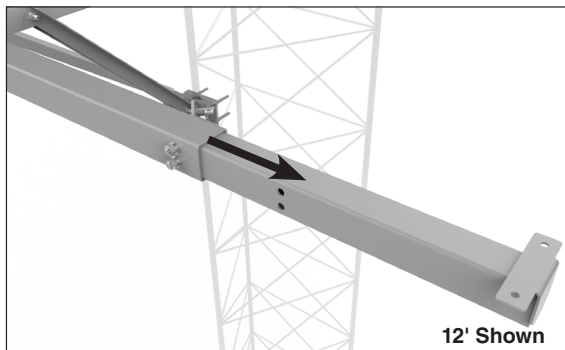
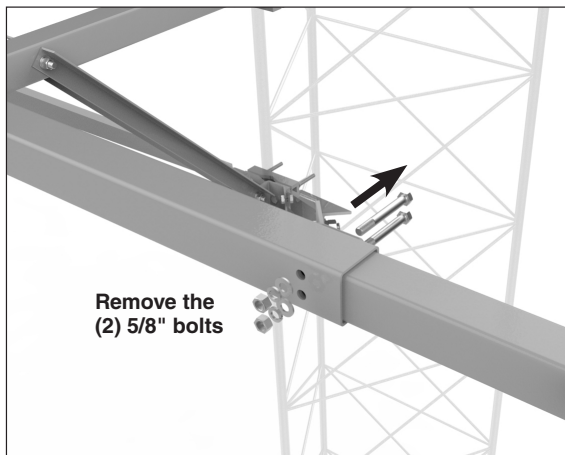
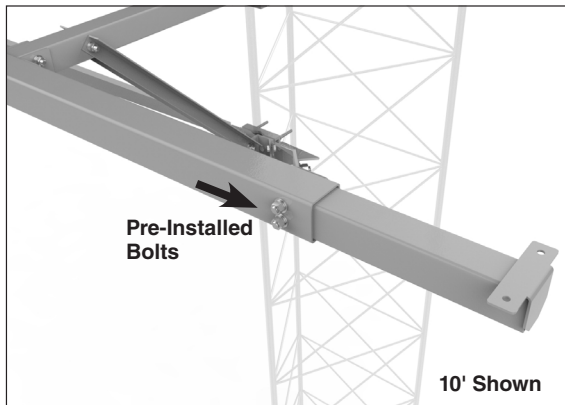


Step #6 Next, align the angle support structure with the appropriate holes. Install one 5/8-11 x 5-1/4" bolt, flat washer, lock washer and nut through the two center angle support brackets and the center of the lower tower mount. Then install the outer two 5/8-11 x 1-1/2" bolts, flat washers, lock washers and nuts. Torque all three 5/8 - 11 bolts to 60 ft-lbs.



Step #7 To adjust the Antenna Mount from 10' to 12' or 15' configurations loosen the four 5/8-11 x 5-1/4" bolts and telescope both outer square tubes outward.

PLP Tip: All poles ship in 10' configurations.



Reinstall and torque the two 5/8-5-1/4" bolts to 60 ft-lbs.

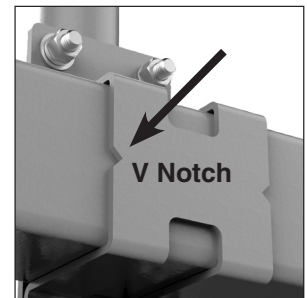
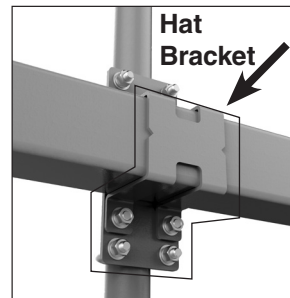
Step #8 Install the two 1/2" U-bolts, flat washers, lock washers, and nuts on the antenna pole with the backing plate and torque to 30 ft-lbs.



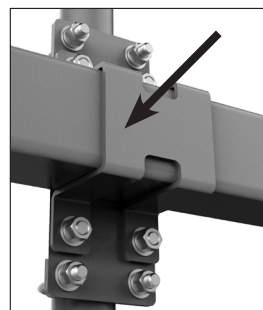
Step #9 Install the hat bracket on the back side of the Antenna Mount structure and align the previously assembled antenna pole and plate. Next, install the four 1/2-13 x 1-1/4" bolts, flat washers, lock washer, nuts and slide to the desired location. Finally, torque all four bolts to 30 ft-lbs. Follow Steps 7 and 8 for additional antenna pole assemblies.

PLP Tip: There are two different antenna pole assemblies:

- 1) The outer square tubes are 3"
 - 2) The larger inner square tubing is 3-1/2".
- The "V" notch on the hat bracket indicates the bracket is to be used on the larger inner square tube.



Step #10 **NOTE:** For the outer pole assemblies, a small hat bracket is provided and doesn't have a V Notch.

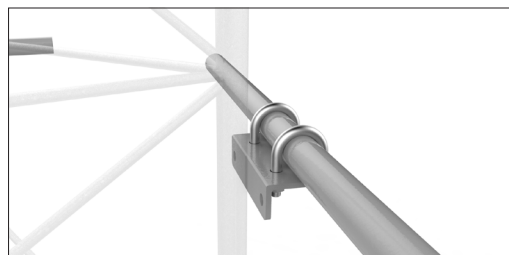
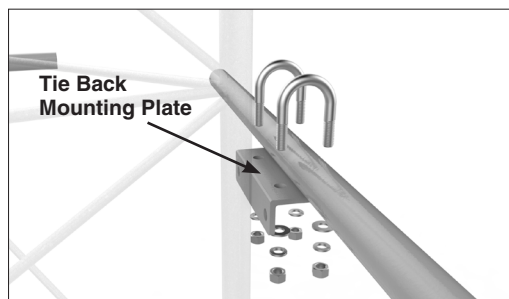


PLP Tip: The bracket without the "V" notch is installed on the outer 3" square tubing.

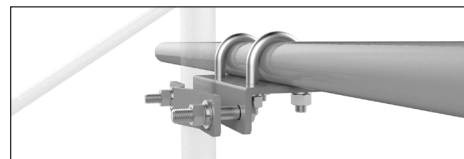
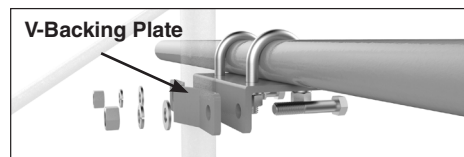
Step #11 Attach the tie back to the antenna mount structure with the 1/2" bolt, flat washers, lock washer, and nuts and torque to 30 ft-lbs.



Step #12 Align the Tie Back Mounting Plate and install the two 1/2" U-bolts and flat washers, lock washers, and nuts. Torque all bolts to 30 ft-lbs.

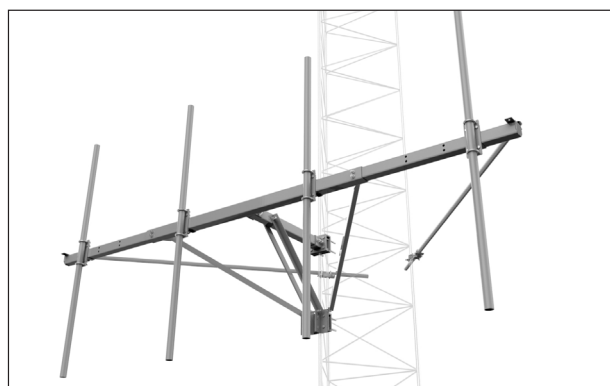


Step #13 Attach the two 1/2" bolts to the tie back and V-Backing Plate. Then attach the tie back assembly to the tower. Ensure the two U-bolts and the two 1/2" bolts are torqued to 30 ft-lbs.



Step #14 Ensure all bolts are torqued to the below requirements:

<u>Bolt Size</u>	<u>Torque Value</u>
5/8"	60 ft-lbs
1/2"	30 ft-lbs



Completed Antenna Mount shown above.

SAFETY CONSIDERATIONS

This application procedure is not intended to supersede any company construction or safety standards. This procedure is offered only to illustrate safe application for the individual. **FAILURE TO FOLLOW THESE PROCEDURES MAY RESULT IN PERSONAL INJURY OR DEATH.**

Do not modify this product under any circumstances.

This product is intended for use by trained technicians only. **This product should not be used by anyone who is not familiar with, and not trained to use it.**

When working in the area of energized lines, extra care should be taken to prevent accidental electrical contact.

For proper performance and personal safety, be sure to select the proper size PREFORMED™ product before application.

PREFORMED products are precision devices. To insure proper performance, they should be stored in cartons under cover and handled carefully.



PREFORMED LINE PRODUCTS