



**PREFORMED** LINE PRODUCTS  
The connection you can count on.

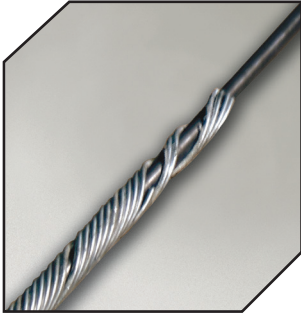
Cross-brace metal buildings  
better and faster with the  
**BRACE-GRIP® DEAD-END**  
**FOR ROD SYSTEM**



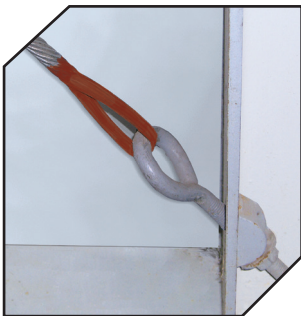
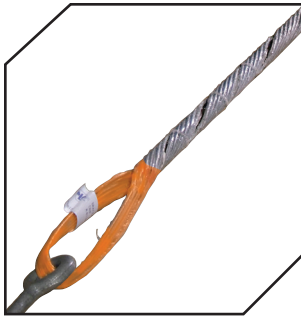
-  COMMUNICATIONS
-  ENERGY
-  SPECIAL INDUSTRIES
-  SOLAR



## The BRACE-GRIP® for Rod system offers real advantages for metal building manufacturers and dealers.



BRACE-GRIP for Rod



The BRACE-GRIP is a cost effective solution for cross bracing on metal buildings.

### Unique design, better performance

The BRACE-GRIP System consists of a helically formed dead-end that develops 100 percent or more of the published rated breaking strength of the steel rod for which it is designed.

### Reduces installation costs and time

The BRACE-GRIP Dead-end system reduces costs for metal building manufacturers by cutting down on the amount of manufacturing time and space needed. Conventional techniques required additional space for expensive thread cutting lathes, and more time and skill to run these machines. The BRACE-GRIP Dead-end eliminates the need for costly machinery and reduces installation time because it is easily applied without tools.

### Fewer field problems

BRACE-GRIP Dead-ends are easier to manage in the field than conventional thread cut rods. No damaged threads on-site and since the BRACE-GRIP applies directly to the outside of the rod, no threading and repainting is necessary. BRACE-GRIP Dead-ends arrive in the field ready to apply.

### Reduced material costs

With conventional cross-bracing methods, the metal building contractor must purchase larger rods and thread them down. The BRACE-GRIP adapts to the outer diameter of the rod and requires no threading. Thus, you start with smaller diameter rods which will deliver lower costs.

### Various sizes available

BRACE-GRIP Dead-ends accommodate 1/2" through 1-1/4" diameter Rod.

### PLP reliability

PLP products must pass a series of tests conducted in a laboratory. Lot Testing Certifications are readily available to verify conformance to ASCE 19-96 3.2.2. which requires strand attachments to meet a minimum of 100% of published rated breaking strength of the Rod.

Combine these capabilities with our experienced engineering and field-support staff, and you've got PLP reliability. That's why PLP has been a dependable supplier since 1947.

For more information on the BRACE-GRIP System, please contact PLP.

**NOTE:** All BRACE-GRIPS for Rod are intended for Rod ONLY and should not be used on strand. Rod BRACE-GRIPS will be color-coded ORANGE in the loop.



World Headquarters  
660 Beta Drive  
Cleveland, Ohio 44143

Mailing Address:  
P.O. Box 91129  
Cleveland, Ohio 44101

Telephone: 440.461.5200  
Fax: 440.442.8816  
Web Site: [www.preformed.com](http://www.preformed.com)  
E-mail: [inquiries@preformed.com](mailto:inquiries@preformed.com)

BRACE-GRIP Dead-end Catalog Numbers	Rod Size	Recommended Eye Bolt Size	Calculated Rated Holding Strength (lbs.)
BRG-1785	1/2" (12.7 mm)	7/8" (22.2 mm)	27,200
BRG-1786	9/16" (14.2 mm)	1" (25.4 mm)	35,950
BRG-1787	5/8" (15.8 mm)	1-1/4" (31.7 mm)	35,950
BRG-1788	3/4" (19.0 mm)	1-1/4" (31.7 mm)	49,350
BRG-1790	1" (25.4 mm)	1-1/4" (31.7 mm)	72,600
BRG-1791	1-1/4" (31.7 mm)	1-1/4" (31.7 mm)	100,000