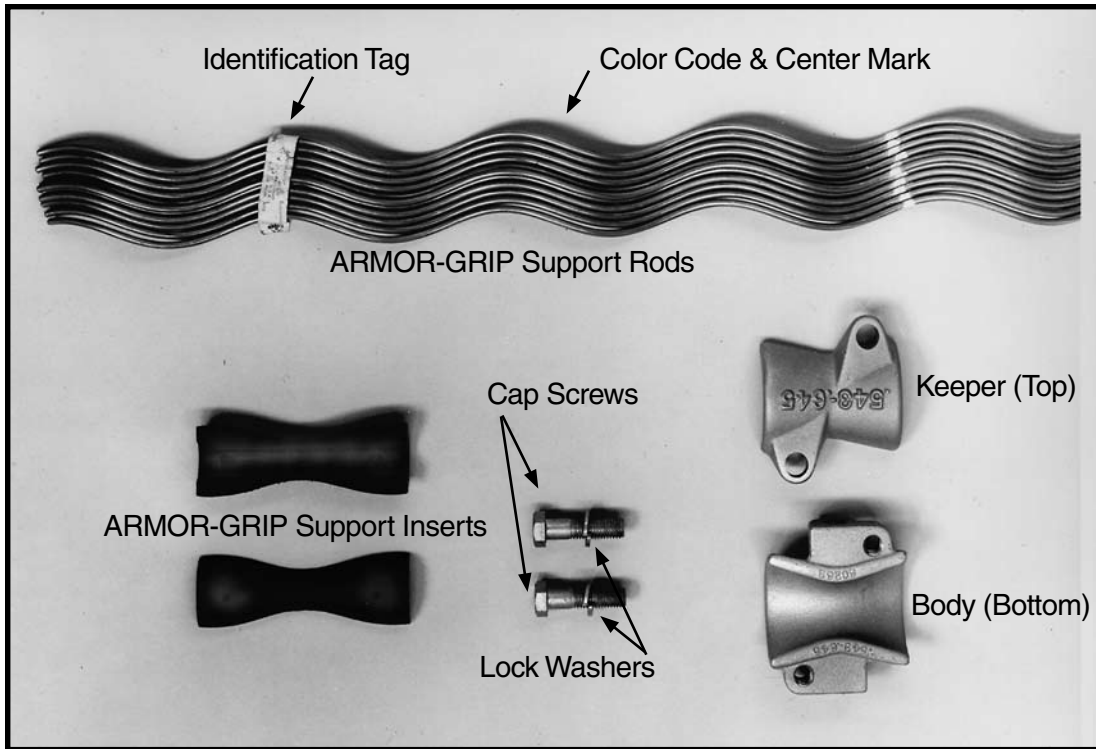




ARMOR-GRIP® Support

Be sure to read and completely understand this procedure before applying product. Be sure to select the proper PREFORMED™ product before application.



Step #1 ARMOR-GRIP SUPPORT NOMENCLATURE

Step #2 Plumb stringing block and mark conductor at center of sheave. Use a felt marker pen or crayon – do not scratch conductor which may cause a stress riser affecting conductor fatigue life. Suspend the conductor beyond the end of the rods to clear the insulator and stringing block.



Step #3 Center inserts over conductor center mark and tape in place with a thin layer of tape.

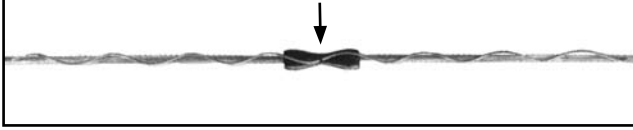


PLP Tip: For extremely corrosive coastal environments, the application of a liberal amount of a conductive oxide inhibitor to the conductor under the AGS inserts will minimize the possibility of corrosive contaminant build-up.

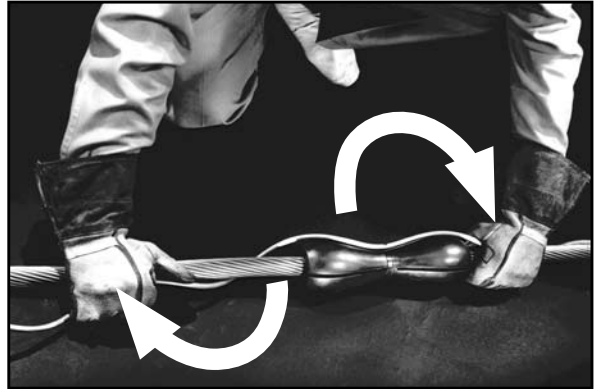
Step #4a Align center mark of one rod with center of the inserts. Align the rod so it is parallel with the conductor as shown. **DO NOT DISTORT ANY ROD AT ANY TIME.**

TOP VIEW

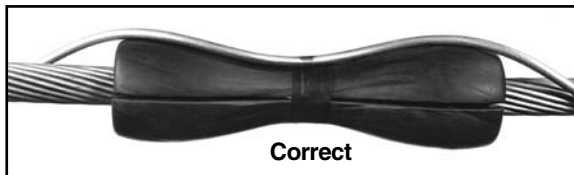
Insert and Rod Alignment



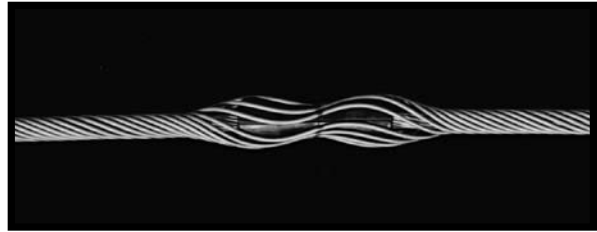
Step #5 Wrap the rod on the conductor for two wraps on each side of the inserts in order to keep the rod in place and avoid accidental unwrapping.



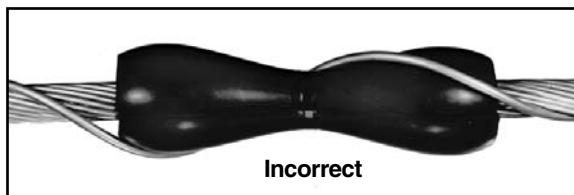
Step #4b Make sure the center mark of the rod faces up and the curve of the rod lies down into the contour of the inserts as shown.



Step #6 Apply all remaining rods in the same manner. Space the rods more or less evenly around the insert to avoid a large gap buildup on the insert as the final rods are applied. **MAKE SURE NO RODS ARE CROSSED OR DISTORTED.**



Step #4c Improper application of rod shown below. Do not wrap rods around the inserts as shown.



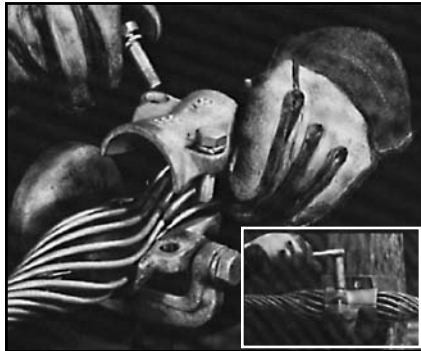
Step #7 Complete application by wrapping rods into place either individually or as a group. Make sure all ends are snapped into place completely around the conductor.



Step #8 Install Body (bottom unit) on trunion cap and tighten trunion cap screw until lock washer is flat or in accordance with the insulator manufacturer's recommendations.



Step #9 Set conductor into Body, aligning the center of the rods with the center of the Body. Install Keeper (top unit) over the rods and insert cap screws and lock washers into the holes. Tighten the cap screw **only** until lock washer is flat (see insert photo). A relatively low torque value of **10 to 15 ft. pounds** is enough to secure the keeper to the housing, and further tightening may cause damage to the unit.



Step #10 Completed application of ARMOR-GRIP Support.



Installation Guidelines:

1. This procedure is an aid to installation and does not imply any line design recommendations.
2. The ARMOR-GRIP® Support should be **used only** on the size and type conductor for which it is designed. Lay direction of the rods and the conductor should be the same: right-hand lay for aluminum based conductors and left-hand lay for strand. Consult PLP for use of ARMOR-GRIP Support on conductors other than those sizes and types listed in the ARMOR-GRIP Support catalog section.
3. The ARMOR-GRIP Support is a precision device and should be stored and handled carefully to prevent damage. Special care should be given to the ARMOR-GRIP Support rods to avoid distortion and damage.
4. ARMOR-GRIP Support rods are not interchangeable with either standard Armor Rods or ARMOR-GRIP Suspension rods.
5. On certain sizes of ARMOR-GRIP Support there will appear to be enough gap between the rods to insert an extra rod, but all ARMOR-GRIP Support rods are packed in sets. Apply only the number of rods in the set. In case of doubt, consult the ARMOR-GRIP Support catalog section for the correct number of rods per set. **DO NOT ADD EXTRA RODS.**
6. These same procedures should be followed for application on vertical or horizontal line post insulators.
7. A maximum line angle of 30° is recommended for use with a single ARMOR-GRIP Support unit. A special double ARMOR-GRIP Support unit is available for line angles between 31° and 60°. Consult Preformed for application and installation information for Double ARMOR-GRIP Support.
8. The ARMOR-GRIP Support cap screws should be tightened **only** until the lock washer is flat. A relatively low torque value of 10 to 15 ft. pounds is enough to secure the Keeper to the housing. Further tightening may cause damage to the unit.

9. Special Note:

Each component of the ARMOR-GRIP Support assembly is identified by size for the conductor diameter range for which it is designed.

These identifications are located on each component in the following location:

Body: Cast into the inside edge of the lip

Keeper: Cast into the outside surface on the top

Insert: Molded on the inside of each insert

Rods: Listed on the I.D. tag.

CAUTION:

Each Housing Unit (Keeper and Body) has a wide conductor range and is an overlapping design that incorporates several different pairs of inserts and sets of rods. Each pair of inserts has a narrow conductor range and will accommodate a few different sets of rods. Each set of rods has a very narrow conductor range and is designed for use only on the size conductor listed on the I.D. tag. **Be sure to select the correct combination of Rods, Inserts, Body and Keeper before installation.**

SAFETY CONSIDERATIONS

This application procedure is not intended to supersede any company construction or safety standards. This procedure is offered only to illustrate safe application for the individual. **FAILURE TO FOLLOW THESE PROCEDURES MAY RESULT IN PERSONAL INJURY OR DEATH.**

This product is intended for a single (one time) use and for the specified application. **Do not reuse or modify this product under any circumstances.**

This product is intended for use by trained technicians only. **This product should not be used by anyone who is not familiar with, and not trained to use it.**

When working in the area of energized lines, extra care should be taken to prevent accidental electrical contact.

For proper performance and personal safety, be sure to select the proper size PREFORMED™ product before application.

PREFORMED products are precision devices. To insure proper performance, they should be stored in cartons under cover and handled carefully.



PREFORMED LINE PRODUCTS

P.O. Box 91129, Cleveland, Ohio 44101 • 440.461.5200 • www.preformed.com • e-mail: inquiries@preformed.com

SP2132-2