

APPLICATION PROCEDURE
& SAFETY CONSIDERATIONS
PREFORMED LINE PRODUCTS

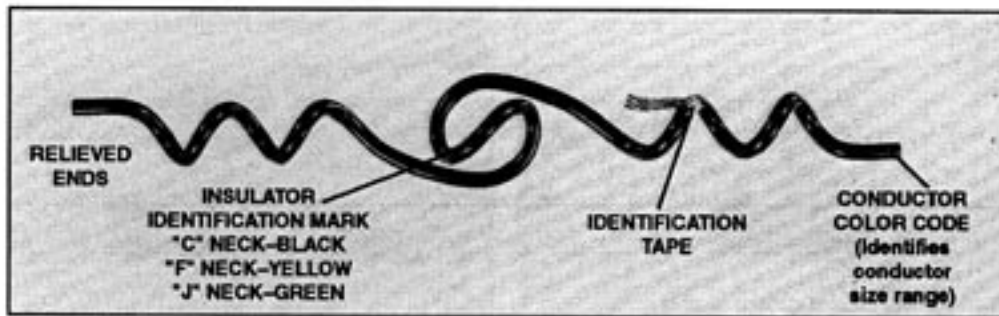


SEPTEMBER 1995

PLASTIC LINE TIE

FOR TOP GROOVE, SINGLE INSULATOR INSTALLATIONS

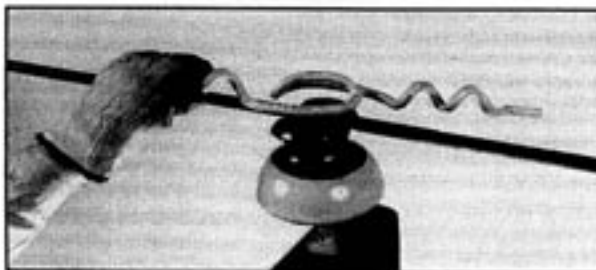
Be sure to read and completely understand this procedure before applying product. Be sure to select the proper PREFORMED™ product before application.



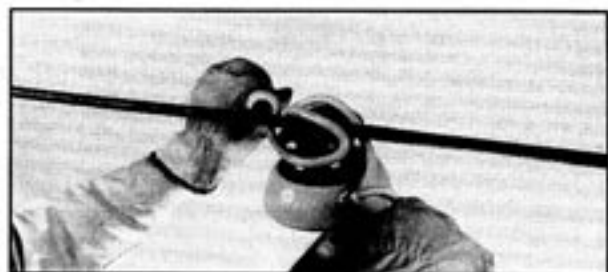
Plastic Line Tie as received in the field

IMPORTANT: Plastic Line Ties are intended for use with plastic jacketed conductors. Their performance is significantly influenced by the line design, voltage, insulators and environmental conditions; consequently, the user should determine the suitability of plastic ties for the intended installation.

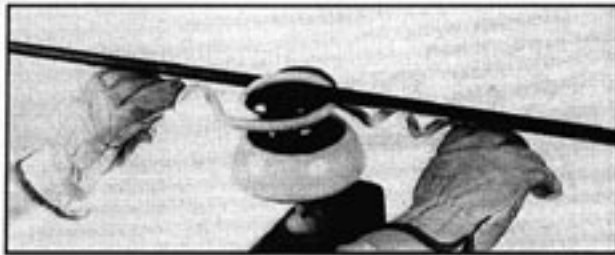
HAND APPLICATION



1.00 Position the center of the PREFORMED™ Plastic Line Tie over the center of the insulator, with both legs parallel to the conductor.



2.00 Hold one leg with each hand as shown. Then press down lightly and rotate the Tie in a clockwise direction. Make certain that both legs go under the conductor. This must be done to ensure the conductor is secured to the insulator.



3.00 Continue to rotate the Plastic Line Tie in a clockwise direction around and under the neck of the insulator, until the legs are again parallel to the conductor.



4.00 Wrap one leg of the Plastic Line Tie as shown. Make sure to snap the end of the leg into place with slight thumb pressure.

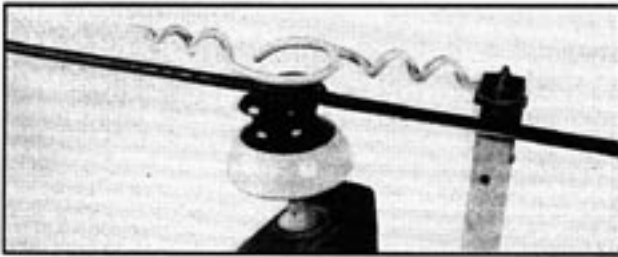


5.00 Wrap on the other leg of the Plastic Line Tie as shown. Make sure to snap the end of the leg into place. MAKE SURE TIE LOOP IS TIGHT ON INSULATOR NECK AND UNDER INSULATOR HEAD.

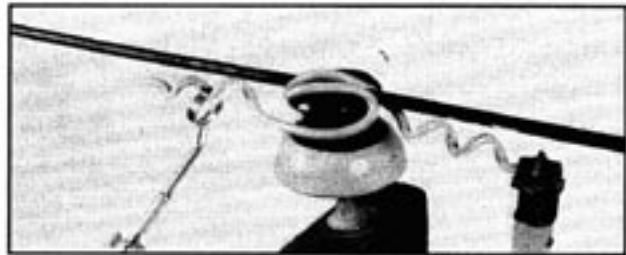


6.00 Completed application of the PREFORMED™ Plastic Line Tie.

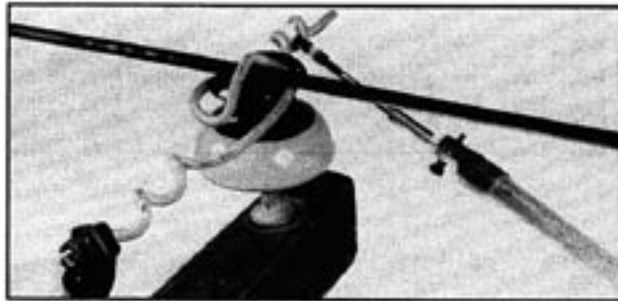
HOT-STICK APPLICATION



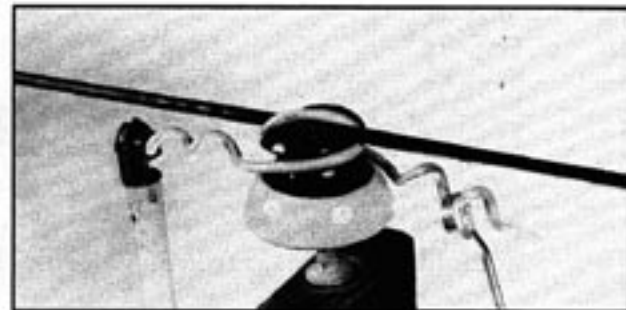
7.00 Grasp one leg of the Plastic Line Tie in the hot stick. Then position the center of the Plastic Line Tie over the center of the insulator with both legs parallel to the conductor.



8.00 Slide the Applicator Ring Tool over the other leg of the Plastic line Tie and Maintain pressure as shown.



9.00 Rotate the tie in a clockwise direction. Make certain that both legs go under the conductor.



10.00 Continue to rotate the Plastic Line Tie in a clockwise direction around and under the neck of the insulator, until the legs are again parallel to the conductor. This must be done to ensure the conductor is secured to the insulator.



11.00 Using the Applicator Ring Tool, wrap on one leg of the Plastic Line Tie. Make sure to snap the leg into place as shown.



12.00 Wrap on the other leg of the Plastic Line Tie as shown, making sure to snap the end of the leg into place. MAKE SURE TIE LOOP IS TIGHT ON INSULATOR NECK AND UNDER INSULATOR HEAD.



13.00 Completed application of the PREFORMED™ Plastic Line Tie.

SAFETY CONSIDERATIONS

1. This application procedure is not intended to supersede any company construction or safety standards. This procedure is offered only to illustrate safe application for the individual. **CAUTION: FAILURE TO FOLLOW THESE PROCEDURES AND RESTRICTIONS MAY RESULT IN PERSONAL INJURY OR DEATH.**
2. This product is intended for a single (one-time) use and for the specified application. **CAUTION: DO NOT REUSE OR MODIFY THIS PRODUCT UNDER ANY CIRCUMSTANCES.**
3. This product is intended for use by trained craftspeople only. This product **SHOULD NOT BE USED** by anyone who is not familiar with, and trained in the use of it.
4. When working in the area of energized lines with this product, **EXTRA CARE** should be taken to prevent accidental electrical contact.
5. For **PROPER PERFORMANCE AND PERSONAL SAFETY** be sure to select the proper size **PRE-FORMED™** Plastic Line Tie before application.
6. **PREFORMED** Plastic Line Ties are precision devices. To insure proper performance, they should be stored in cartons under cover and handled carefully.

PREFORMED LINE PRODUCTS 
P.O. Box 91129, Cleveland, Ohio 44101 (440) 461-5200 www.preformed.com

SP2618-1