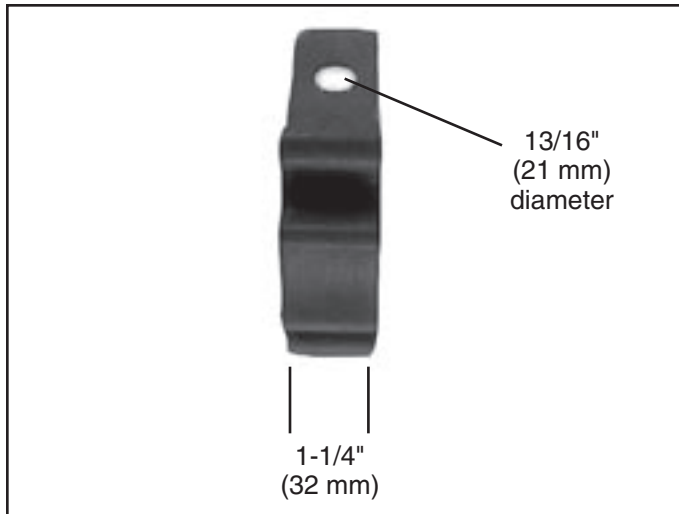


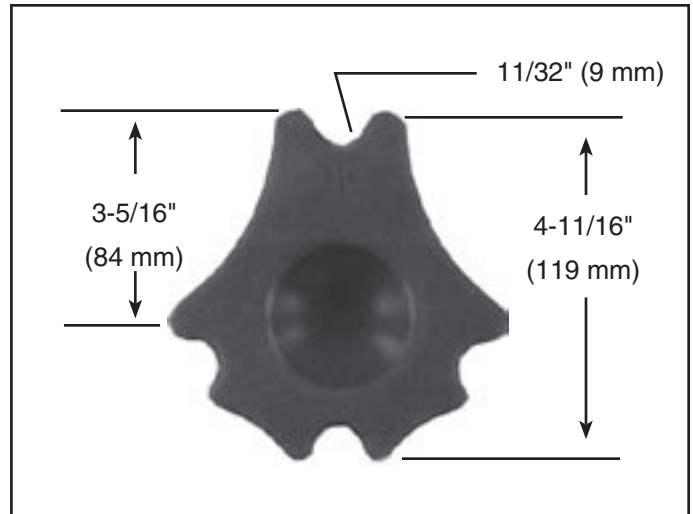


## CABLE SEPARATOR FOR USE WITH TRIPLEX OR QUADRAPLEX CABLE

Be sure to read and completely understand this procedure before applying product. Be sure to select the proper size PREFORMED™ product before application.



**FIGURE 1 - SIDE VIEW**

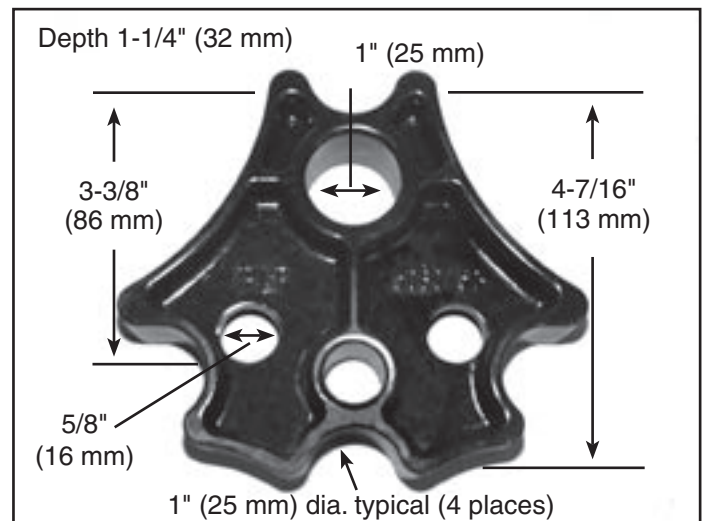


**FIGURE 2 - FRONT VIEW**

5060100

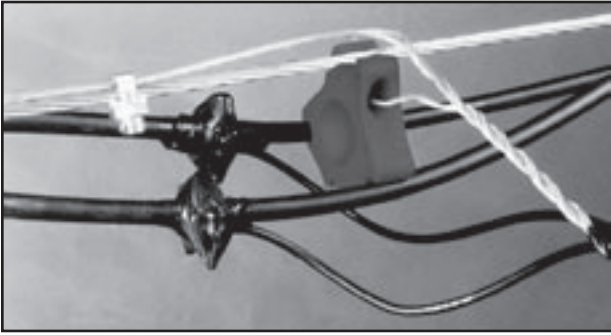
### 1.00 FEATURES

- Lightweight, less than 1 pound each
- Unbreakable black polyurethane
- Non-corrosive material
- Deeper conductor grooves for positive conductor placement
- Extra conductor groove for Quadraplex applications
- Easy installation
- UV stabilized
- High dielectric strength suitable for up to 750 volts
- Similar in size to porcelain separators
- Other designs available

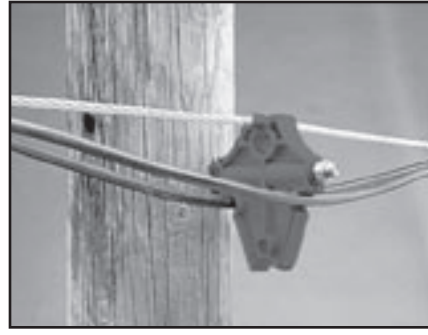


**FIGURE 3 - FRONT VIEW**

5060150



**FIGURE 4 - TYPICAL INSTALLATION -  
CABLE SEPARATOR**



**FIGURE 5 - TYPICAL INSTALLATION -  
POLE-MOUNT CABLE SEPARATOR**

## **SAFETY CONSIDERATIONS**

This application procedure is not intended to supersede any company construction or safety standards. This procedure is offered only to illustrate safe application for the individual.  
**FAILURE TO FOLLOW THESE PROCEDURES MAY RESULT IN PERSONAL INJURY OR DEATH.**

This product is intended for a single (one time) use and for the specified application.  
**Do not reuse or modify this product under any circumstances.**

This product is intended for use by trained technicians only. **This product should not be used by anyone who is not familiar with, and not trained to use it.**

When working in the area of energized lines, extra care should be taken to prevent accidental electrical contact.

For proper performance and personal safety, be sure to select the proper size PREFORMED™ product before application.

PREFORMED products are precision devices. To insure proper performance, they should be stored in cartons under cover and handled carefully.



# **PREFORMED** LINE PRODUCTS

P.O. Box 91129, Cleveland, Ohio 44101 • 440.461.5200 • [www.preformed.com](http://www.preformed.com) • e-mail: [inquiries@preformed.com](mailto:inquiries@preformed.com)

**SP2692-1**