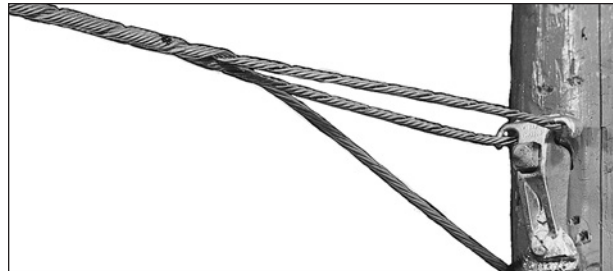


False Dead-end

False Dead-ends

PREFORMED False Dead-ends are a fast, safe, and economical method for false dead-ending strand. They are designed to be easily applied without any special tools, and because False Dead-ends are made from the same material as the strand, they will hold the same published rated breaking strength.



Galvanized Steel, C-Coat for use on Extra High Strength or Utility Grade Strands

| Catalog Number | Strand 7-Wire | Mean Diameter | Length | Color Code | Units Per Carton | Wt./Lbs. Per Carton |
|----------------|---------------|---------------|--------|------------|------------------|---------------------|
| GFDE-2121 | ¼" | .240" | 36" | Yellow | 25 | 17 |
| GFDE-2123 | 5/16" | .327" | 39" | Black | 25 | 24 |
| GFDE-2124 | 3/8" | .360" | 42" | Orange | 25 | 30 |
| GFDE-2125 | 7/16" | .435" | 48" | Green | 25 | 52 |
| GFDE-2126 | ½" | .495" | 50" | Blue | 25 | 71 |

Note: Left Hand Lay Standard.

For use on Mischmetal Alloy (AL/ZN) Strand

| Catalog Number | Strand 7-Wire | Mean Diameter | Length | Color Code | Units Per Carton | Wt./Lbs. Per Carton |
|----------------|---------------|---------------|--------|------------|------------------|---------------------|
| BFDE-9121 | ¼" | .240" | 36" | Yellow | 25 | 17 |
| BFDE-9123 | 5/16" | .327" | 39" | Black | 25 | 24 |
| BFDE-9124 | 3/8" | .360" | 42" | Orange | 25 | 30 |
| BFDE-9125 | 7/16" | .435" | 48" | Green | 25 | 52 |
| BFDE-9126 | ½" | .495" | 50" | Blue | 25 | 71 |

Note: Left Hand Lay Standard.

PLP mischmetal formed wire products are acceptable for use with Bezinal® and Galfan® coated strands.

Bezinal® is a registered trademark of the Bekaert Corporation.

Galfan® is a registered trademark of the Galfan Technology Centre, LLC.