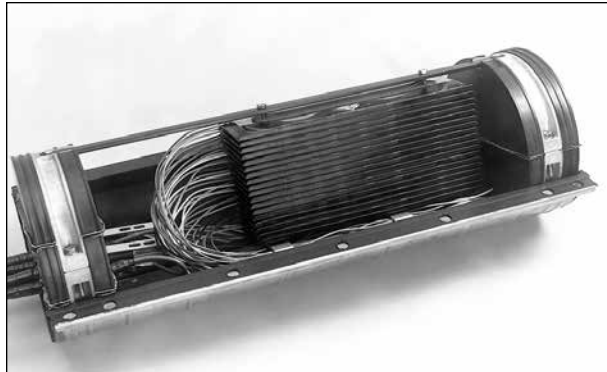


# COYOTE® Splice Case (ADOBE™ Series)

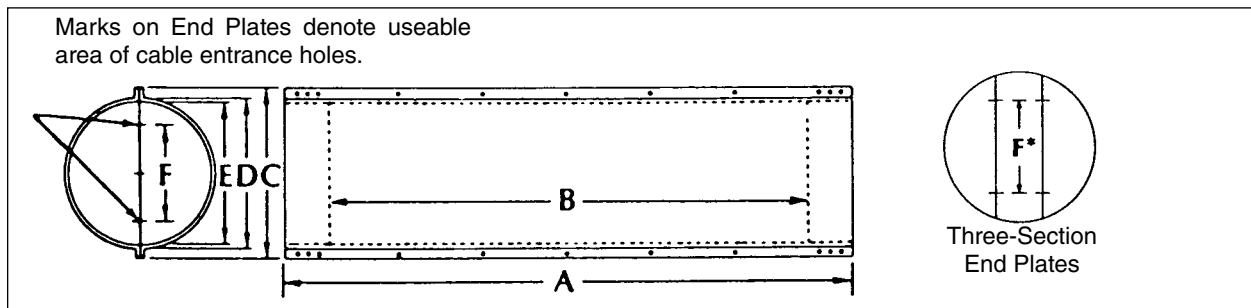


**Low profile ADOBE™ Series Splice Trays allow more splices to be stored in groups of 12 or 24**

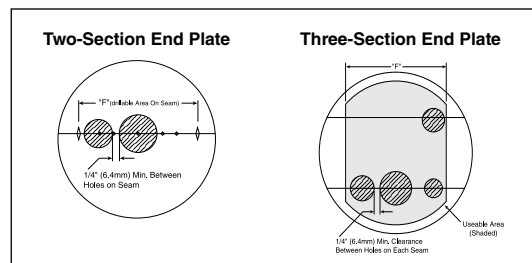
For applications which require a limited number of splices per splice tray, the COYOTE Splice Case configured for 12-Count or 24-Count ADOBE Splice Trays provides the answer. The low profile ADOBE Splice Trays combined with the versatile buffer tube management system of the COYOTE Splice Case, organize and protect the buffer tubes and fibers while maintaining maximum overall storage capacity.

See pages 2-5 through 2-7 for End Plate, Future Cable Port Kits, Mounting Brackets and other common COYOTE Splice Case accessories and tools.

COYOTE Splice Case (ADOBE Series) Kit	
Catalog Number	Description (mm)
8006687	6.5" x 28" (165 x 711) COYOTE Splice Case Kit, configured for ADOBE-12 or ADOBE-24 Splice Trays. Includes: One Three-Section DLX End Plate, One Two-Section End Plate, Buffer Tube Storage Compartment and Four L-Brackets.
8006689	8.0" x 28" (203 x 711) COYOTE Splice Case Kit, configured for ADOBE-12 or ADOBE-24 Splice Trays. Includes: One Three-Section DLX End Plate, One Two-Section End Plate, Buffer Tube Storage Compartment and Four L-Brackets.
8006839	8.0" x 28" (203 x 711) COYOTE Express Splice Case Kit, configured for ADOBE-12 or ADOBE-24 Splice Trays. Includes: One Three-Section DLX End Plate, One Two-Section End Plate, Buffer Tube Storage Compartment and Four L-Brackets.
8006691	9.5" x 28" (241 x 711) COYOTE Splice Case Kit, configured for ADOBE-12 or ADOBE-24 Splice Trays. Includes: One Three-Section DLX End Plate, one Two-Section End Plate, Buffer Tube Storage Compartment and Four L-Brackets.
8006840	9.5" x 28" (291 x 711) COYOTE Express Splice Case Kit, configured for ADOBE-12 or ADOBE-24 Splice Trays. Includes: One Three-Section DLX End Plate, One Two-Section End Plate, Buffer Tube Storage Compartment and Four L-Brackets.
8006788	12.5" x 28" (318 x 711) COYOTE Splice Case Kit, configured for ADOBE-24 Splice Trays. Includes: one Three-Section DLX End Plate, one Two-Section End Plate, Buffer Tube Storage Compartment and Six L-Brackets.



\*Spacing of 1/4" required between holes drilled along the seams of two and three section end plate in the "usable area".



Dimensions (mm)						
Splice Case	A	B	C	D	E	F
6.5" x 28"	28.4" (721)	22.7" (577)	9.25" (235)	7.0" (178)	6.5" (165)	4.1" (104)
8.0" x 28"	28.4" (721)	22.7" (567)	10.5" (267)	8.5" (216)	8.0" (203)	5.6" (142)
9.5" x 28"	28.4" (721)	21.6" (549)	12.5" (318)	10.0" (254)	9.5" (241)	7.1" (180)



# COYOTE® Splice Case (ADOBE™ Series)

ADOBE Splice Trays	
Catalog Number	Description
8001122	ADOBE-12 Splice Tray (12-Count) with Heat Shrink Splice Block Includes: tray, cover, tie wraps, and felt strips
8001096	ADOBE-12 Splice Tray (12-Count) with Molded-In Splice Block Includes: tray, cover, tie wraps, and felt strips
8001120	ADOBE-12 Splice Tray — Blank Includes: tray, cover, tie wraps, and felt strips
8001121	ADOBE-24 Splice Tray (24-Count) with Heat Shrink Splice Block Includes: tray, cover, tie wraps, and felt strips
8001119	ADOBE-24 Splice Tray — Blank Includes: tray, cover, tie wraps, and felt strips

ADOBE-12 Splice Trays are 13" (330 mm) L x 3-15/16" (100 mm) W x 15/16" (9 mm) H  
 ADOBE-24 Splice Trays are 13" (330 mm) L x 4-3/4" (121 mm) W x 11/32" (9 mm) H

Capacity					
Splice Tray Catalog Number	Closure (mm)	Useable Splice Protectors	Splice Capacity per Tray	Max. Number of Trays per Closure	Max. Closure Splice Capacity
8001122	6.5" x 28" (165 x 711)	Heat Shrink Only	12	12	144
8001096		Protected Fusion	12	12	144
8001121		Heat Shrink Only	24	8	192
8001122	8.0" x 28" (203 x 711)	Heat Shrink Only	12	16	192
8001096		Protected Fusion	12	16	192
8001121		Heat Shrink Only	24	12	288
8001122	9.5" x 28" (241 x 711)	Heat Shrink Only	12	18	216
8001096		Protected Fusion	12	18	216
8001121		Heat Shrink Only	24	14	336
8001121	12.5" x 28" (318 x 711)	Heat Shrink Only	24	18	432

For 9.5" x 28" (241mm x 721mm) Splice Case with 24 splices per splice tray, also see COYOTE Hi-Count Splice Case (page 2-8).

**Note:** Maximum number of trays per closure and closure capacity for Express versions (8006839 and 8006840) are reduced by 50 percent.