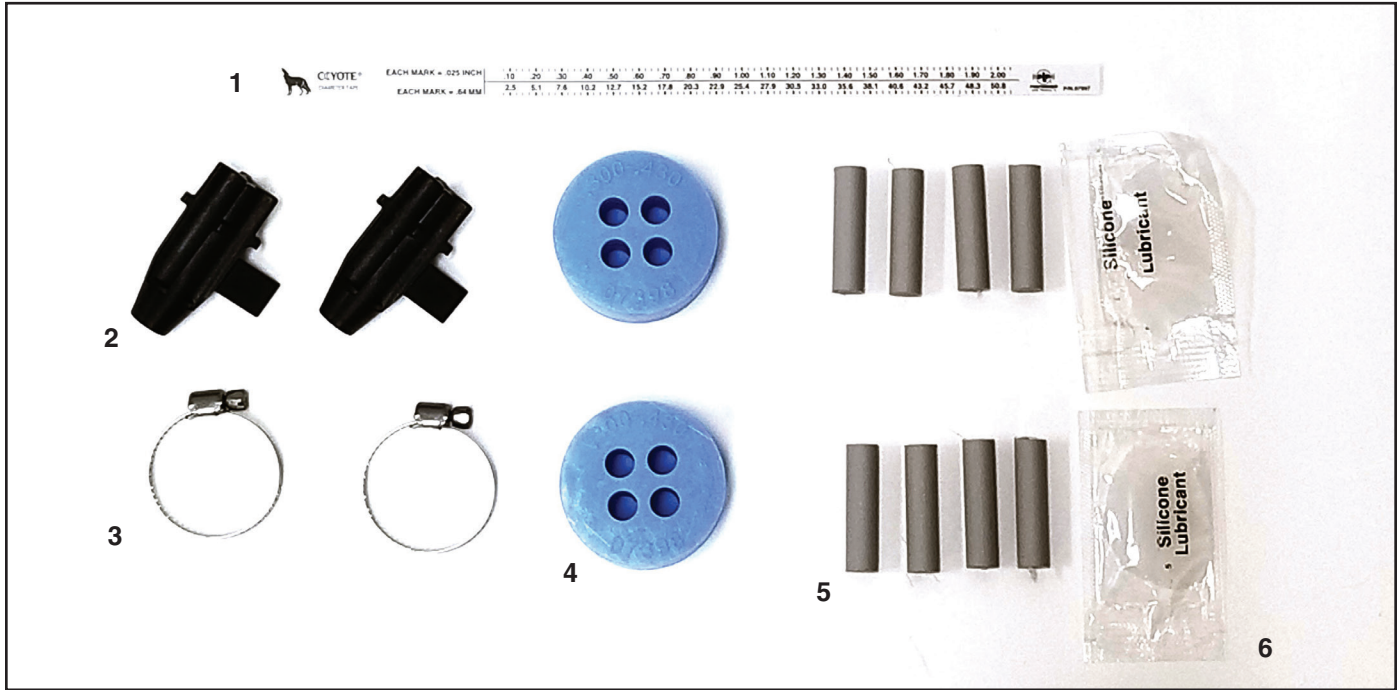




COYOTE® LCC 4 Port Bobbin and Grommet Kit

Be sure to read and completely understand this procedure before applying product. Be sure to select the proper PREFORMED™ product before application.



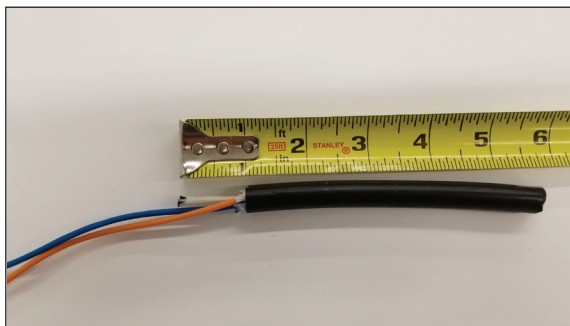
NOMENCLATURE

1. Cable Measure Tape (1)
2. 4 Port Bobbin (2)
3. Hose Clamp (2)
4. Cable Grommet (2)
5. Cable Grommet Plug (8)
6. Silicone Lubricant (2 five gram packets)

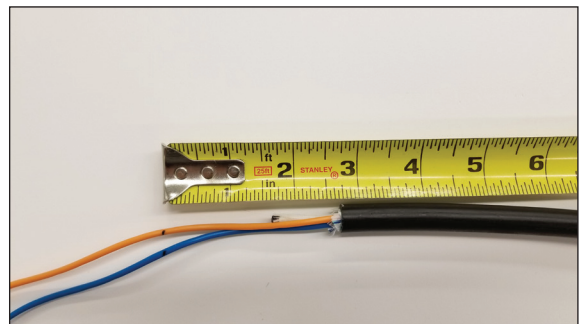
Tools Required:

- 1/4" Nut Driver

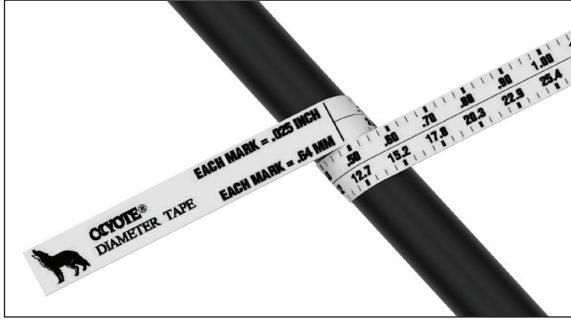
Step #1 Trim the strength members of the cables to 1".



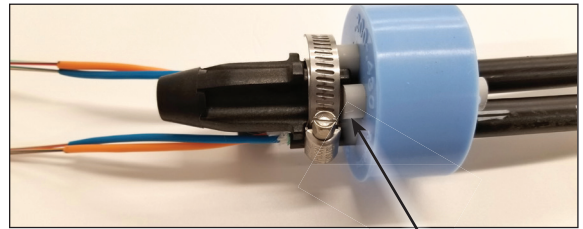
Step #2 Mark and remove the buffer tube at 2-3/4".



Step #3 Measure the cable to determine the diameter and hole location to use in the grommet.

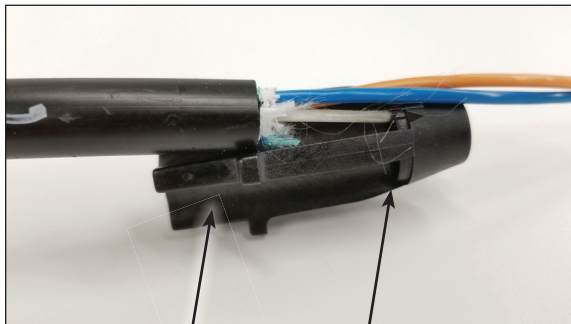


Step #6 Insert the cable(s) into the grommet. Install the plug(s) into any unused ports.



Plug in the unused port

Step #4 Place the end(s) of the strength member(s) in the retention pocket of the bobbin.



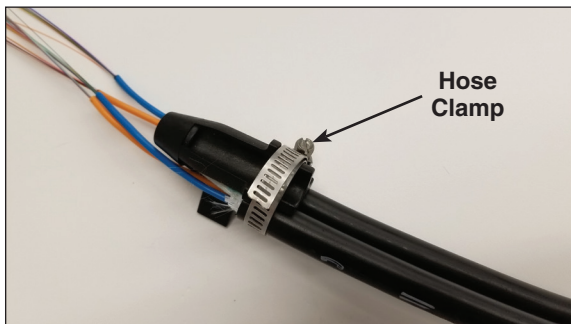
Bobbin

Retention Pocket

Step #7 Apply a thin layer of silicone lubricant to the outer surface of the grommet.

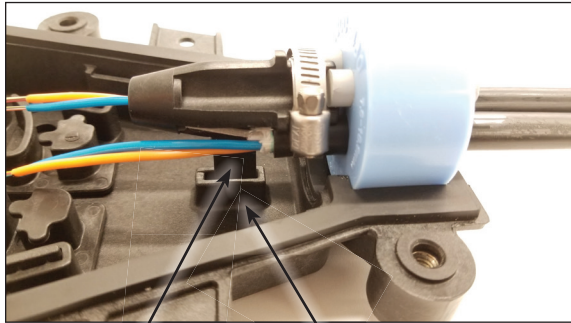


Step #5 Secure the cable(s) to the bobbin with the hose clamp.



Hose Clamp

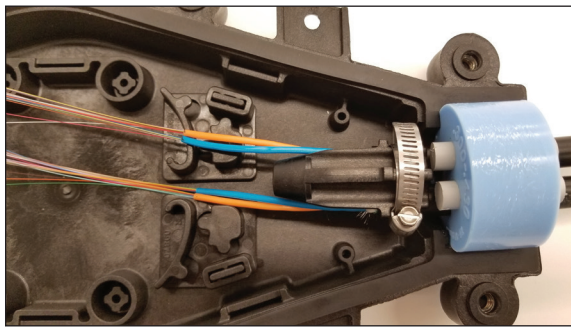
Step #8 Align the leg of the bobbin with the channel in the base.



Bobbin Leg

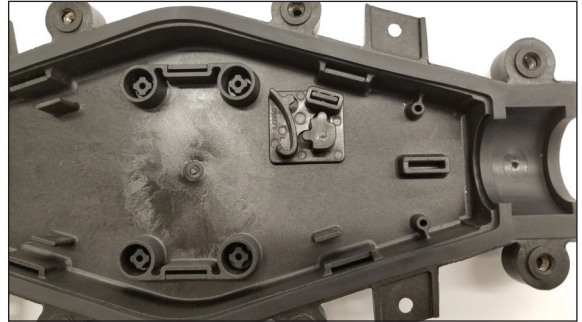
Base Channel

Step #9 Push down, making sure the bobbin leg is fully seated in the channel.

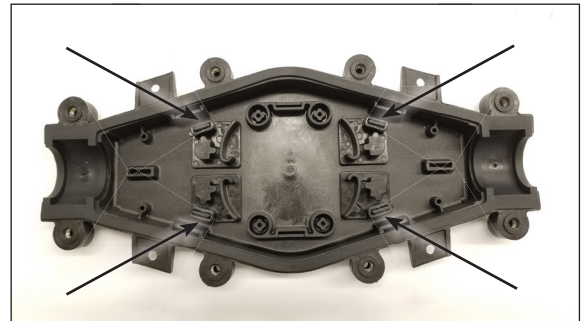


INSTALLATION OF ROUTING CLIPS

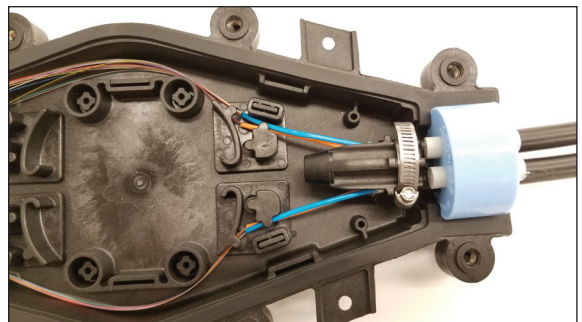
Step #10 Push routing clip onto posts. There are 4 posts and 4 clips.



Orientation after installation of all clips.



Step #11 Position the buffer tubes under the finger in the fiber routing clips.



SAFETY CONSIDERATIONS

This application procedure is not intended to supersede any company construction or safety standards. This procedure is offered only to illustrate safe application for the individual.

FAILURE TO FOLLOW THESE PROCEDURES MAY RESULT IN PERSONAL INJURY OR DEATH.

Do not modify this product under any circumstances.

This product is intended for use by trained technicians only. **This product should not be used by anyone who is not familiar with, and not trained to use it.**

When working in the area of energized lines, extra care should be taken to prevent accidental electrical contact. Be sure to wear proper safety equipment per your company protocol.

For proper performance and personal safety, be sure to select the proper size PREFORMED™ product before application.

PREFORMED products are precision devices. To ensure proper performance, they should be stored in cartons under cover and handled carefully.



PREFORMED LINE PRODUCTS

P.O. Box 91129, Cleveland, Ohio 44101 • 440.461.5200 • preformed.com • email: inquiries@preformed.com
SP3492