

STRING HARDWARE ASSEMBLIES

PLP String Hardware Assemblies include a full range of hardware solutions for tangent suspension, angled suspension, or Dead-End assemblies. Each component in the standard assembly packages was carefully selected to ensure proper fitment and optimal performance. All components arrive at the job site in project-specific, weather-resistant packaging to help expedite identification and installation.

FEATURES AND BENEFITS

- Standard assemblies can be rated up to 500 kV, depending on design and component selection
- All parts are packaged together in weather-resistant creates per customer specifications
- Packaged and marked by string or structure type, facilitating identification and installation
- Customized string assembly configurations and designs are available. Contact PLP for modification requests or customized packages.

NOTE: The catalog numbers provided represent commonly used string configurations only and do not represent final string designs.

IMPORTANT NOTES

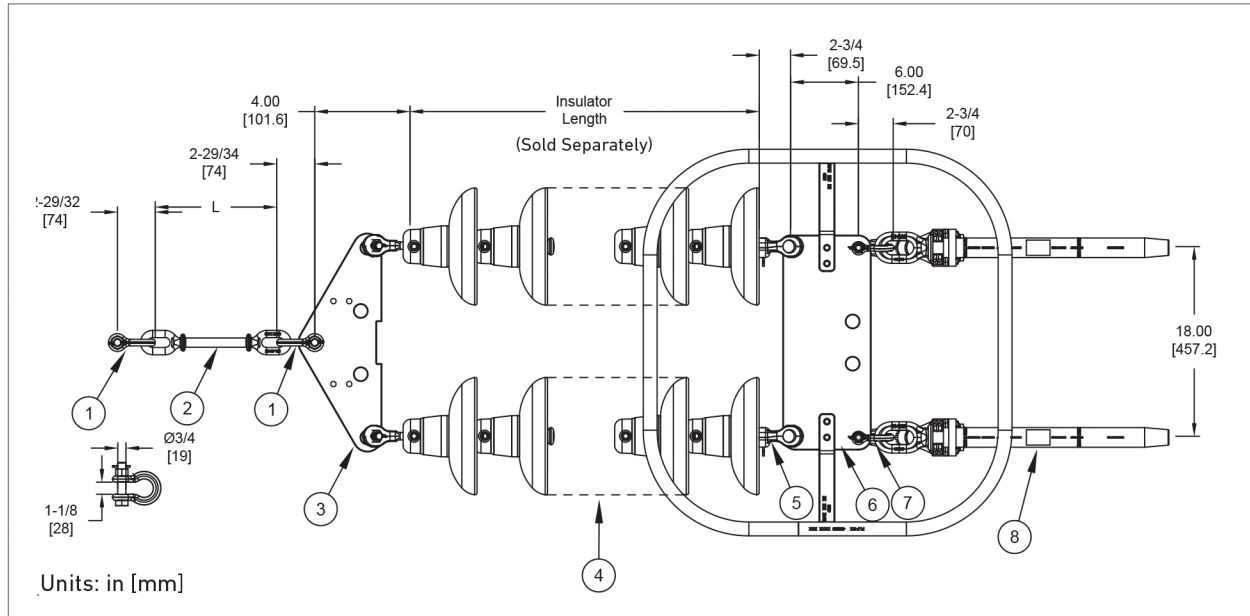
STRING HARDWARE ASSEMBLIES

1. Catalog numbers for assemblies are provided as design examples only. Specific assembly designs and part numbers will be configured per customer specifications. Please contact PLP Technical Support for project-specific part numbers.
2. All galvanizing has been performed per ASTM A153.
3. Parts with length "L" are variable length and dependent on the string design and line parameters.
4. Suspension clamps and associated hardware will be specified on a per-application basis. Please see the Suspension and Support section of the Transmission Catalog for AGS / CGS / Bolted Clamp and Armor options.
5. Compression Dead-End Assemblies and associated hardware to be specified on a per-application basis. Please see the Compression Dead-End section of the Transmission Catalog of ACSR / ACSS / ACCC configurations.
6. Corona rings, when required, are packaged separately to avoid damage.
7. Please see the individual component drawings for detailed dimensions and material properties of parts.
8. For bundle spacings differing from examples shown, please contact PLP.

DEAD-END ASSEMBLY

Twin-Bundle Conductor, Single Insulator, 30 K

Catalog Number: D-IX-22-30



ALL DIMENSIONS ARE APPROXIMATE AND MAY VARY PER FACTORY TOLERANCES. CONTACT PLP FOR MORE INFORMATION.

Bill of Materials

Symbol	Part Number	Description	Qty	Material	Weight (ea)	UBS
					lb (kg)	lb
1	AS-60BNK	Anchor Shackle	2	Galvanized Steel	3.0 (1.4)	60,000
2	EEL-60-L	Eye-Eye Link ("L")	1	Galvanized Steel	Variable	60,000
3	YPD-69107	Yoke Plate, Delta, 60K (APEX Hole)	1	Ductile Iron	20.8 (9.4)	60,000
4	Supplied By Other	Insulator String	2	—	—	—
5	SYC-30	Socket Y-Clevis	2	Ductile Iron	2.5 (1.1)	30,000
6	YPD-65606	Yoke Plate, Delta, 30 K (APEX Hole)	1	Ductile Iron	29 (13.2)	30,000
7	AS-30BNK	Anchor Shackle	2	Galvanized Steel	1.1 (0.5)	30,000
8	See Note 4 on Page 9	Compression Dead-End Jumper Assembly	2	Galvanized Steel and Aluminum	—	95% Tension