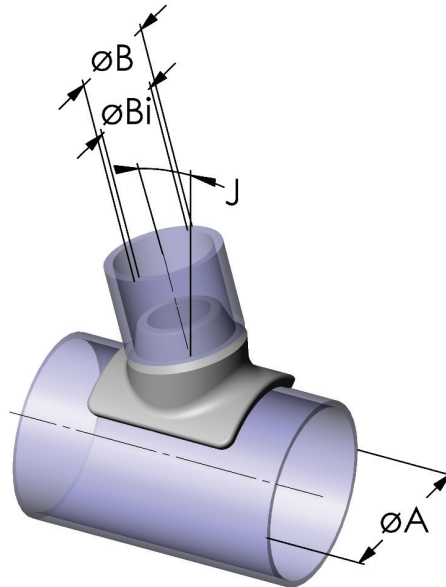


Al-Angle welded coupler

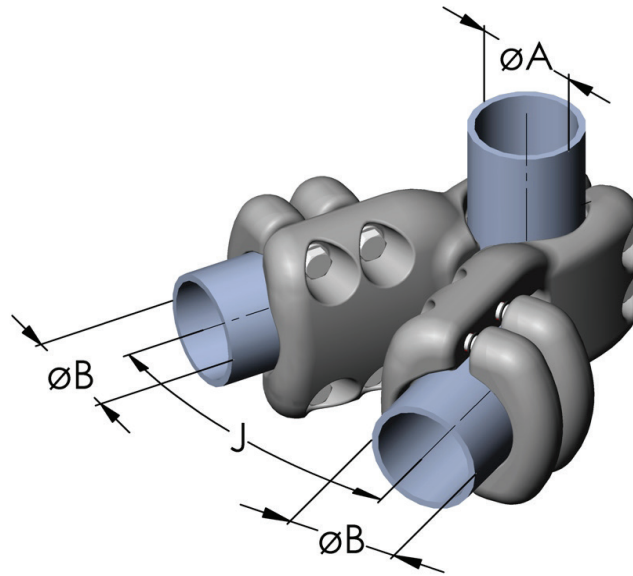
A-Frame bottom



Catalog Number	Voltage	ØA *	Covers A	Flat Terminal	E
W11W-060	420 kV	60.3	60.3	-	80°
W11W-086	420 kV	88.9	60.3	-	80°
W11W-088	420 kV	88.9	88.9	-	80°
W11W-100	245 kV	100	63	47	15°
W11W-101	420 kV	100	100	90	15°
W11W-138	550 kV	141.3	88.9	77.94	15°
W11W-139	550 kV	141.3	88.9	77.94	10°
W11W-148	420 kV	141.3	88.9	-	80°
W11W-160	420 kV	160	100	90	15°

*Dimensions are in millimeters. Please specify exact diameter in case of order.

Al-Angle Duplex/single connector

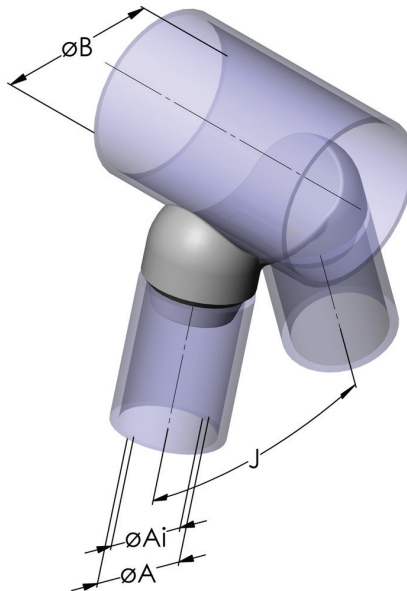


Catalog Number	Voltage	ØA *	Screwpairs A	ØB *	Covers B	Angle J
W21K-100	420 kV	100	2	100	2	30°
W21K-101	420 kV	100	1	100	1	30°
W21K-120	420 kV	120-125	2	120-125	2	30°
W21K-128	420 kV	80	2	120	2	30°
W21K-160	420 kV	160	1	100	1	30°
W21K-168	420 kV	100	2	168	2	30°
W21K-172	420 kV	120	2	170	2	30°
W21K-203	420 kV	120	2	200	1	30°
W21K-220	420 kV	100	2	220	2	30°
W21K-250	550 kV	120	2	250	2	30°

*Dimensions are in millimeters. Please specify exact diameter in case of order.

AI-Angle welded coupler

A-Frame top



Catalog Number	Voltage	ØA *	ØAi *	ØB *	Angle J
W21W-086	420 kV	60.3	-	88.9	20°
W21W-088	420 kV	88.9	-	88.9	20°
W21W-101	420 kV	100	90	100	30°
W21W-138	550 kV	88.9	77.9	141.3	30°
W21W-139	550 kV	88.9	77.9	141.3	20°
W21W-148	420 kV	88.9	-	141.3	20°
W21W-160	420 kV	100	90	160	30°

*Dimensions are in millimeters. Please specify exact diameter in case of order.