

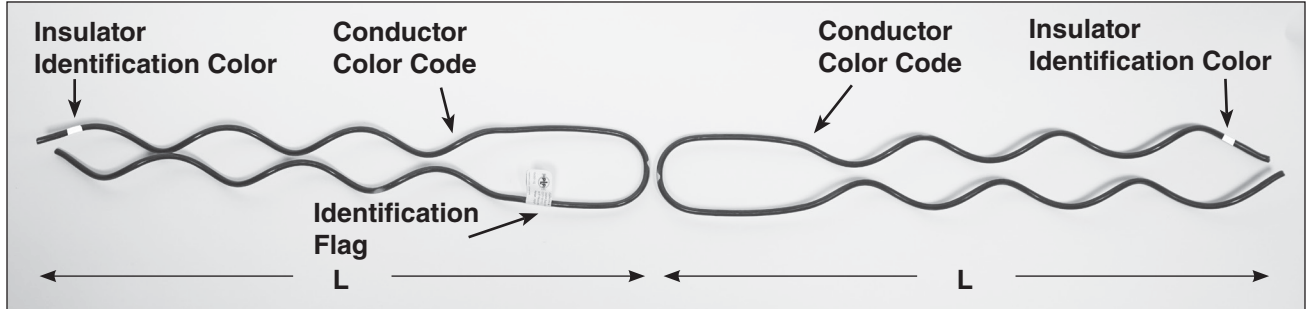


Coated Double Top Tie

for use with covered conductor in top groove, double insulator applications

Be sure to read and completely understand this procedure before applying product.

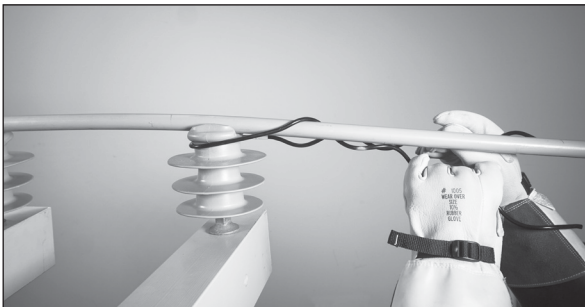
Be sure to select the proper size PREFORMED™ product before application.



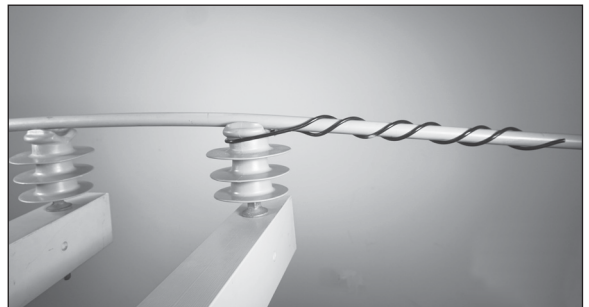
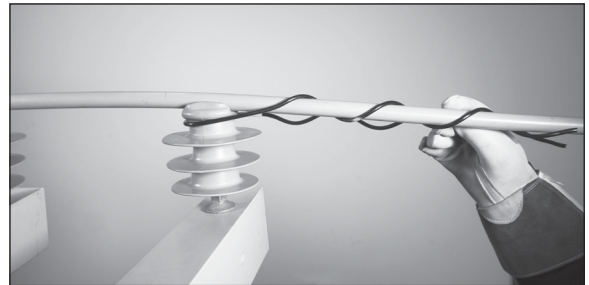
Step #1 Place the first half of the Coated Double Top Tie around the neck of the first insulator with the legs extending away from the second insulator.



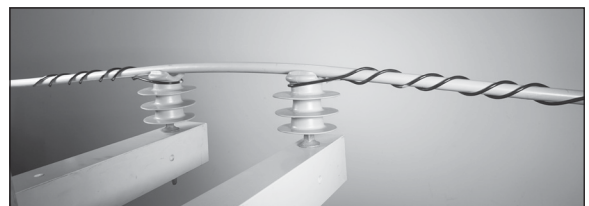
Step #2 Make sure the tie loop is tight around the insulator neck and begin wrapping the legs on at the crossover mark. Wrap the legs around the conductor in a left hand or counterclockwise direction.



Step #3 Continue to wrap the legs onto the conductor. Snap the leg ends into place with slight thumb pressure.



Step #4 Repeat Step#1-#3 for the second half of the Coated Double Top Tie.



Completed Application

Hot Stick Application

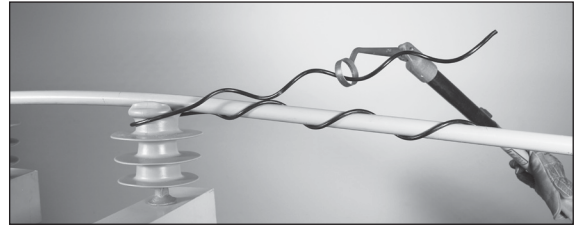
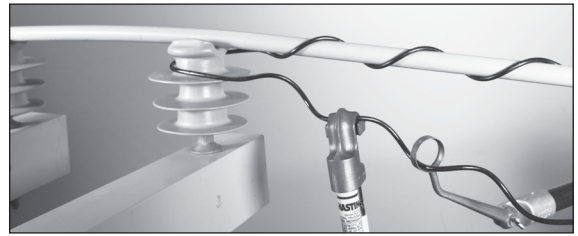
Step #1 Grasp one leg of the first half of the Coated Double Top Tie with the jumper holding stick and position around the head of the first insulator with legs extending away from the second insulator. **NOTE:** Make sure that the Tie Loop is tight on the Insulator Neck.



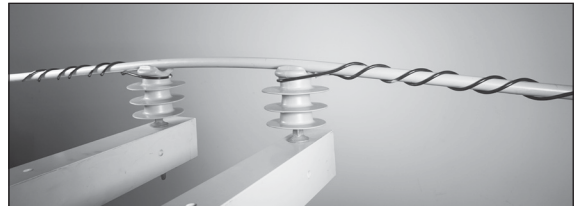
Step #2 Begin wrapping the legs at the crossover mark.



Step #3 Continue wrapping the legs around the conductor. Make sure to snap the leg ends into place with the Applicator Ring Tool or other hot stick tool, as shown below.



Step #4 Follow these same instructions for the second half of the tie. Note that the two tie halves are identical. Make sure that the tie loop is tight on the insulator neck.



Completed Application

SAFETY CONSIDERATIONS

This application procedure is not intended to supersede any company construction or safety standards. This procedure is offered only to illustrate safe application for the individual.

FAILURE TO FOLLOW THESE PROCEDURES MAY RESULT IN PERSONAL INJURY OR DEATH.

This product is intended for a single (one time) use and for the specified application.

Do not reuse or modify this product under any circumstances.

This product is intended for use by trained technicians only. **This product should not be used by anyone who is not familiar with, and not trained to use it.**

When working in the area of energized lines, extra care should be taken to prevent accidental electrical contact.

Be sure to wear proper safety equipment per your company protocol.

For proper performance and personal safety, be sure to select the proper size PREFORMED™ product before application.

PREFORMED products are precision devices. To ensure proper performance, they should be stored in cartons under cover and handled carefully.



PREFORMED LINE PRODUCTS

P.O. Box 91129, Cleveland, Ohio 44101 • 440.461.5200 • preformed.com • email: inquiries@preformed.com

SP3588