



P&P PREFORMED LINE PRODUCTS
The connection you can count on.

ALLOY TIES

For corrosive environments



COMMUNICATIONS



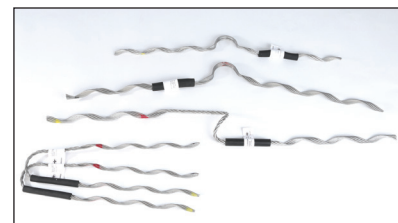
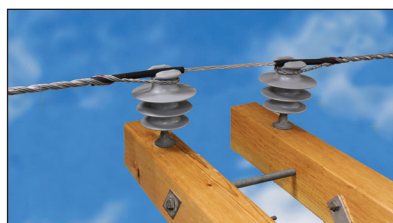
ENERGY

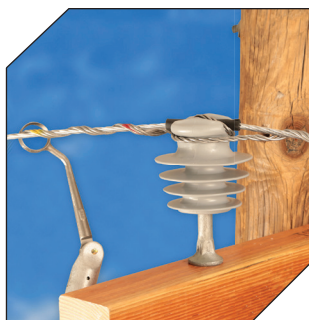


SPECIAL INDUSTRIES



SOLAR





Alloy Top Tie



Alloy Side Tie



Alloy Spool Tie



Global Headquarters
660 Beta Drive
Cleveland, Ohio 44143

Mailing Address:
P.O. Box 91129
Cleveland, Ohio 44101

Telephone: 440.461.5200
Fax: 440.442.8816
Website: preformed.com
Email: inquiries@preformed.com

© 2019 Preformed Line Products
Printed in U.S.A.
EN-SS-1137-2
04.19.IH

PLP Distribution Products

ALLOY TIES: For Corrosive Environments

Description

Preformed Line Products' Alloy Ties are intended for use in corrosive environments on aluminum based conductors. They are suitable for use on ANSI C29 compliant insulators.

Alloy Ties are designed for use in coastal areas. They have been performance-matched to aluminum conductors and have superior corrosive-resistance when compared to standard aluminized steel ties.

Material

Alloy Ties are manufactured from aluminum alloy wire in PLP's Rogers, Arkansas facility. The inner bores of the ties' legs are coated with non-conductive grit.

Mechanical

Testing has shown that Alloy Ties will hold a minimum of 700 lbs. of unbalanced load. The entire line of alloy ties adhere to NESC Standards.

Features

- Easily applied by hand or with hot sticks
- Performance matched materials
- Will not damage the conductor during installation
- Conductor application up to 1.24"
- Accommodates line angles 0-40° depending on application
- Resiliency built-in to protect the conductor
- Reacts like the conductor under loading

Insulator

To ensure proper fit and performance of the tie, PLP recommends the use of porcelain or polymer insulators having head and neck dimensions that are compliant with ANSI C29.5 and C29.7 specifications.

Alloy Top Ties				
C-Neck	F-Neck	Dia. Range (in) Min.	Dia. Range (in) Max.	Color Code
ALC-1104	ALF-1204	0.316	0.357	Red
ALC-1105	ALF-1205	0.358	0.405	Yellow
ALC-1106	ALF-1206	0.406	0.459	Blue
ALC-1107	ALF-1207	0.460	0.520	Orange
ALC-1108	ALF-1208	0.521	0.588	Red
ALC-1109	ALF-1209	0.589	0.665	Purple
ALC-1110	ALF-1210	0.666	0.755	Brown
ALC-1111	ALF-1211	0.756	0.858	Red

Alloy Side Ties				
C-Neck	F-Neck	Dia. Range (in) Min.	Dia. Range (in) Max.	Color Code
ASC-5104	ASF-5204	0.316	0.357	Red
ASC-5105	ASF-5205	0.358	0.405	Yellow
ASC-5106	ASF-5206	0.406	0.459	Blue
ASC-5107	ASF-5207	0.460	0.520	Orange
ASC-5108	ASF-5208	0.521	0.588	Red
ASC-5109	ASF-5209	0.589	0.665	Purple
ASC-5110	ASF-5210	0.666	0.755	Brown
ASC-5111	ASF-5211	0.756	0.858	Red

Double Support Ties			
Double Support Ties, C or F Neck	Dia. Range (in) Min.	Dia. Range (in) Max.	Color Code
DST-0152	0.316	0.357	Red
DST-0153	0.358	0.405	Yellow
DST-0154	0.406	0.459	Blue
DST-0155	0.460	0.520	Orange
DST-0156	0.521	0.588	Red
DST-0157	0.589	0.665	Purple
DST-0158	0.666	0.755	Brown
DST-0159	0.756	0.858	Red

Alloy Spool Ties			
Spool Ties	Dia. Range (in) Min.	Dia. Range (in) Max.	Color Code
ASP-4304	0.316	0.357	Red
ASP-4305	0.358	0.405	Yellow
ASP-4306	0.406	0.459	Blue
ASP-4307	0.460	0.520	Orange
ASP-4308	0.521	0.588	Red
ASP-4309	0.589	0.665	Purple
ASP-4310	0.666	0.755	Brown
ASP-4311	0.756	0.858	Red

See the product catalog for the full range of ties. Other sizes are available upon request.