

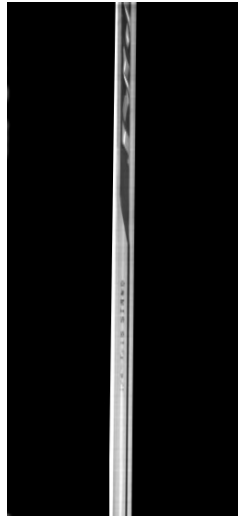


## GUY MARKER – Helical Pig Tail Installation

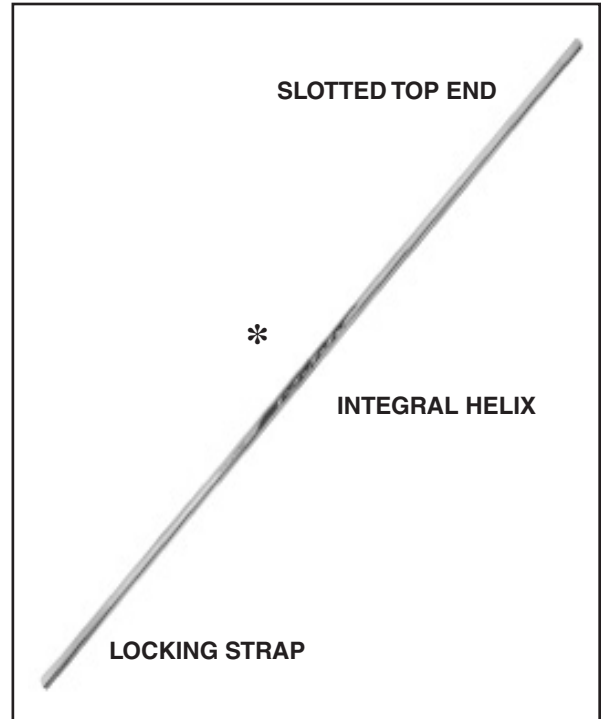
Be sure to read and completely understand this procedure before applying product. Be sure to select the proper PREFORMED product before application.



LOCKING STRAP



SIZE OF STRAND



SLOTTED TOP END

\*

INTEGRAL HELIX

LOCKING STRAP

\* Note: The self-contained helix should be pulled out of the GUY MARKER before starting the application.

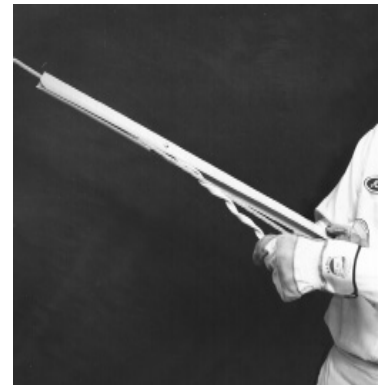
**Step #1** With the slotted top end of the GUY MARKER (see nomenclature) apply pressure against the strand. Make sure the free end of the helix is pointed toward the ground.



**Step #2** Continue to apply pressure and push the GUY MARKER onto the strand as far as the self-contained helix.



**Step #3** Bend the bottom portion of the GUY MARKER slightly to clear the strand and provide “wrap-room” for the helix.



**Step #4** Then, start to wrap on the helix at a convenient height.



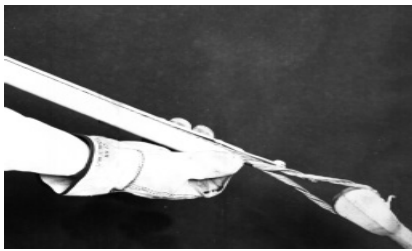
**Step #5** Complete the wrapping of the helix by snapping the end around the strand.



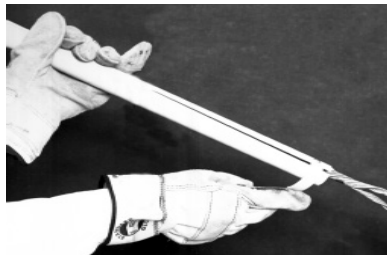
**Step #6** Force the lower portion of the GUY MARKER against the strand as shown.



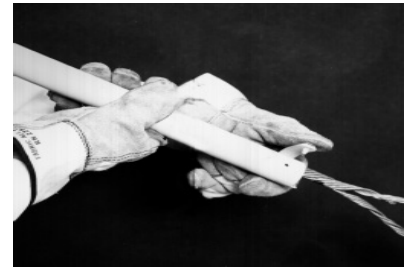
**Step #7** Continue forcing the GUY MARKER until it completely encloses the strand.



**Step #8** Pull the strap from the vertical position to a horizontal position as shown.



**Step #9** Pull the strap around the GUY MARKER, as shown.



**Step #10** Now push the locking strap through the hole.



**Step #11** Complete the application by sliding the GUY MARKER down as far as it will go.



**Step #12** The locking strap, when expanded at the anchor, secures the bottom end and provides a neat symmetrical configuration.



#### SAFETY CONSIDERATIONS

This application procedure is not intended to supersede any company construction or safety standards. This procedure is offered only to illustrate safe application for the individual. **FAILURE TO FOLLOW THESE PROCEDURES MAY RESULT IN PERSONAL INJURY OR DEATH.**

**Do not modify this product under any circumstances.**

This product is intended for use by trained technicians only. **This product should not be used by anyone who is not familiar with and trained in the use of it.**

When working in the area of energized lines with this product, extra care should be taken to prevent accidental electrical contact.

For proper performance and personal safety, be sure to select the proper size PREFORMED product before application.

PREFORMED products are precision devices. To insure proper performance, they should be stored in cartons under cover and handled carefully.



# PREFORMED LINE PRODUCTS