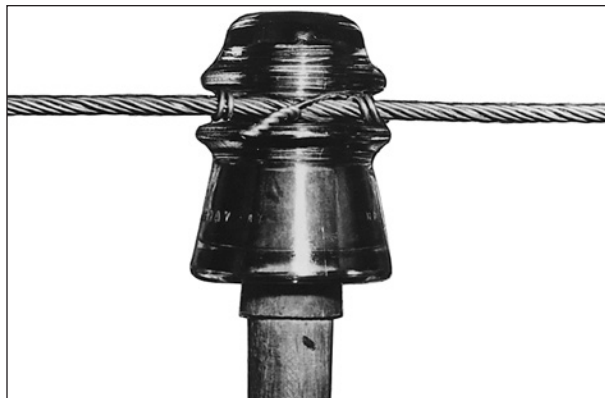




Open Wire Splice

Open Wire Splice

PREFORMED™ Open Wire Splices are used for mid-span splicing during new construction and for repair of abraded or severed wire at tie points. Provides armoring at the tie that is designed to protect the conductor from damaging effects of chafing and fretting. Open Wire Splices wrap on easily by hand without a need for wire cutting. They are designed to permanently restore the full mechanical strength and conductivity of the conductor to which they are applied.



Catalog Number	Wire		Number of Subsets	Length	Color Code	Per Carton	
	Gauge	Size				Units	Wt./Lbs.
Galvanized Steel							
GLS-3101	BWG-12	.109"	3	12"	Black	100	9
GLS-3103	BWG-10	.134"	3	14"	Orange	100	15
Aluminum Clad Steel							
AWLS-5101	AWG-11	.091"-.095"	2	12"	Green	100	7