



**PREFORMED** LINE PRODUCTS  
The connection you can count on.


## POLE PLUG

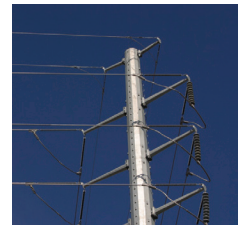
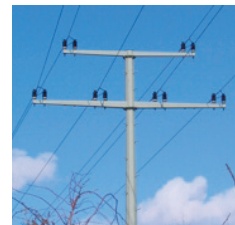


 COMMUNICATIONS

 ENERGY

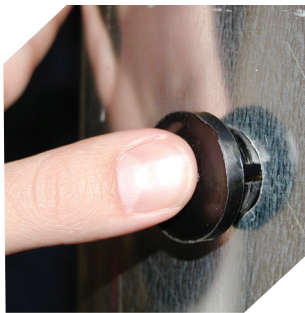
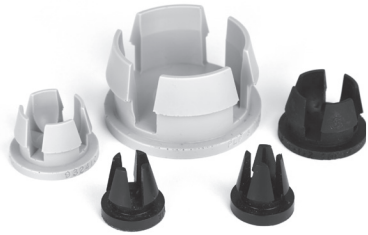
 SPECIAL INDUSTRIES

 SOLAR



## PLP® Distribution Products

### POLE PLUG



#### Description

The POLE PLUG is designed to close existing holes in steel and composite utility poles or other steel equipment in order to reduce or eliminate whistling due to the wind. The plug also provides an economical means of reducing the incidence of insect infestations. This reduces possible injury to linemen and loss of productivity.

- Fully UV stabilized
- Resistant to environmental stress cracking

#### Application

- Installs in seconds
- Can be installed with standard hot line tools if required
- Positive snap in lock

#### Features

- One piece design
- Lightweight
- Eliminate/reduce pole whistling
- Eliminate/reduce insect infestation



- Covers hole dimensions from 5/16" – 3"
- Long service life without material deterioration
- Compatible with poles and equipment enclosures with wall thickness of 1/4" or less

Pole Plug		
PLP Catalog Number (Black)	PLP Catalog Number (Gray)	Hole Size
PP-0625B	PP-0625G	9/16" and 5/8"
PP-0750B	PP-0750G	3/4" and 11/16"
PP-0813B	PP-0813G	13/16"
PP-0875B	PP-0875G	7/8" and 15/16"
PP-1000B	PP-1000G	1"
PP-1125B	PP-1125G	1-1/8"
PP-1250B	PP-1250G	1-1/4"
PP-1375B	PP-1375G	1-3/8"
PP-1500B	PP-1500G	1-1/2"
PP-3000B	PP-3000G	3"



World Headquarters  
660 Beta Drive  
Cleveland, Ohio 44143

Mailing Address:  
P.O. Box 91129  
Cleveland, Ohio 44101

Telephone: 440.461.5200  
Fax: 440.442.8816  
Web Site: [www.preformed.com](http://www.preformed.com)  
E-mail: [inquiries@preformed.com](mailto:inquiries@preformed.com)

© 2016 Preformed Line Products  
Printed in U.S.A.  
EN-SS-1072-4  
05.16.IH