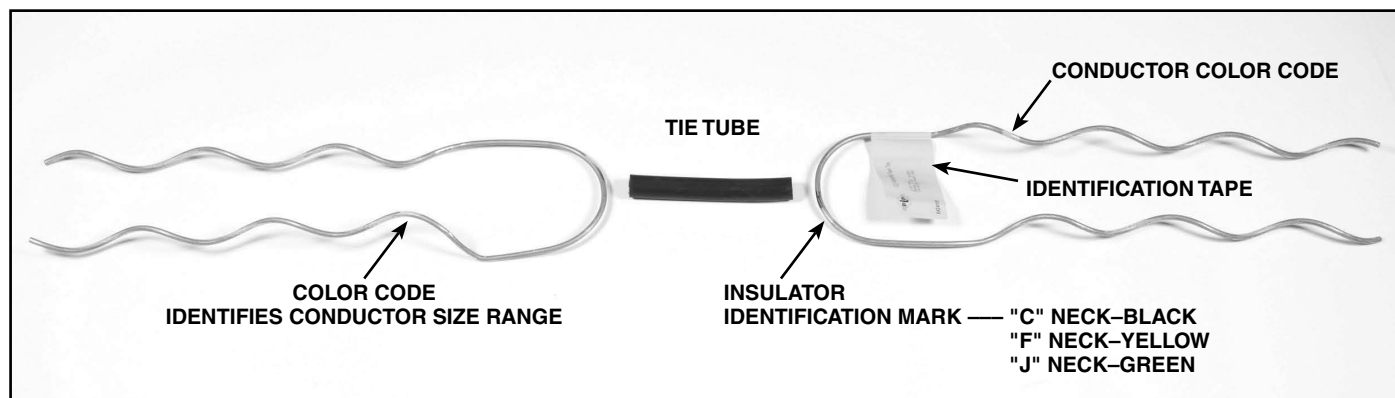


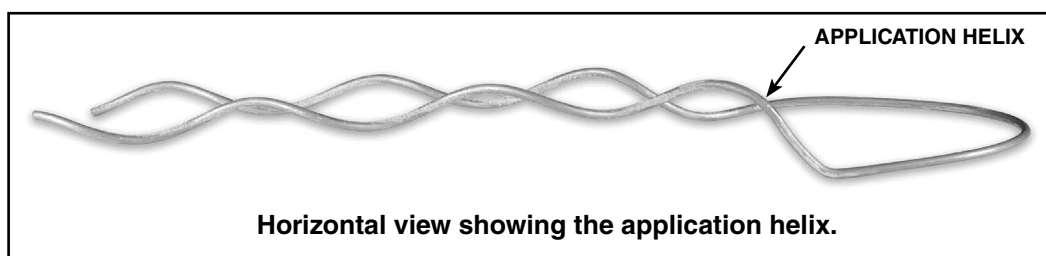


EZ-WRAP® Twin Tie for Insulator Top Groove

Be sure to read and completely understand this procedure before applying product. Be sure to select the proper PREFORMED™ product before application.

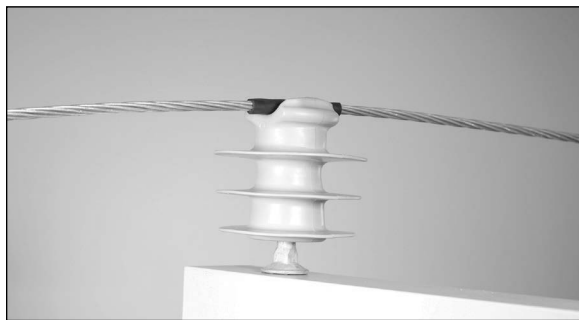


EZ-WRAP Twin Tie as received in the field.



HAND APPLICATION

STEP #1 Apply the tie tube to the conductor so that the conductor does not come into direct contact with the insulator. Make sure that the slit in the tube faces up and away from the insulator groove.



STEP #2 With the application helix in the upright position, install half of the Twin Tie around the neck of the insulator. Slide it parallel to the conductor until the loop of the tie rests against the neck of the insulator.

PLP Tip: Both sections of the Twin Tie are identical, and therefore can be applied in either direction on the conductor and around the insulator.



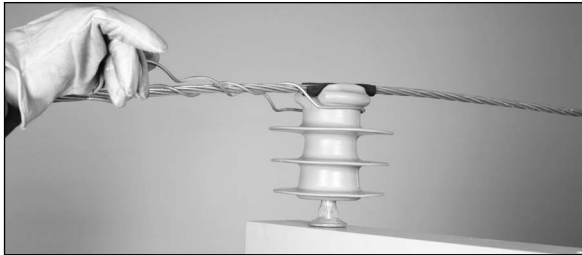
STEP #3 Start to wrap the leg with the application/color code as shown.

PLP Tip: Both sections of the Twin Tie are identical, and therefore can be applied in either direction on the conductor and around the insulator.



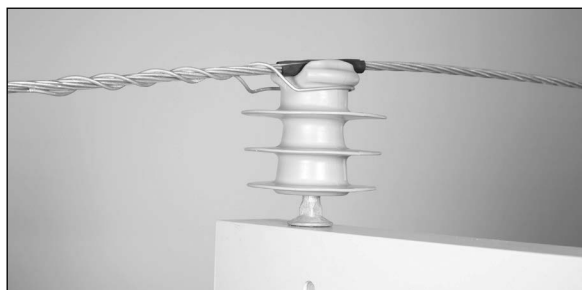
Lift the leg up and over the conductor (it will hook naturally onto the conductor without any pressure).

STEP #4 Continue to apply the first leg to completion. Be sure to snap the end of the leg into position with slight thumb pressure.



STEP #5 Wrap the other leg by going under the conductor as shown and snap the leg into position in the same manner.

CAUTION: Make sure that the tie loop is tight on the insulator neck and under the insulator head.

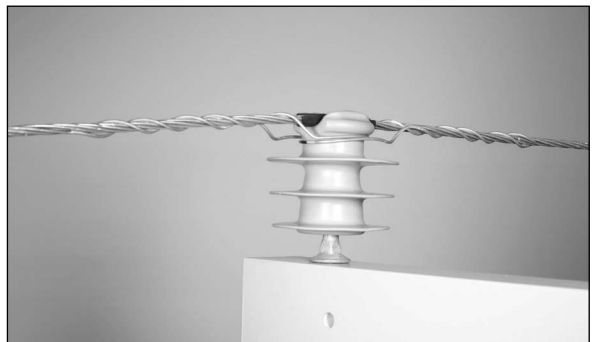


STEP #6 Repeat Steps 2 - 6 to install the other half of the Twin Tie . . .



. . . making sure the legs are snapped into position.

STEP #7 The application is now complete.

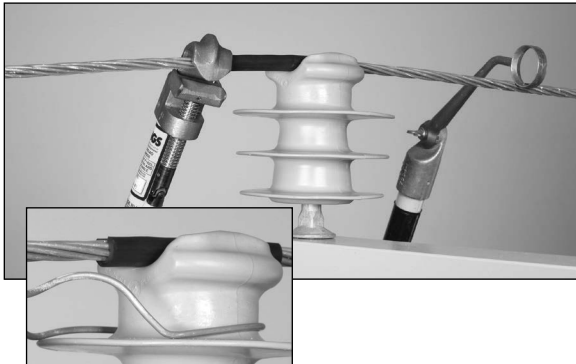


HOT APPLICATION

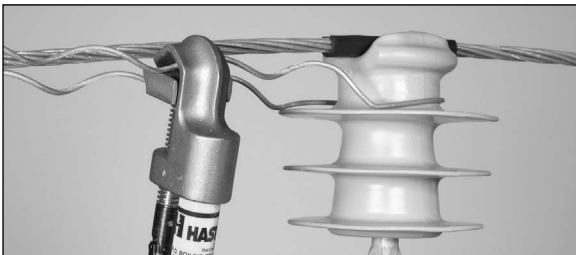
STEP #1 Apply the tie tube so that the conductor does not come into direct contact with the insulator.



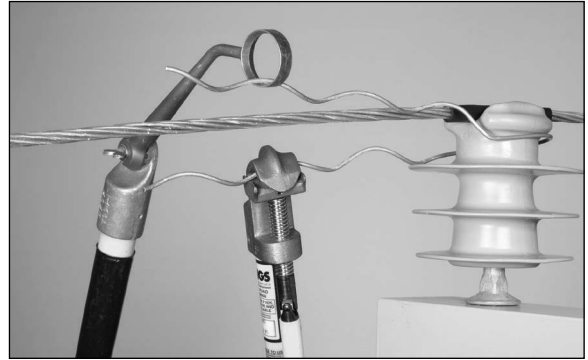
STEP #2 After applying the tube with the hot stick, slide the tube over until it rests evenly in the insulator groove (see inset). You may need to lift the conductor with the aid of another hot stick. Make sure that the slit in the tube faces up and away from the insulator groove.



STEP #3 With the application helix in the upright position, install half of the Twin Tie around the neck of the insulator. Slide it parallel to the conductor until the loop of the Twin Tie rests against the neck of the insulator.



STEP #4 With the PREFORMED™ Applicator Ring, start to wrap the leg marked with the application/color code. Lift the leg up and over the conductor (It will hook naturally onto the conductor without any pressure).



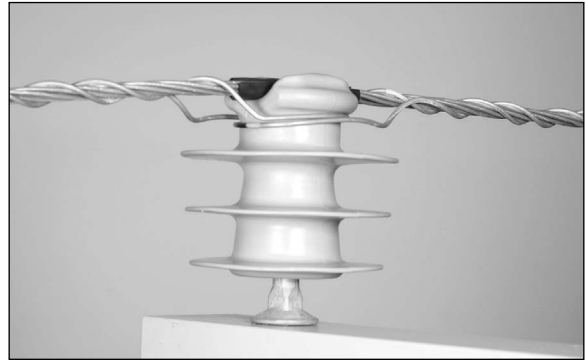
STEP #5 Continue wrapping to completion. Be sure to snap the end of the leg into position.



STEP #6 Wrap the other leg by going under the conductor as shown.



STEP #8 Completed application of the Twin Tie.



STEP #7 Repeat **Steps 3 – 6** to install the other half of the Twin Tie and to complete the installation. Be sure to snap the legs into position.



SAFETY CONSIDERATIONS

This application procedure is not intended to supersede any company construction or safety standards. This procedure is offered only to illustrate safe application for the individual. **FAILURE TO FOLLOW THESE PROCEDURES MAY RESULT IN PERSONAL INJURY OR DEATH.**

Do not modify this product under any circumstances.

This product is intended for use by trained technicians only. **This product should not be used by anyone who is not familiar with, and not trained to use it.**

When working in the area of energized lines, extra care should be taken to prevent accidental electrical contact.

For proper performance and personal safety, be sure to select the proper size PREFORMED™ product before application.

PREFORMED products are precision devices. To insure proper performance, they should be stored in cartons under cover and handled carefully.



PREFORMED LINE PRODUCTS

P.O. Box 91129, Cleveland, Ohio 44101 • 440.461.5200 • www.preformed.com • e-mail: inquiries@preformed.com

SP2825-1