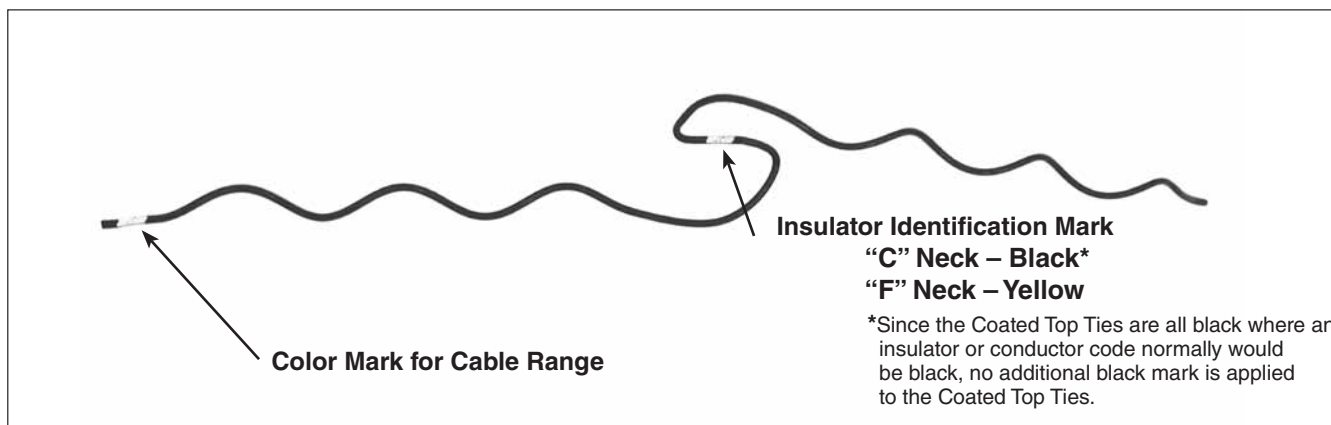




Coated Top Tie

FOR TOP GROOVE, SINGLE INSULATOR INSTALLATIONS ON JACKETED CONDUCTOR

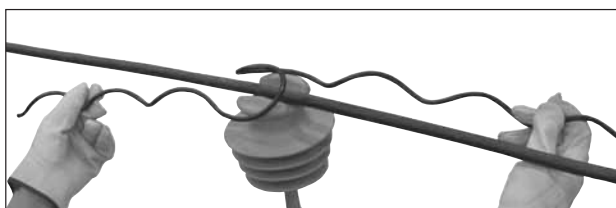
Be sure to read and completely understand this procedure before applying product. Be sure to select the proper PREFORMED™ product before application.



Coated Top Tie as received in the field.

HAND APPLICATION

Step #1 Align the Coated Top Tie with the conductor as shown, so that both legs are parallel to the conductor.



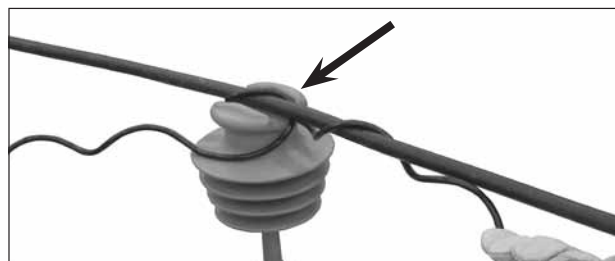
Step #3 Continue to rotate the legs until they are approximately parallel to the conductor as shown.



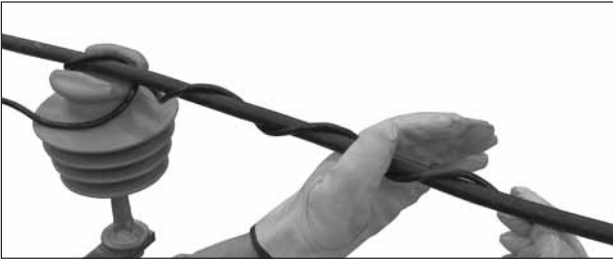
Step #2 Rotate the Coated Top Tie in a clockwise direction. Make sure that both legs go under the conductor as shown. This *must be done* to ensure the conductor is secured to the insulator.



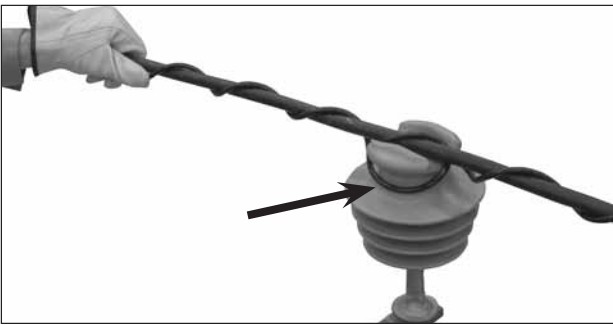
Step #4 Start to wrap one leg of the Coated Top Tie under the conductor as shown. Install the leg closest to you. *Make sure* tie is firmly seated under the insulator ears (see arrow).



Step #5 Continue to apply the first leg to completion. Make sure to snap the end of the leg into place with slight thumb pressure.



Step #6 Wrap on the other leg of the Coated Top Tie as shown. Make sure to snap the end of the leg into place. **MAKE SURE TIE LOOP IS TIGHT ON INSULATOR NECK AND UNDER INSULATOR HEAD** (see arrow).



Step #7 Completed application of the PREFORMED™ Coated Top Tie.

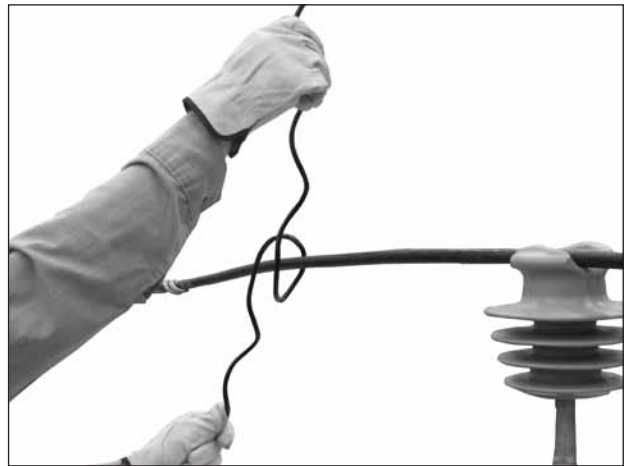


ALTERNATE ROTATION METHOD

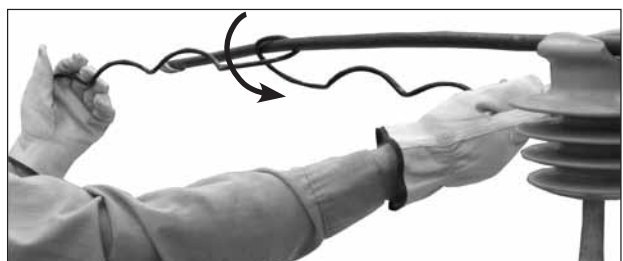
Step #1 Away from the insulator and any obstruction, align the Coated Top Tie with the conductor as shown, so that both legs are parallel to the conductor. This can be done in any plane necessary to avoid obstructions.



Step #2 Rotate the Coated Top Tie as if applying it to the insulator, but, in the vertical plane over and around the conductor so that both legs of the Coated Top Tie pass in front of the conductor.



Step #3 Continue to rotate the legs until they are approximately parallel to the conductor and rotate the tie so the legs are beneath the conductor (horizontal plane). The conductor should pass through the tie's center section as shown.



Step #4 Slide the Coated Top Tie toward the insulator, lifting the conductor slightly so the loop of the tie can slide over the insulator head as shown.



Step #5 Once the tie is centered over the insulator, lower the conductor and start to wrap on one leg of the Coated Top Tie as shown. Follow Steps 4 to 7 in the hand application for the other leg.

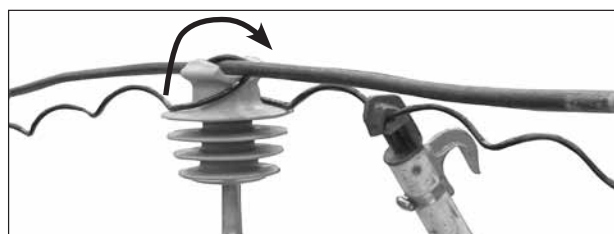


HOT STICK APPLICATION

Step #1 Using a hold stick, position the Coated Top Tie as shown, with both legs parallel to the conductor.



Step #2 Rotate the Coated Top Tie in a clockwise direction. Make sure that both legs swing under the conductor as shown.



Step #3 With the PREFORMED™ Applicator Ring, start to wrap on one leg of the Coated Top Tie. Make sure the tie is firmly seated under insulator ears (see arrow).



Step #4 Continue wrapping to completion. Make sure to snap the end of the leg into place.



Step #5 To apply the second leg, follow the same procedure stated in Step #3 above.



Step #6 Complete the installation by snapping in the end of the final leg.
MAKE SURE TIE LOOP IS TIGHT ON INSULATOR NECK AND UNDER INSULATOR HEAD (see arrow).



Step #7 Completed application of the PREFORMED™ Coated Top Tie.



SAFETY CONSIDERATIONS

This application procedure is not intended to supersede any company construction or safety standards. This procedure is offered only to illustrate safe application for the individual.

FAILURE TO FOLLOW THESE PROCEDURES MAY RESULT IN PERSONAL INJURY OR DEATH.

This product is intended for a single (one-time) use and for the specified application. **DO NOT REUSE OR MODIFY THIS PRODUCT UNDER ANY CIRCUMSTANCES.**

This product is intended for use by trained technicians only. **This product should not be used by anyone who is not familiar with, and trained in the use of it.**

When working in the area of energized lines with this product, extra care should be taken to prevent accidental electrical contact.

For proper performance and personal safety, be sure to select the proper size PREFORMED™ product before application.

PREFORMED products are precision devices. To insure proper performance, they should be stored in cartons under cover and handled carefully.



PREFORMED LINE PRODUCTS

P.O. Box 91129, Cleveland, Ohio 44101 • 440.461.5200 • www.preformed.com • e-mail: inquiries@preformed.com

SP3101-3