



FIBERLIGN®

Fiber Network Solutions
for Power Utilities – OPGW

Asia Pacific Region

The connection you can count on

FIBERLIGN® Product Solutions



Optical Ground Wire (OPGW) performs an important role in today's transmission networks, firstly as an electrical ground wire and secondly to provide reliable data transmission pathways from the fibre optics embedded within the core of the conductor.

PLP protects the world's most critical connections by creating stronger and more reliable networks. Our precision-engineered solutions for OPGW are trusted by energy and communication providers worldwide to perform better and last longer.

FIBERLIGN® OPGW Product Range

COYOTE® OPGW CRB Closures



The COYOTE® Dome Closure with Cable Restraint Bracket System (CRB) features a robust modular design that seals, secures, stores and protects the OPGW splice.

The CRB system secures the OPGW cable for superior retention and torque resistance. The CRB range can accommodate up to 288 fibres and six OPGW, ADSS and underground cable entries.

FIBERLIGN® Cushion Clamps for OPGW



The FIBERLIGN® Downlead Cushion Clamps secure OPGW and ADSS cable downleads to structures while minimising compressive clamping forces that could transfer to the optical elements.

COYOTE® OPGW CSL Closures



The COYOTE® CSL Closure Splice Case with stainless steel shell features a versatile and convenient fibre management system.

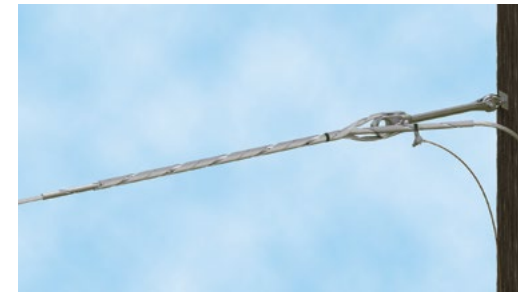
The case maintains an airtight and watertight seal around all types of fibre optic cable and mounting brackets. The splice case is suitable for overhead installation on wood, concrete and steel poles as well as transmission towers.

FIBERLIGN® Pole Hardware



PLP offers an extensive range of pole hardware and fittings for OPGW to attach PLP FIBERLIGN® dead-ends and suspension systems onto wood, concrete and steel poles and towers.

FIBERLIGN® Formed Wire Dead-end



The FIBERLIGN® Formed Wire Dead-end has two spiral shaped wires comprising a structural rod on the inner layer and a dead-end component on the outer layer.

The formed wire inner and outer layer materials are designed to transfer axial tensile loads and distribute radial compressive forces that are in contact with OPGW and to reduce the stress on the central core and internal optical fibres.

FIBERLIGN® OPGW Suspension Systems

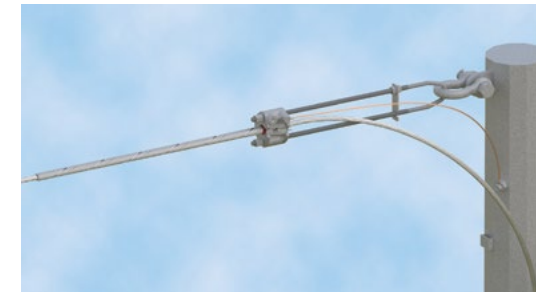


FIBERLIGN® Suspension Systems for OPGW provide superior cable and fibre protection at the point of suspension.

The combination of structural reinforced rods, outer rods, boltless housing and resilient inserts reduces compression, clamping and bending stresses on the cable.

Available as a left or right hand lay including structural rods, outer rods, integrated earth bonding and current transfer tab.

FIBERLIGN® OPGW Dead-ends

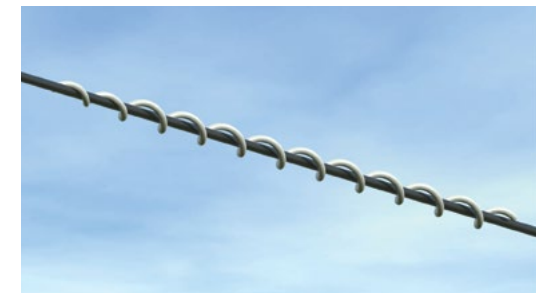


FIBERLIGN® Dead-ends are specifically designed to terminate OPGW and minimise any compression stress that may be transferred to the core optical elements within.

The U-Bolt design allows for tension adjustment and extra clearance distance without the need for external hardware such as a turnbuckle or extension links.

Available in left or right hand lay including retaining rods, wedge and housing, earth bonding point and sag adjustment.

FIBERLIGN® Spiral Vibration Damper



The FIBERLIGN® Spiral Vibration Damper reduces levels of Aeolian vibration on OPGW cables without the need to calculate precise positioning.

The vibration damper is a formed spiral section that contacts the cable to dissipate and lessen the vibration wave.

Telecommunications and fibre optics remains an important product offering for Preformed Line Products globally.

Whether for Fibre to the Home (FTTH) network, 5G backhaul, renewable generation or a utility automation project, PLP has an extensive range of aerial and below ground fibre management and delivery solutions for every application.

PLP is the world leader with its FIBERLIGN® range of hardware and fittings for ADSS cable and OPGW applications. The range includes terminations, suspension systems and vibration management products.

Combine the telecom range with our extensive pole and tower product range and PLP can supply an end-to-end solution for any project.

PLP Asia Pacific Regional Office Locations

PLP Australia

190 Power Street
Glendenning NSW 2761
Australia
Ph: +61 2 8805 0000
Fax: +61 2 8805 0090
Email: sales@preformed.com.au
www.plp.com/au

PLP New Zealand

35 Lady Ruby Drive
East Tamaki, Manukau, Auckland 2013
New Zealand
Ph: +64 9 274 2000
Fax: +64 9 274 2001
Email: mail@preformed.co.nz
www.preformed.co.nz

PLP Vietnam

No. 9A, Street 53, Zone 5
Tan Phong Ward
District 7, Ho Chi Minh City
Vietnam
Ph: +84 28 3939 3927
Fax: +84 28 3824 3929
Email: sales@preformed.asia
www.plp.com/th

PLP China

No. 1 Guohuai Jie Development Zone
Liangxiang, Beijing 102488
China PRC
Ph: +86 10 8936 0860
Fax: +86 10 8936 0866
Email: plp@plp.com.cn
www.plp.com.cn

PLP Malaysia

No. 3, Jalan BK 1/11
Kinrara Industrial Park
Bandar Kinrara
47100 Puchong
Selangor Darul Ehsan
Malaysia
Ph: +60 3 807 65922
Fax: +60 3 807 64922
Email: my.sales@preformed.asia
www.preformed.asia/Malaysia

PLP Indonesia

Jl. Irian VII Blok MM-4-2
Kawasan Industri MM2100
Cikarang - Bekasi 17520
Jawa Barat
Indonesia
Ph: +62 21 8593 3899
Fax: +62 21 893 4964
Email: id.sales@preformed.com
www.preformed.asia/Indonesia

PLP Thailand

296 Moo 4, Ladkrabang
Industrial Estate, EPZ 3
Chalongkrung Road, Lamplatew
Ladkrabang, Bangkok 10520
Thailand
Ph: +66 2 739 4026
Fax: +66 2 326 0564
Email: sales@preformed.asia
www.plp.com/th

