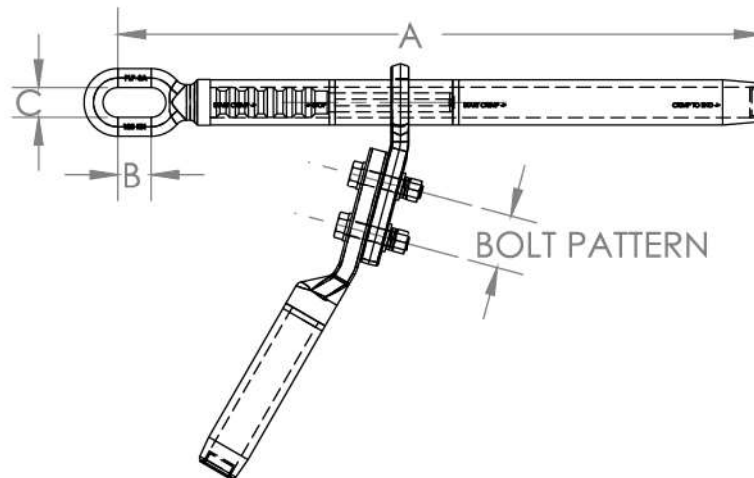


## Compression Dead-Ends for ACSR



### DIMENSIONS

CATALOGUE NO.	CONDUCTOR	STEEL DIE	ALUMINIUM DIE	A mm	B mm	C mm	PALM BOLT PATTERN
CFDE-432-MNK	Mink	-	DA-6	434	26	22	2 x 45
CFDE-557-HRE	Hare	DS-7	DA-7	474	26	22	2 x 45
CFDE-713-WLF	Wolf	DS-8	DA-8	460	26	22	2 x 45
CFDE-743-CKD	Chicadee	DS-8	DA-8	460	26	22	2 x 45
CFDE-815-PCN	Pelican	DS-8	DA-9	505	26	22	2 x 45
CFDE-923-BER	Bear	DS-10	DA-9	543	28	25	2 x 45
CFDE-941-KNB	Kingbird	DS-8	DA-9	543	28	25	2 x 45
CFDE-1064-TRN	Tem	DS-8	DA-11	553	28	25	3 x 45
CFDE-1127-ZBR	Zebra	DS-10	DA-11	585	36	30	3 x 45
CFDE-1165-RAL	Rail	DS-10	DA-11	583	28	25	3 x 45
CFDE-1400-BRT	Bersfort	DS-10	DA-13	620	36	30	4 x 45

Materials: The steel insert is drop forged and galvanized.

Compression tube, palm and jumper are aluminium and fasteners are all High Tensile Grade 8.8 HDG steel.

A clevis steel insert is also available on request.

All compression and jumper lug tubes are pre-greased and sealed with a plastic cap.

All compression fittings are tested in accordance with IEC 61284: Heat cycle and tensile.