

Super Post™ Installation Guidelines

(with optional 6" Lockin' Pocket™ Flashing)

Installing the Super Post on a flat commercial roof

Super Posts must be secured to structural members of the roof such as I-beams or filler beams using appropriate structural fasteners for the specific installation. Please consult a local engineer or fastener manufacturer for additional guidance as needed for your particular installation.

These guidelines begin after the structural members have been located and marked for each Super Post to be installed. For questions about layout see *Power Rail™ Design Guidelines*.

Each Super Post kit includes the following items. If any items are missing, call us toll free at 800-260-3792.

Qty	Description
1	Super Post
1	6" Lockin' Pocket Flashing with recommended LPS sealer and Weather-Tite Hurricane Force Universal Sealer® (optional)
1	5/16" x 1" Stainless steel hex bolt *
1	5/16" Lock washer *
1	5/16" Flat washer *

* When ordered with Power Rail P6 Extrusion

NOTE:

A powered single bead applicator must be used when applying the Universal Sealer.

WARNING:

Read and follow the manufacturers warning label before using the Weather-Tite Hurricane Force Universal Sealer

- H. Ensure a proper mix of the Weather-Tite Hurricane Force Universal Sealer[®] by first dispensing a small amount in a waste receptacle. (See Figure 2-6)

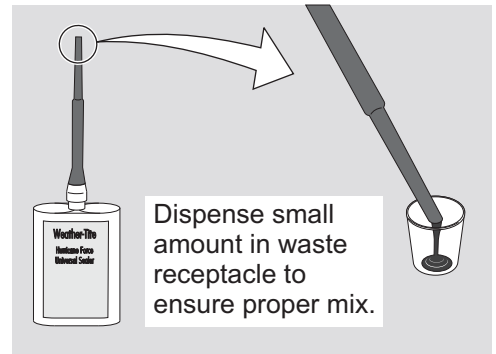


Figure 2-6: Ensuring proper mix of Universal Sealer

- I. Fill the Pocket with Universal Sealer working around the Post and allowing an even flow of Sealant. Fill the Pocket evenly to the top. (See Figure 2-7)

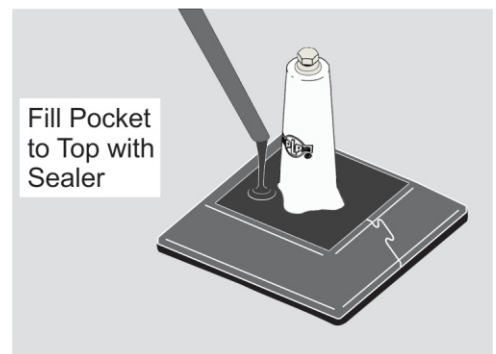


Figure 2-7: Filling Pocket with Sealer



Albuquerque Office
1700 Louisiana Blvd., Suite 130
Albuquerque, NM 87110

Corporate Headquarters
660 Beta Drive
Mayfield Village, OH 44143

Telephone: 800.260.3792
Fax: 505.889.3548
www.preformed.com
E-mail: info@plpsolar.com

© 2018 Preformed Line Products
SP3449-2