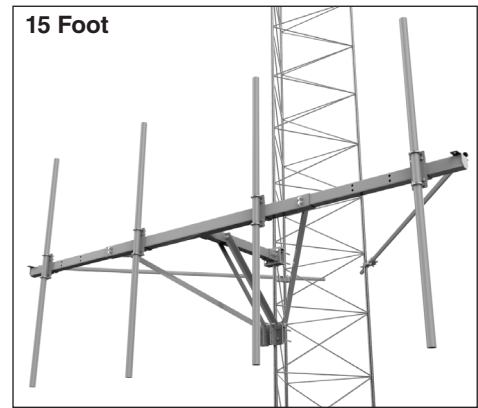
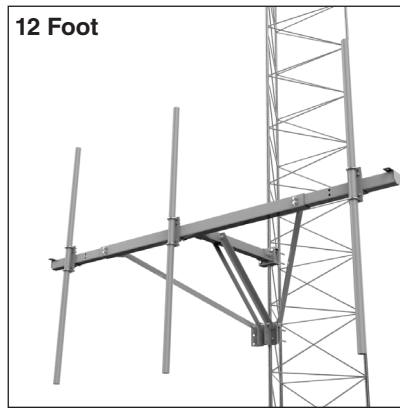




# Antenna Mount



## GENERAL INFORMATION

Antenna Mounts are designed for use on Transmission, Antenna, Communications and other types of straight leg self-supporting or guyed structures. The Antenna Mount comes 90% preassembled to ease the installation process. The adjustable Antenna Mount design can accommodate 10', 12' or 15' face widths with one design.

Antenna Mounts are designed to hold maximum loads and 120 mph wind speeds (test report available upon request). The Antenna Mounts were tested both with balanced and unbalanced loads. The Antenna pole assemblies were also tested for a vertical slip test.

**Test Data available upon request.**

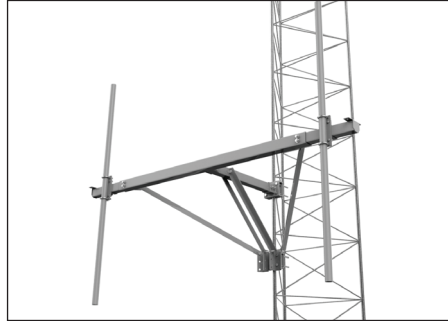
**Reference:** TR-920-E

## INSTALLATION GUIDELINES

Antenna Mounts are shipped 90% preassembled and are to be installed on 1-1/4" – 4-1/2" straight leg towers. During the installation all bolts need to be torqued to the specified values in the Application Procedure (**SP3403**).

Antenna Pole assemblies have two designs: one for the outer 3" square tube (supplied with mounts) and one for the inner 3-1/2" square tube.

# Antenna Mount

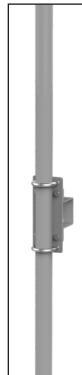


## Antenna Mounts - Powder Coated

Catalog Number	Description	Tower Leg Diameter	Quantity	Weight (lbs)
AMT-1172	Antenna Mount with 2 outer 72" antenna pole assemblies	1-1/2" – 3"	1	345.10
AMT-1184	Antenna Mount with 2 outer 84" antenna pole assemblies			352.30
AMT-1196	Antenna Mount with 2 outer 96" antenna pole assemblies			359.71
AMT-1072	Antenna Mount with 2 outer 72" antenna pole assemblies	3" – 4-1/2"		345.10
AMT-1084	Antenna Mount with 2 outer 84" antenna pole assemblies			352.30
AMT-1096	Antenna Mount with 2 outer 96" antenna pole assemblies			359.71

## Antenna Pole Assembly

Catalog Number	Description	Quantity	Weight (lbs)
APL-1072	Antenna Mount Assembly 72"	1	34.99
APL-1084	Antenna Mount Assembly 84"	1	38.59
APL-1096	Antenna Mount Assembly 96"	1	42.29



## Tie Back Assembly

Catalog Number	Description	Tower Leg Diameter	Quantity	Weight (lbs)
TBA-1120	Tie Back Assembly – 10 ft	1-1/2" – 3"	1	32.02
TBA-1121	Tie Back Assembly – 10 ft	3" – 4-1/2"	1	32.02



# Antenna Mount

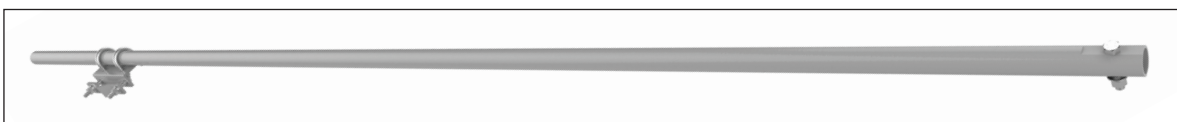


### Antenna Mounts - Galvanized Steel

Catalog Number	Description	Tower Leg Diameter	Quantity	Weight (lbs)
AMT-2172	Antenna Mount with 2 outer 72" antenna pole assemblies	1-1/2" – 3"	1	345.10
AMT-2184	Antenna Mount with 2 outer 84" antenna pole assemblies			352.30
AMT-2196	Antenna Mount with 2 outer 96" antenna pole assemblies			359.71
AMT-2072	Antenna Mount with 2 outer 72" antenna pole assemblies	3" – 4-1/2"		345.10
AMT-2084	Antenna Mount with 2 outer 84" antenna pole assemblies			352.30
AMT-2096	Antenna Mount with 2 outer 96" antenna pole assemblies			359.71

### Antenna Pole Assembly

Catalog Number	Description	Quantity	Weight (lbs)
APL-2072	Antenna Mount Assembly 72"	1	34.99
APL-2084	Antenna Mount Assembly 84"	1	38.59
APL-2096	Antenna Mount Assembly 96"	1	42.29



### Tie Back Assembly

Catalog Number	Description	Tower Leg Diameter	Quantity	Weight (lbs)
TBA-2120	Tie Back Assembly – 10 ft	1-1/2" – 3"	1	32.02
TBA-2121	Tie Back Assembly – 10 ft	3" – 4-1/2"	1	32.02