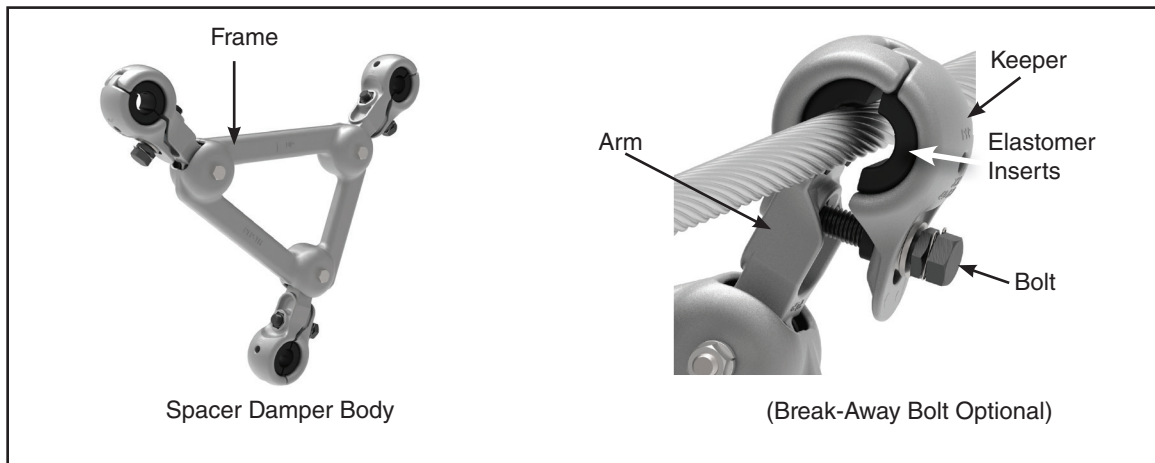




## CUSHION-GRIP® Spacer Damper with Bolted Arm

Be sure to read and completely understand this procedure before applying product. Be sure to select the proper PREFORMED™ product before application.



### NOMENCLATURE

#### Step #1

##### OPEN KEEPERS

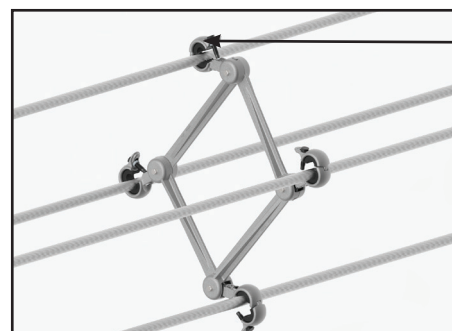
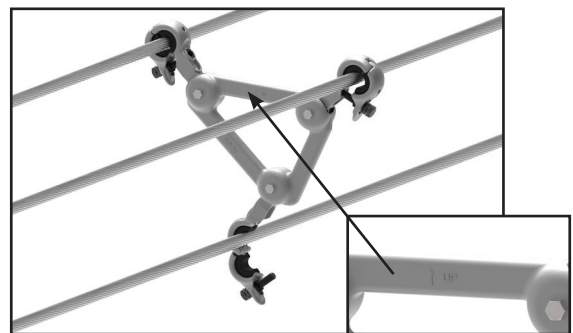
Back out each keeper bolt until disengaged from the arm.



#### Step #2

##### POSITION SPACER DAMPER ON CONDUCTORS

Position Spacer Damper on conductors noting the orientation (up arrow) molded on the frame. Some spacer dampers may have a red paint mark on the keeper to indicate orienting that arm to the top conductor. Be sure that the Spacer Damper sits squarely on each conductor.

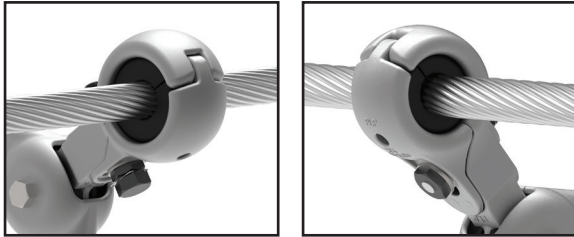


Orient red painted keeper to top conductor in the bundle

Quad Bundle Diamond Configuration

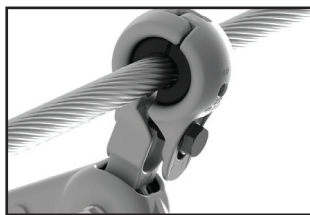
**Step #3a Break-Away Bolt ONLY – Refer to Step 3b and 3c for Standard Hex Head Bolt.**

**CLOSE KEEPERS** - Tighten the bolt by hand using a 15/16" socket. Wrench until the shear head snaps off to ensure proper torque.



**Step #3b Standard Hex Bolt ONLY**

**CLOSE KEEPERS** - Close each keeper around the conductor and tighten the bolts using an "impact style" wrench or tool.

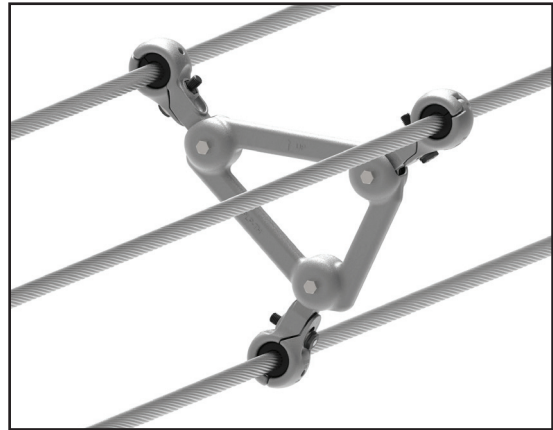


**Step #3c Standard Hex Bolt ONLY:**

After installation, the final torque at each bolt should be checked to ensure a torque of 40 ft-lbs has been applied. Each conductor should be held firmly in the cushions. The spacer damper should not move if pulled by hand.



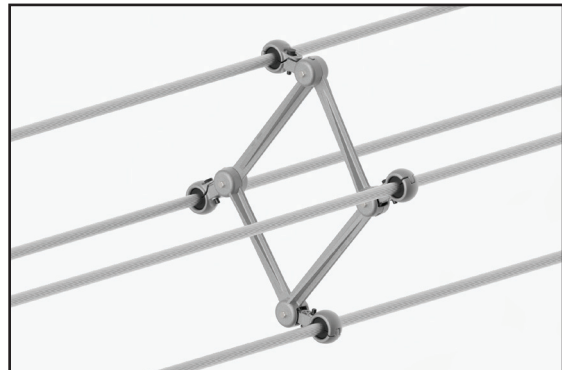
**Step #4 Completed Application.**



Standard Configuration

**NOTE:** Each bolt can only be installed a maximum of three times before being replaced.

**Break-Away Bolt – Single Installation ONLY.**



Quad Bundle Diamond Configuration

**SAFETY CONSIDERATIONS**

This application procedure is not intended to supersede any company construction or safety standards. This procedure is offered only to illustrate safe application for the individual. **FAILURE TO FOLLOW THESE PROCEDURES MAY RESULT IN PERSONAL INJURY OR DEATH.**

**Do not modify this product under any circumstances.**

This product is intended for use by trained technicians only. **This product should not be used by anyone who is not familiar with, and not trained to use it.**

When working in the area of energized lines, extra care should be taken to prevent accidental electrical contact.

For proper performance and personal safety, be sure to select the proper size PREFORMED™ product before application.

PREFORMED products are precision devices. To ensure proper performance, they should be stored in cartons under cover and handled carefully.



**PREFORMED** LINE PRODUCTS

P.O. Box 91129, Cleveland, Ohio 44101 • 440.461.5200 • [preformed.com](http://preformed.com) • email: [inquiries@preformed.com](mailto:inquiries@preformed.com)

SP3041-5