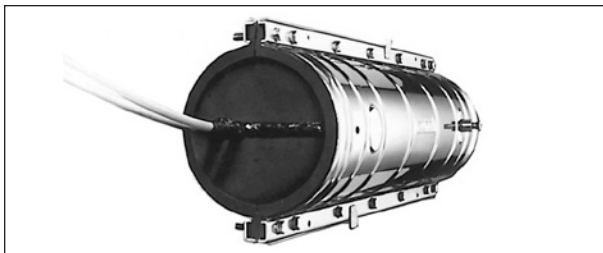




FIBERLIGN® Splice Case



The PREFORMED™ Splice Case, the most effective Splice Case made, offers easy-to-use LOCKBAR™ Fastening. LOCKBAR Fastening reduces Splice Case installation and re-entry time by as much as 50%.

The PREFORMED Splice Case is versatile, accommodating a wide variety of fiber optic applications when used with FIBERLIGN Organizers. It effectively maintains an airtight, watertight seal around all types of fiber optic cable.

The closure is designed to remain secure whether the application is overhead or underground, and in hot, dry, warm, wet or cold environments. In addition, the PREFORMED Splice Case can be easily re-entered without a special kit or special tools.

LOCKBAR Fastening for Rapid Installation and Re-entry

The revolutionary LOCKBAR Fastening System—a PREFORMED exclusive—eliminates the need to individually assemble nuts and bolts to close the PREFORMED Splice Case. The LOCKBAR System features front and back bars that fit into the Splice Case flange. The back bar has factory assembled bolts and nuts; the front bar has keyholes that accept the bolt assemblies on the back bar. Once the bars mate through the flanges, the nuts simply lock into the keyhole and are torqued down in sets.

Maintains an Airtight, Watertight Seal

LOCK-TAPE™ Sealing is central to the Splice Case seal. When properly applied around the cable and laid in the cut End Plates, the LOCK-TAPE System creates a gasket-like seal that locks cables into place and provides for extra strong shear strength to resist cable pull-out.

Strong and Durable; Corrosion-Resistant

Shells of the PREFORMED Splice Case are precision formed of stainless steel with an inside liner of neoprene. LOCKBAR Fasteners, made from the same durable stainless steel, are lightweight and corrosion-resistant. End Plates are made from hard plastic and filled with a rigid polyurethane foam. Torque bars keep the End Plates secure and in alignment during installation and re-entry.

The Practical Re-enterable Case

The PREFORMED Splice Case with LOCKBAR Fastening can be easily re-entered without a special kit. Holes are easily cut in the End Plates to accommodate a variety of cable diameters and multiple entries. These holes can be cut quickly in the field with a Power End Plate Cutter.

Laboratory Tested, Field Proven

Engineering improvements and Splice Case Kit additions have created what is today the most effective, versatile and easy-to-install splice closure available. For comprehensive test data and field reports, contact Preformed Line Products Company.

FIBERLIGN® Splice Case

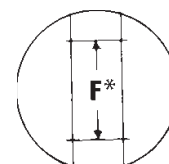
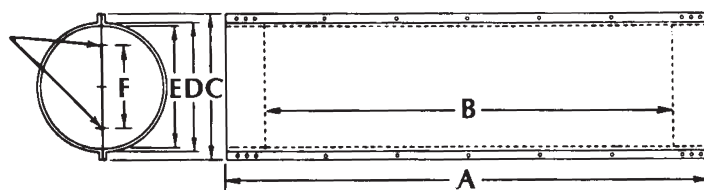
The FIBERLIGN Splice Case, End Plates, Organizers and Splice Trays are designed to fit your specific splicing application. The Splice Cases may be ordered as a kit with two standard End Plates included, or the Splice Case may be ordered without the End Plates. Ordering a Splice Case without the standard End Plates allows you to select

specific End Plates for specialized applications (see pages 4-4 to 4-6 for End Plate selection). A Power End Plate Cutter is required for field installation and a Torque/Socket Tool Kit is available for tightening the Splice Case. FIBERLIGN Organizers and Splice Trays must be ordered separately, see pages 3-2 to 3-7.

Splice Cases with two Standard End Plates Included (mm)							
Catalog Number	Splice Case Dimensions (mm)	A	B	C	D	E	F
8006282	4.0" x 25.8" (102 x 655)	25.8" (655)	20.3" (516)	6.0" (152)	4.5" (114)	4.0" (102)	2.2" (56)
8006377	6.5" x 22.0" (165 x 559)	22.0" (559)	16.2" (412)	9.25" (235)	7.0" (179)	6.5" (165)	4.1" (104)
8006192	6.5" x 28.4" (165 x 721)	28.4" (721)	22.7" (577)	9.25" (235)	7.0" (179)	6.5" (165)	4.1" (104)
8006024	6.5" x 38.4" (165 x 975)	38.4" (975)	32.7" (831)	9.25" (235)	7.0" (179)	6.5" (165)	4.1" (104)
8006261	8.0" x 28.4" (203 x 721)	28.4" (721)	22.7" (567)	10.5" (267)	8.5" (216)	8.0" (203)	5.6" (142)
8006262	8.0" x 38.4" (203 x 975)	38.4" (975)	32.7" (831)	10.5" (267)	8.5" (216)	8.0" (203)	5.6" (142)
8000661*	9.5" x 28.4" (241 x 721)	28.4" (721)	21.6" (549)	12.5" (318)	10.0" (254)	9.5" (241)	7.1" (180)
8000662*	9.5" x 38.4" (241 x 975)	38.4" (975)	31.6" (803)	12.5" (318)	10.0" (254)	9.5" (241)	7.1" (180)
8006251	12.5" x 28.4" (318 x 721)	28.4" (721)	21.6" (549)	15.5" (394)	13.0" (330)	12.5" (318)	9.3" (236)
8006252	12.5" x 38.4" (318 x 975)	38.4" (975)	31.6" (803)	15.5" (394)	13.0" (330)	12.5" (318)	9.3" (236)

*Includes one Two-Section End Plate and one Three-Section End Plate.

Marks on End Plates denote usable area for cable entrance holes.



Three-Section End Plate

The following Splice Case Shell Kits include all materials necessary to install the Stainless Steel Shell halves, along with Aerial Hanger Brackets. All other material necessary for installation is included with the End Plates which are ordered separately.

Splice Case Shell Kits without End Plates Included (mm)							
Catalog Number	Splice Case Dimensions (mm)	A	B	C	D	E	F
8006559	4.0 x 25.8 (102 x 655)	25.8" (655)	20.3" (516)	6.0" (152)	4.5" (114)	4.0" (102)	2.2" (56)
8006510	6.5 x 22.0 (165 x 559)	22.0" (559)	16.2" (412)	9.25" (235)	7.0" (179)	6.5" (165)	4.1" (104)
8006041	6.5 x 28.4 (165 x 721)	28.4" (721)	22.7" (577)	9.25" (235)	7.0" (179)	6.5" (165)	4.1" (104)
8006043	6.5 x 38.4 (165 x 975)	38.4" (975)	32.7" (831)	9.25" (235)	7.0" (179)	6.5" (165)	4.1" (104)
8006387	8.0 x 28.4 (203 x 721)	28.4" (721)	22.7" (567)	10.5" (267)	8.5" (216)	8.0" (203)	5.6" (142)
8006388	8.0 x 38.4 (203 x 975)	38.4" (975)	32.7" (831)	10.5" (267)	8.5" (216)	8.0" (203)	5.6" (142)
8006186	9.5 x 28.4 (241 x 721)	28.4" (721)	21.6" (549)	12.5" (318)	10.0" (254)	9.5" (241)	7.1" (180)
8006187	9.5 x 38.4 (241 x 975)	38.4" (975)	31.6" (803)	12.5" (318)	10.0" (254)	9.5" (241)	7.1" (180)
8006268	12.5 x 28.4 (318 x 721)	28.4" (721)	21.6" (549)	15.5" (394)	13.0" (330)	12.5" (318)	9.3" (236)
8006269	12.5 x 38.4 (318 x 975)	38.4" (975)	31.6" (803)	15.5" (394)	13.0" (330)	12.5" (318)	9.3" (236)



FIBERLIGN® Splice Case

End Plate Kits

A variety of End Plate combinations are available for use with the PREFORMED™ Splice Case. Each Kit includes the LOCK-TAPE™ Sealant, Cue Card, and CABLE Mea-SURE™ Tape required for installation. The End Plates shown are

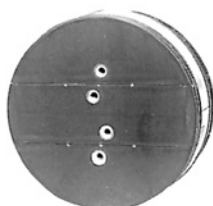
examples of configurations for the 4.0" (102 mm), 6.5" (165 mm), 8.0" (203 mm), 9.5" (241 mm), and 12.5" (318 mm) End Plates used with the FIBERLIGN Splice Cases.



Standard Two-Section End Plate



Standard Three-Section End Plate



End Plate with factory-installed bonding/grounding inserts*



End Plate with factory-installed cable entry ports



End Plate with factory-installed bonding/grounding inserts* and cable entry ports

*Bonding/grounding inserts are also used for strength member tie-off for fiber optic cables.

4.0" (102 mm) FIBERLIGN Splice Case End Plates	
Catalog Number	Description
8003277	One Standard Two-Section End Plate
8003103	Two Standard Two-Section End Plates
80804985	One Two-Section End Plate with three inserts for bonding/grounding, and three "L" Brackets for cable shield isolation/strength member tie-off.
8003275	One Two-Section End Plate with two factory-installed ½" (13) cable ports for future entry 0.56" (14) max. cable, two inserts for bonding/grounding, two "L" Brackets for cable shield isolation/strength member tie-off. No space for field drilled cable entries.
8003274	One Two-Section End Plate with one factory-installed ½" (13) cable port for future entry 0.56" (14) max. cable, three inserts for bonding/grounding, three "L" Brackets for cable shield isolation/strength member tie-off, and space for two field-drilled cable entrances 0.6" (15) max.cables.

FIBERLIGN Splice Case Accessories	
Catalog Number	Description
8003175	"L" Bracket Bonding Kit – (4) bonding brackets and retainer clips

FIBERLIGN® Splice Case

6.5" (165 mm) FIBERLIGN Splice Case End Plates	
Catalog Number	Description
8003252	One Standard Two-Section End Plate
8000361	One Standard Three-Section End Plate
8003018	Two Standard Two-Section End Plates
8003278	One Two-Section End Plate with two bonding/grounding inserts and two "L" Brackets for cable shield isolation/strength member tie-off.
8003163	One Three-Section End Plate with four bonding/grounding inserts and four "L" Brackets for cable shield isolation/strength member tie-off.
8003093	One Three-Section End Plate with two factory-installed cable ports [for future cable entry, cables up to 0.8" (20) diameter], four bonding/grounding inserts, and four "L" brackets for cable shield isolation/strength member tie-off.
8003112	One Two-Section End Plate with four factory-installed cable ports [for future cable entry, cables up to 0.8" (20) diameter], four bonding/grounding inserts, and four "L" brackets for cable shield isolation/strength member tie-off.
8003225	One solid End Plate with six factory-installed cable ports [for future cable entry, cable up to 0.8" (20) diameter], and no space for field drilled cable entries.
8003226	One Three-Section End Plate with six bonding/grounding inserts, and six "L" Brackets for cable shield isolation/strength member tie-off.
8003178	One Three-Section End Plate with two factory-installed cable ports [for future cable entry, cables up to 0.8" (20) diameter], five bonding/grounding inserts, and five "L" Brackets for cable shield isolation/strength member tie-off.

8.0" (203 mm) FIBERLIGN Splice Case End Plates	
Catalog Number	Description
8003282	One Standard Two-Section End Plate
8003110	One Standard Three-Section End Plate
8003098	Two Standard Two-Section End Plates
8003213	One Three-Section End Plate with two factory-installed cable port [for future cable entry, accepts cables up to 0.8" (20) diameter], five bonding/grounding inserts, and five "L" brackets for cable shield isolation/strength member tie-off.
8003227	One Three-Section End Plate with six bonding/grounding inserts, and six "L" brackets for cable shield isolation/strength member tie-off.

FIBERLIGN Splice Case Accessories	
Catalog Number	Description
8003175	"L" Bracket Bonding Kit – (4) bonding brackets and retainer clips



FIBERLIGN® Splice Case

9.5" (241 mm) FIBERLIGN Splice Case End Plates	
Catalog Number	Description
8003283	One Standard Two-Section End Plate
8000381	Two Standard Two-Section End Plates
800081098	One Standard Three-Section End Plate
8000352	One solid End Plate with four factory-installed cable ports [for future cable entry, 1" (25) cable diameter], and no space for field drilled cable entries.
8000353	One solid End Plate with six factory-installed cable ports [for future cable entry, 1" (25) cable diameter], and no space for field drilled cable entries.
8000354	One solid End Plate with eight factory-installed cable ports [for future cable entry, 1" (25) cable diameter], and no space for field drilled cable entries.
80805166	One Three-Section End Plate with eight bonding/grounding inserts and eight "L"-Brackets for cable shield isolation/strength member tie-off.
80805120	One Three-Section End Plate with twelve bonding/grounding inserts, four factory-installed cable ports [for future cable entry, 0.8" (20) cable diameter], and 12 "L"-Brackets for cable shield isolation/strength member tie-off.

12.5" (381 mm) FIBERLIGN Splice Case End Plates	
Catalog Number	Description
8003284	One Standard Two-Section End Plate
8003055	One Standard Three-Section End Plate

FIBERLIGN Splice Case Accessories	
Catalog Number	Description
8003175	"L" Bracket Bonding Kit – (4) bonding brackets and retainer clips