

COYOTE® GLC 9.5" x 17" and 9.5" x 28"

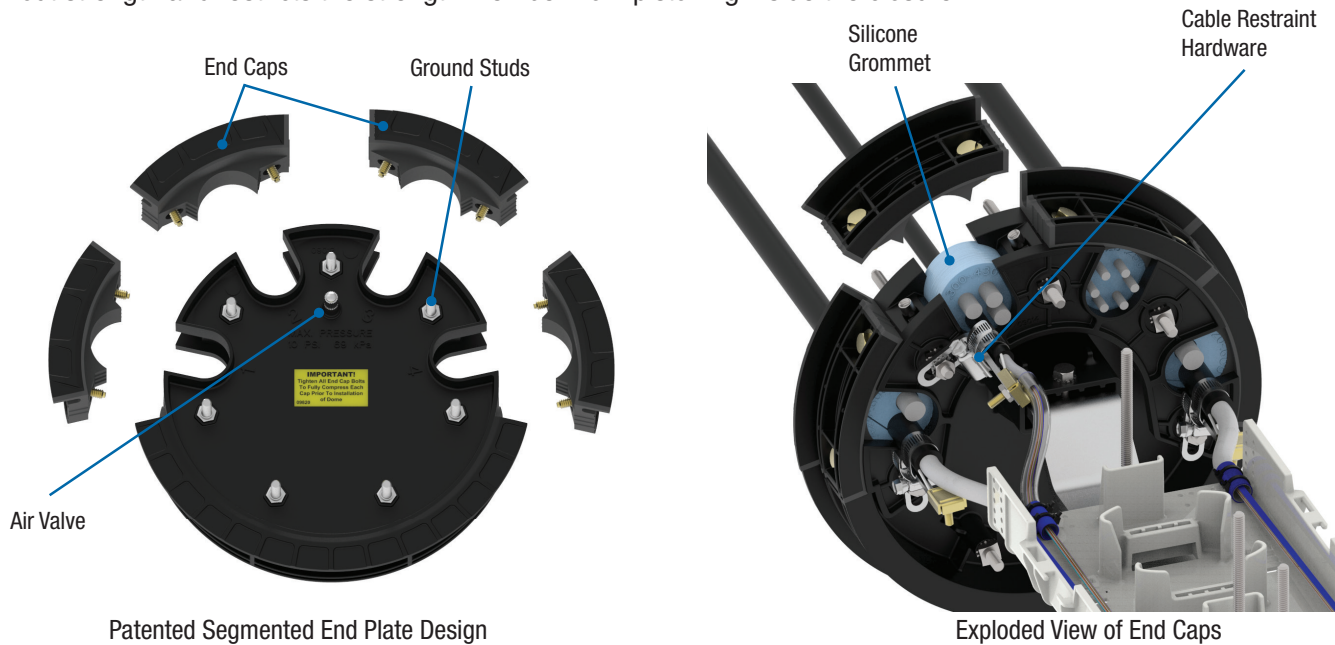
The **COYOTE GLC (Ground Level Closure)** offers two length options of 17" and 28" to support either buffer tube or ribbon fiber applications. These closures utilize PLP's patented segmented end plate design, which allows for easy installation of a variety of cable sizes in conjunction with our grommets. The GLC is a hermetically sealed pedestal system that permits a high volume of uncut slack storage and its unique design doesn't force you to work where the closure is installed.

Features and Benefits

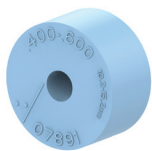
- 4-Port segmented end plate design provides independent access to each cable port without disrupting surrounding cables
- Multiple tray designs support mass fusion splicing, single fusion splicing, or a combination of both
- Flexible grommet sealing technology supports a wide range of flat and round cable profiles
- Hermetically sealed dome eliminates potential for water intrusion and prevents invasion of insects
- Accessible isolated grounding system that allows ground testing to occur without entering the splice closure
- Slack storage of uncut cable allows dome closure to be carried to a splice truck or other suitable working environments
- The small GLC base with cover can be used for pedestrian applications (Tier 5), while the large base with cover can be used for sidewalk or light duty truck applications (Tier 8).

► PLP's Patented Segmented End Plate

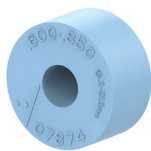
The COYOTE® GLC features PLP's patented segmented end plate system which allows independent access to each cable port without disrupting surrounding cables. The sealing system created by the compression of the end plate caps against the COYOTE silicone grommets provides a secure seal around a variety of cable profiles. This eliminates the need for scuffing, adhesives, and sealing tapes. The cable restraint hardware provides proper pull-out strength and restricts the strength member from pistoning inside the closure.



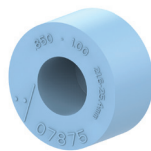
► COYOTE® Silicone Grommets



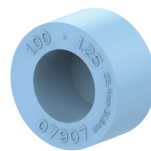
Catalog No: 8003691
0.40" – 0.60"
(10.2 – 15.2 mm)



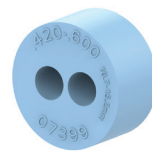
Catalog No: 8003692
0.60" – 0.85"
(15.2 – 21.6 mm)



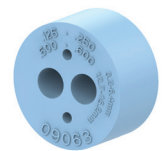
Catalog No: 8003693
0.85" – 1.00"
(21.6 – 25.4 mm)



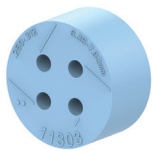
Catalog No: 8003694
1.00" – 1.25"
(25.4 – 31.8 mm)



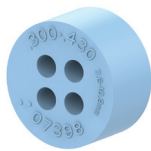
Catalog No: 8003663
0.42" – 0.60"
(10.7 – 15.2 mm)



Catalog No: 8003990
0.50" – 0.60"
(12.7 – 15.2 mm)
0.125" – 0.250"
(3.2 – 6.4 mm) and
Flat Drop



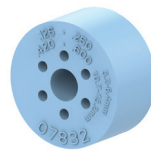
Catalog No: 8004065
0.250" – 0.312"
(6.4 – 7.9 mm)



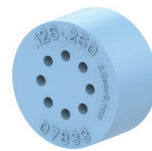
Catalog No: 8003664
0.30" – 0.43"
(7.6 – 10.9 mm)



Catalog No: 8003665
0.125" – 0.250"
(3.2 – 6.4 mm)
and Flat Drop



Catalog No: 8003676
0.42" – 0.60"
(10.7 – 15.2 mm)
0.125" – 0.250"
(3.2 – 6.4 mm) and
Flat Drop



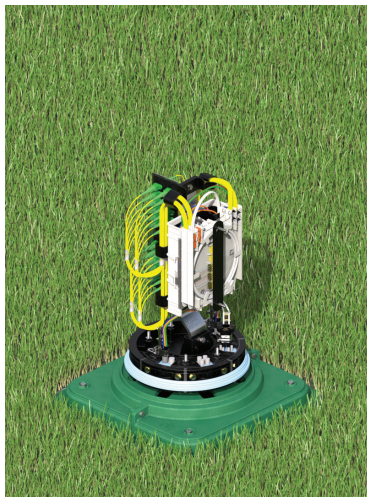
Catalog No: 8003677
0.125" – 0.250"
(3.2 – 6.4 mm) and
Flat Drop



Catalog No: 8004122
RPX Only

► COYOTE® GLC Bases & Spacers

The COYOTE GLC is a hermetically sealed pedestal system, with multiple organizer types and two base sizes to meet any of your network needs. The organizers contain PLP's patented segmented end plate, which in conjunction with COYOTE silicone grommets, eliminate water intrusion and insect invasion. The bases can store an ample amount of uncut slack storage which allows the closure to be moved to a more suitable working environment. The small base can be used for cables up to 0.60" in diameter and is used for pedestrian applications (Tier 5 rating). The large base can be used for cables up to 1.25" in diameter and is ideal for sidewalk or light duty truck applications (Tier 8 rating).

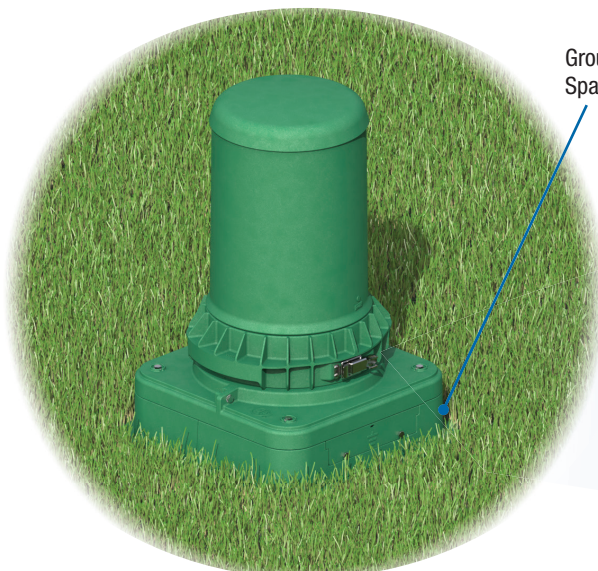


COYOTE 9.5" x 17" GLC with Small Base



COYOTE 9.5" x 28" GLC with Small Base

The GLC can be equipped with spacers to raise the base 3" for adjustment to ground level. These spacers can be used to isolate ground connections. The grounding spacer comes with seven external isolated ground connections. The dual grounding spacer comes with fourteen external isolated ground connections.



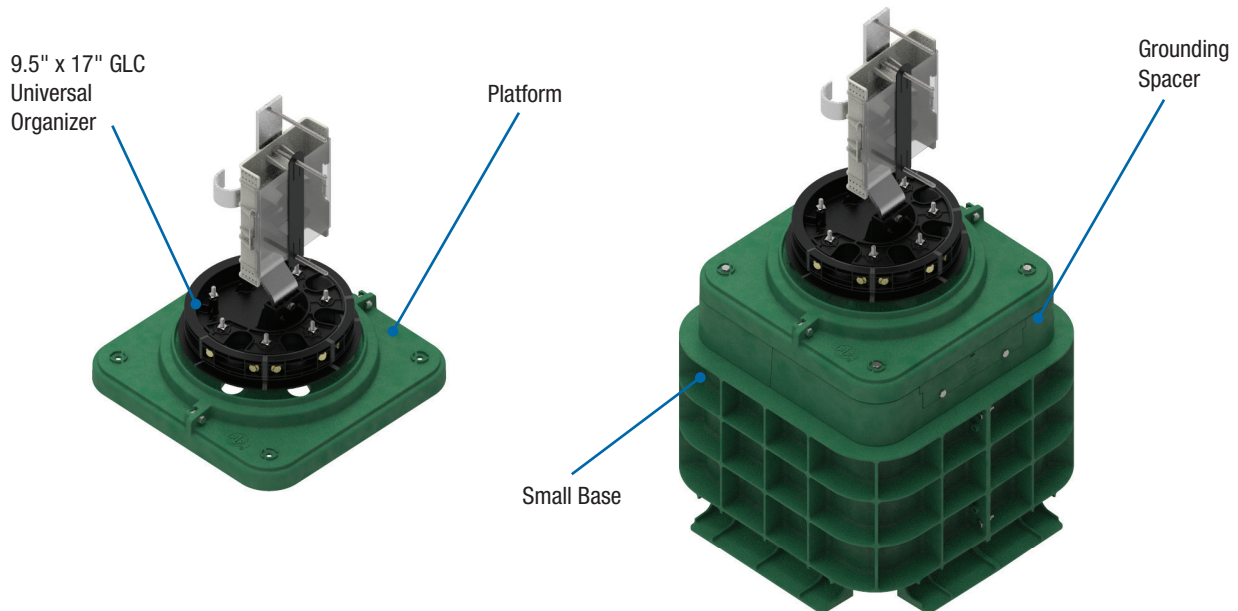
COYOTE 9.5" x 17" GLC with Small Base and
Grounding Spacer

Grounding
Spacer



Isolated External
Ground Studs

► COYOTE® 9.5" x 17" GLC Dome Closure Universal Organizer



Catalog Number: COYGLC-F1-000
Universal Organizer

Catalog Number: COYGLC-F1B-100
Universal Organizer with Small
Base and Grounding Spacer

Specifications: COYOTE 9.5" x 17" GLC with Universal Organizer

Catalog Numbers		COYGLC-F1-000, COYGLC-F1B-000, COYGLC-F1B-100
Splice Capacity (Maximum) – Single Fusion (Low Profile, 80809958), Single Fusion (Low Profile, 80813152), Single Fusion (Deep Profile, 80808945), Mass Fusion (Deep Profile, LGSTR144)		96, 144, 80, 288
Number of Splice Trays – 80809958, 80813152, 80808945, LGSTR144		4, 4, 2, 2
Cable Ports ¹		4
Cable Diameters	Small Base	0.093" – 0.60" (2.4 – 15.2 mm) and Flat Drop
	Large Base	0.093" – 1.25" (2.4 – 31.8 mm) and Flat Drop
Ground Studs		7
Configuration		Butt
Cable Types		Buffer Tube or Ribbon
Application		Pedestal
Ingress Protection		In accordance to Telcordia® GR-13-CORE & GR-902-CORE, Pedestal; IP-68
Size ²		15.4" L x 15.4" W x 20.4" H (390 x 390 x 520 mm)
Kit Contents ³	COYGLC-F1-000	Includes (1) Standard Platform
	COYGLC-F1B-000	Includes (1) Standard Platform and (1) Small Base
	COYGLC-F1B-100	Includes (1) Standard Platform, (1) Small Base, & (1) Grounding Spacer Kit

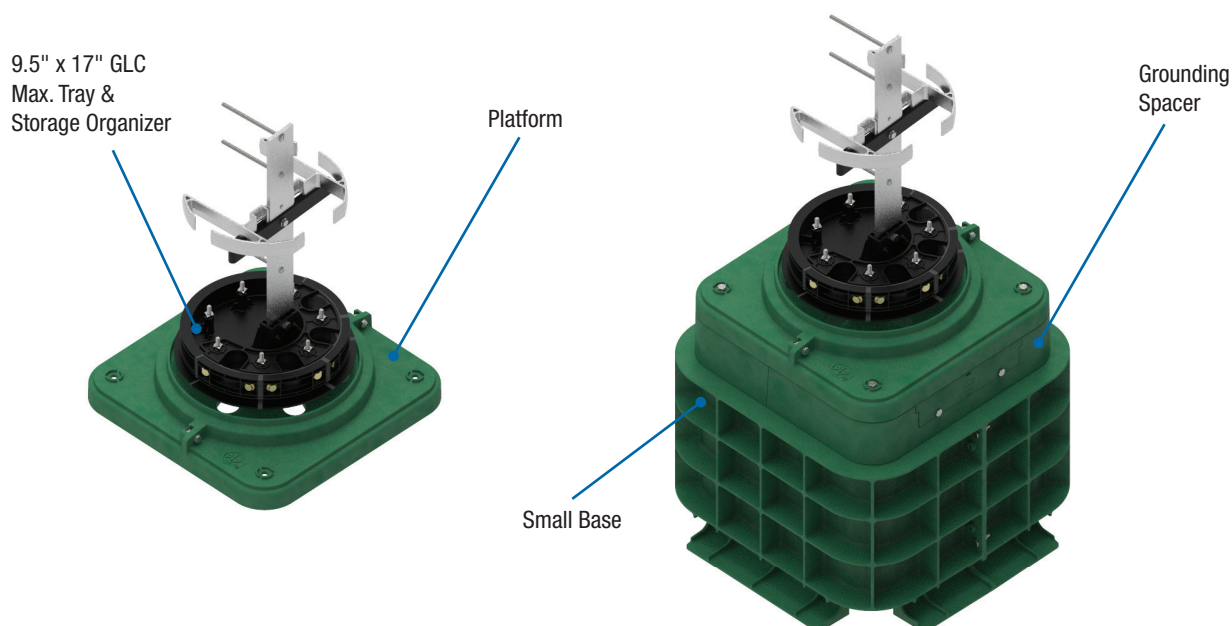
¹ Multi-hole grommets allow for more than one cable to enter each cable port

² Includes platform, collar, and dome assembly only. See COYOTE GLC Bases for base sizes

³ All kits include (1) Green GLC Dome, (1) COYOTE 9.5" End Plate with Organizer, (1) Gasket, (1) Collar, (2) 2-Hole Grommets 0.42"-0.60", (1) 4-Hole Grommet 0.30"-0.43", (1) 6-Hole Grommet 0.125"-0.250" & Flat Drop Cable, (1) Splice Tray (Cat. No. 80808945) and Cable Restraint Hardware.

COYOTE® 9.5" x 17" GLC Dome Closure

Maximum Tray & Storage Organizer



Catalog Number: COYGLC-F2-000
Max. Tray & Storage Organizer

Catalog Number: COYGLC-F2B-100
Max. Tray & Storage Organizer with
Small Base and Grounding Spacer

Specifications: COYOTE 9.5" x 17" GLC with Max. Tray & Storage Organizer

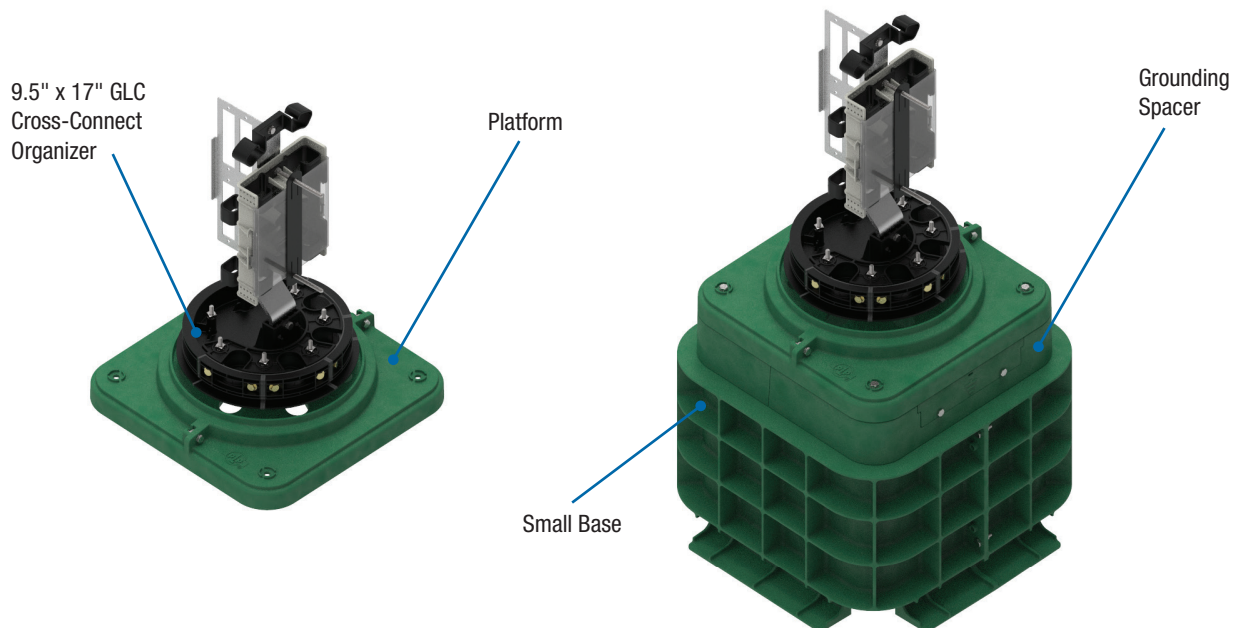
Catalog Numbers		COYGLC-F2-000, COYGLC-F2B-000, COYGLC-F2B-100
Splice Capacity (Maximum) – Single Fusion (Low Profile, 80809958), Single Fusion (Low Profile, 80813152), Single Fusion (Deep Profile, 80808945), Mass Fusion (Deep Profile, LGSTR144)		312, 468, 240, N/A
Number of Splice Trays – 80809958, 80813152, 80808945, LGSTR144		13, 13, 6, N/A
Cable Ports ¹		4
Cable Diameters	Small Base	0.093" – 0.60" (2.4 – 15.2 mm) and Flat Drop
	Large Base	0.093" – 1.25" (2.4 – 31.8 mm) and Flat Drop
Ground Studs		7
Configuration		Butt
Cable Types		Buffer Tube Only
Application		Pedestal
Ingress Protection		In accordance to Telcordia® GR-13-CORE & GR-902-CORE, Pedestal; IP-68
Size ²		15.4" L x 15.4" W x 20.4" H (390 x 390 x 520 mm)
Kit Contents ³	COYGLC-F2-000	Includes (1) Standard Platform
	COYGLC-F2B-000	Includes (1) Standard Platform and (1) Small Base
	COYGLC-F2B-100	Includes (1) Standard Platform, (1) Small Base, & (1) Grounding Spacer Kit

¹ Multi-hole grommets allow for more than one cable to enter each cable port

² Includes platform, collar, and dome assembly only. See COYOTE GLC Bases for base sizes

³ All kits include (1) Green GLC Dome, (1) COYOTE 9.5" End Plate with Organizer, (1) Gasket, (1) Collar, (2) 2-Hole Grommets 0.42"-0.60", (1) 4-Hole Grommet 0.30"-0.43", (1) 6-Hole Grommet 0.125"-0.250" & Flat Drop Cable, (1) Splice Tray (Cat. No. 80808945) and Cable Restraint Hardware.

► COYOTE® 9.5" x 17" GLC Dome Closure Cross-Connect Organizer



Catalog Number: COYGLC-F3-000
Cross-Connect Organizer

Catalog Number: COYGLC-F3B-100
Cross-Connect Organizer with Small
Base and Grounding Spacer

Specifications: COYOTE 9.5" x 17" GLC with Cross-Connect Organizer

Catalog Numbers		COYGLC-F3-000, COYGLC-F3B-000, COYGLC-F3B-100
Splice Capacity (Maximum) – Single Fusion (Low Profile, 80809958), Single Fusion (Low Profile, 80813152), Single Fusion (Deep Profile, 80808945), Mass Fusion (Deep Profile, LGSTR144)		96, 144, 80, 288
Number of Splice Trays – 80809958, 80813152, 80808945, LGSTR144		4, 4, 2, 2
Cable Ports ¹		4
Cable Diameters	Small Base	0.093" – 0.60" (2.4 – 15.2 mm) and Flat Drop
	Large Base	0.093" – 1.25" (2.4 – 31.8 mm) and Flat Drop
Ground Studs		7
Configuration		Butt
Cable Types		Buffer Tube or Ribbon
Application		Pedestal
Ingress Protection		In accordance to Telcordia® GR-13-CORE & GR-902-CORE, Pedestal; IP-68
Size ²		15.4" L x 15.4" W x 20.4" H (390 x 390 x 520 mm)
Adapter Port Quantity (Maximum)		48 SC or 96 LC
Kit Contents ³	COYGLC-F3-000	Includes (1) Standard Platform
	COYGLC-F3B-000	Includes (1) Standard Platform and (1) Small Base
	COYGLC-F3B-100	Includes (1) Standard Platform, (1) Small Base, & (1) Grounding Spacer Kit

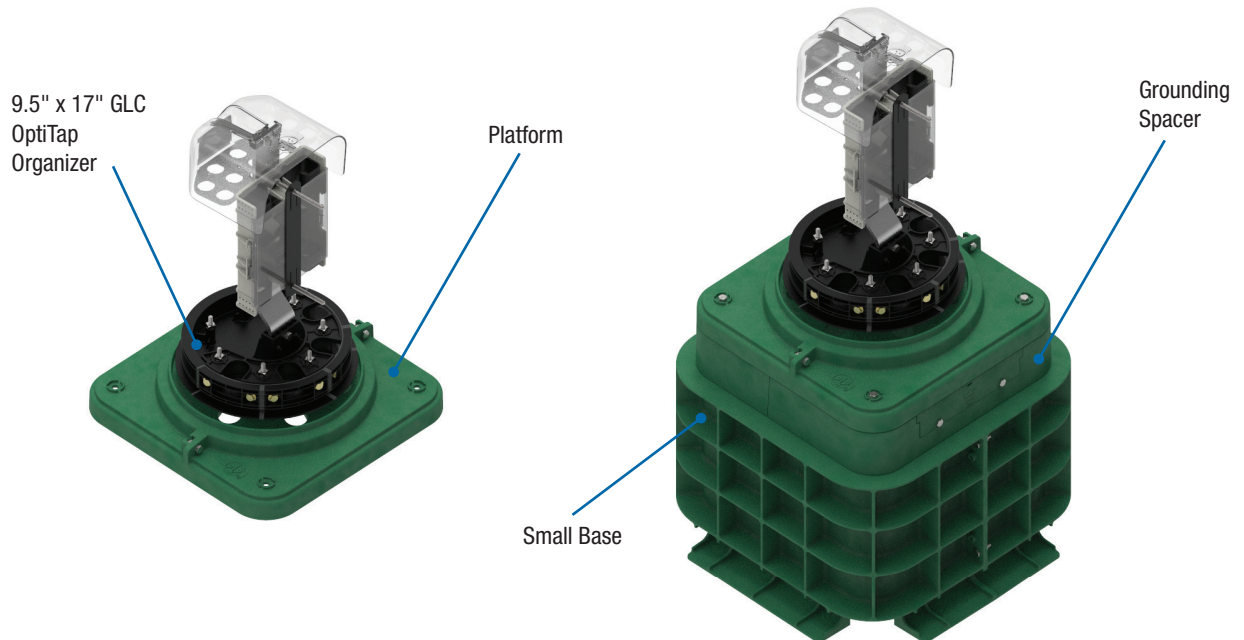
¹ Multi-hole grommets allow for more than one cable to enter each cable port

² Includes platform, collar, and dome assembly only. See COYOTE GLC Bases for base sizes

³ All kits include (1) Green GLC Dome, (1) COYOTE 9.5" End Plate with Organizer, (1) Gasket, (1) Collar, (2) 2-Hole Grommets 0.42"-0.60", (1) 4-Hole Grommet 0.30"-0.43", (1) 6-Hole Grommet 0.125"-0.250" & Flat Drop Cable, (1) Splice Tray (Cat. No. 80808945), (1) Transition Tube Kit and Cable Restraint Hardware.

Telcordia® is a registered trademark of Telcordia Technologies Inc., now part of Ericsson.

► COYOTE® 9.5" x 17" GLC Dome Closure OptiTap® Organizer



Catalog Number: COYGLC-F4-000
OptiTap Organizer

Catalog Number: COYGLC-F4B-100
OptiTap Organizer with Small
Base and Grounding Spacer

Specifications: COYOTE 9.5" x 17" GLC with OptiTap Organizer

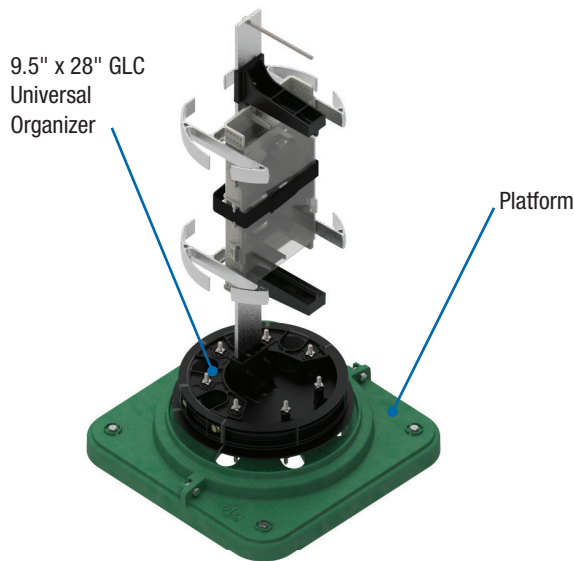
Catalog Numbers		COYGLC-F4-000, COYGLC-F4B-000, COYGLC-F4B-100
Splice Capacity (Maximum) – Single Fusion (Low Profile, 80809958), Single Fusion (Low Profile, 80813152), Single Fusion (Deep Profile, 80808945), Mass Fusion (Deep Profile, LGSTR144)		96, 144, 80, 288
Number of Splice Trays – 80809958, 80813152, 80808945, LGSTR144		4, 4, 2, 2
Cable Ports ¹		4
Cable Diameters	Small Base	0.093" – 0.60" (2.4 – 15.2 mm) and Flat Drop
	Large Base	0.093" – 1.25" (2.4 – 31.8 mm) and Flat Drop
Ground Studs		7
Configuration		Butt
Cable Types		Buffer Tube or Ribbon and Pre-Connectorized Hardened Drop
Application		Pedestal
Ingress Protection		In accordance to Telcordia® GR-13-CORE & GR-902-CORE, Pedestal; IP-68
Size ²		15.4" L x 15.4" W x 20.4" H (390 x 390 x 520 mm)
OptiTap Adapter Quantity (Maximum)		8
Kit Contents ³	COYGLC-F4-000	Includes (1) Standard Platform
	COYGLC-F4B-000	Includes (1) Standard Platform and (1) Small Base
	COYGLC-F4B-100	Includes (1) Standard Platform, (1) Small Base, & (1) Grounding Spacer Kit

¹ Multi-hole grommets allow for more than one cable to enter each cable port

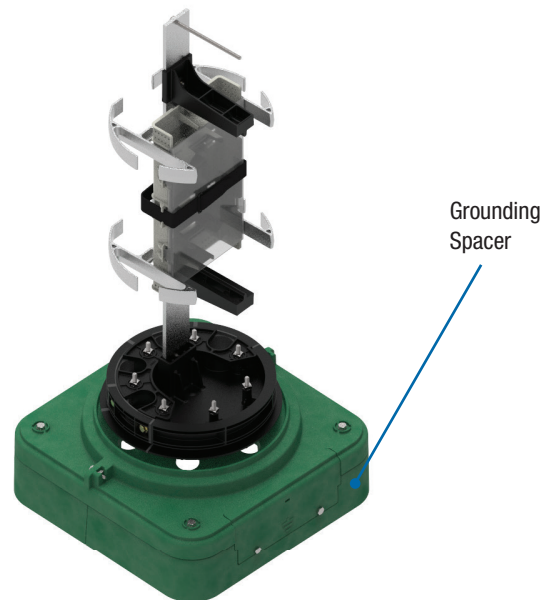
² Includes platform, collar, and dome assembly only. See COYOTE GLC Bases for base sizes

³ All kits include (1) Green GLC Dome, (1) COYOTE 9.5" End Plate with Organizer, (1) Gasket, (1) Collar, (2) 2-Hole Grommets 0.42"-0.60", (1) 4-Hole Grommet 0.30"-0.43", (1) 6-Hole Grommet 0.125"-0.250" & Flat Drop Cable, (1) Splice Tray (Cat. No. 80808945), (1) Transition Tube Kit and Cable Restraint Hardware.
Telcordia® is a registered trademark of Telcordia Technologies Inc., now part of Ericsson.

► COYOTE® 9.5" x 28" GLC Dome Closure Universal Organizer



Catalog Number: COYGLC-F5-000
Universal Organizer



Catalog Number: COYGLC-F5-100
Universal Organizer with
Grounding Spacer

Specifications: COYOTE 9.5" x 28" GLC with Universal Organizer

Catalog Numbers		COYGLC-F5-000, COYGLC-F5-100
Splice Capacity (Maximum) – Single Fusion (Standard Profile, 80810086), Single Fusion (Deep Profile, LGSTS72), Mass Fusion (Deep Profile, LGSTR216)		180, 288, 864
Number of Splice Trays – 80810086, LGSTS72, LGSTR216		5, 4, 4
Cable Ports ¹		4
Cable Diameters	Small Base	0.093" – 0.60" (2.4 – 15.2 mm) and Flat Drop
	Large Base	0.093" – 1.25" (2.4 – 31.8 mm) and Flat Drop
Ground Studs		7
Configuration		Butt
Cable Types		Buffer Tube or Ribbon
Application		Pedestal
Ingress Protection		In accordance to Telcordia® GR-13-CORE & GR-902-CORE, Pedestal; IP-68
Size ²		15.4" L x 15.4" W x 31.6" H (390 x 390 x 800 mm)
Kit Contents ³	COYGLC-F5-000	Includes (1) Standard Platform
	COYGLC-F5-100	Includes (1) Platform with Cutout and (1) Grounding Spacer Kit

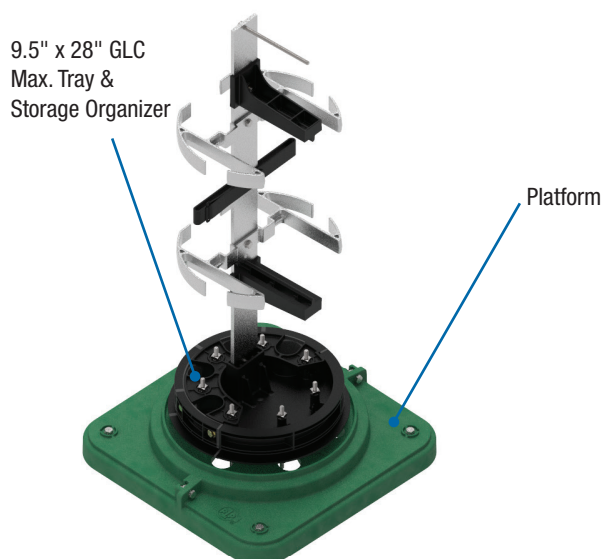
¹ Multi-hole grommets allow for more than one cable to enter each cable port

² Includes platform, collar, and dome assembly only. See COYOTE GLC Bases for base sizes

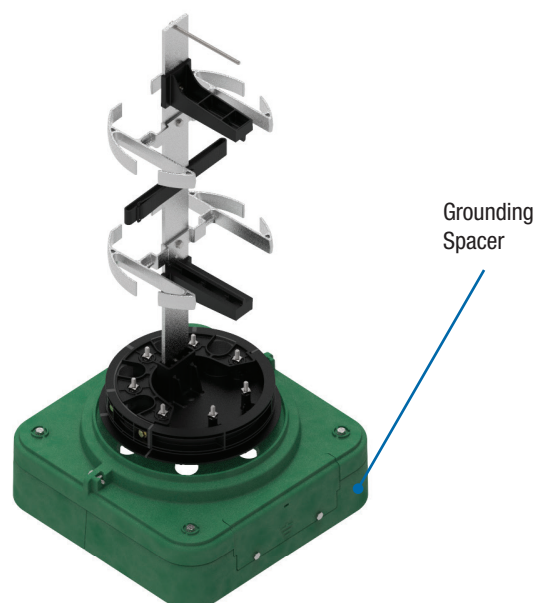
³ All kits include (1) Green GLC Dome, (1) COYOTE 9.5" End Plate with Organizer, (1) Gasket, (1) Collar, (2) 1-Hole Grommets 0.60"-0.80", (1) 2-Hole Grommet 0.42"-0.60", (1) 7-Hole Grommet [1-Hole: 0.42"-0.60" and 6-Holes: 0.125"-0.250" & Flat Drop Cable], (1) Splice Tray (Cat. No. LGSTS72), (1) Transition Tub Kit and Cable Restraint Hardware.

COYOTE® 9.5" x 28" GLC Dome Closure

Maximum Tray & Storage Organizer



Catalog Number: COYGLC-F6-000
Max. Tray & Storage Organizer



Catalog Number: COYGLC-F6-100
Max. Tray & Storage Organizer
with Grounding Spacer

Specifications: COYOTE 9.5" x 28" GLC with Max. Tray & Storage Organizer

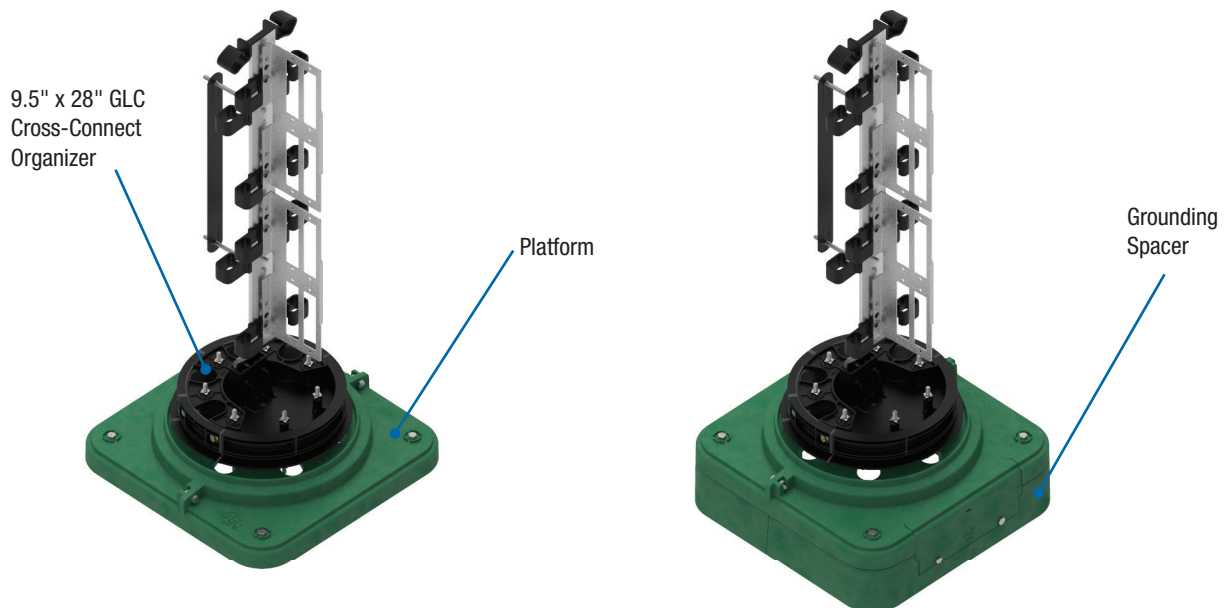
Catalog Numbers		COYGLC-F6-000, COYGLC-F6-100
Splice Capacity (Maximum) – Single Fusion (Standard Profile, 80810086), Single Fusion (Deep Profile, LGSTS72), Mass Fusion (Deep Profile, LGSTR216)		324, 432, N/A
Number of Splice Trays – 80810086, LGSTS72, LGSTR216		9, 6, N/A
Cable Ports ¹		4
Cable Diameters	Small Base	0.093" – 0.60" (2.4 – 15.2 mm) and Flat Drop
	Large Base	0.093" – 1.25" (2.4 – 31.8 mm) and Flat Drop
Ground Studs		7
Configuration		Butt
Cable Types		Buffer Tube Only
Application		Pedestal
Ingress Protection		In accordance to Telcordia® GR-13-CORE & GR-902-CORE, Pedestal; IP-68
Size ²		15.4" L x 15.4" W x 31.6" H (390 x 390 x 800 mm)
Kit Contents ³	COYGLC-F6-000	Includes (1) Standard Platform
	COYGLC-F6-100	Includes (1) Platform with Cutout and (1) Grounding Spacer Kit

¹ Multi-hole grommets allow for more than one cable to enter each cable port

² Includes platform, collar, and dome assembly only. See COYOTE GLC Bases for base sizes

³ All kits include (1) Green GLC Dome, (1) COYOTE 9.5" End Plate with Organizer, (1) Gasket, (1) Collar, (2) 1-Hole Grommets 0.60"-0.80", (1) 2-Hole Grommet 0.42"-0.60", (1) 7-Hole Grommet [1-Hole: 0.42"-0.60" and 6-Holes: 0.125"-0.250" & Flat Drop Cable] (1) Splice Tray (Cat. No. LGSTS72) and Cable Restraint Hardware.

► COYOTE® 9.5" x 28" GLC Dome Closure Cross-Connect Organizer



Catalog Number: COYGLC-F7-000
Cross-Connect Organizer

Catalog Number: COYGLC-F7-100
Cross-Connect Organizer with
Grounding Spacer

Specifications: COYOTE 9.5" x 28" GLC with Cross-Connect Organizer

Catalog Numbers		COYGLC-F7-000, COYGLC-F7-100
Splice Capacity (Maximum) – Single Fusion (Standard Profile, 80810086), Single Fusion (Deep Profile, LGSTS72), Mass Fusion (Deep Profile, LGSTR216)		180, 288, N/A
Number of Splice Trays – 80810086, LGSTS72, LGSTR216		5, 4, N/A
Cable Ports ¹		4
Cable Diameters	Small Base	0.093" – 0.60" (2.4 – 15.2 mm) and Flat Drop
	Large Base	0.093" – 1.25" (2.4 – 31.8 mm) and Flat Drop
Ground Studs		7
Configuration		Butt
Cable Types		Buffer Tube Only
Application		Pedestal
Ingress Protection		In accordance to Telcordia® GR-13-CORE & GR-902-CORE, Pedestal; IP-68
Size ²		15.4" L x 15.4" W x 31.6" H (390 x 390 x 800 mm)
Adapter Port Quantity (Maximum)		96 SC or 196 LC
Kit Contents ³	COYGLC-F7-000	Includes (1) Standard Platform
	COYGLC-F7-100	Includes (1) Platform with Cutout and (1) Grounding Spacer Kit

¹ Multi-hole grommets allow for more than one cable to enter each cable port

² Includes platform, collar, and dome assembly only. See COYOTE GLC Bases for base sizes

³ All kits include (1) Green GLC Dome, (1) COYOTE 9.5" End Plate with Organizer, (1) Gasket, (1) Collar, (2) 1-Hole Grommets 0.60"-0.80", (1) 2-Hole Grommet 0.42"-0.60", (1) 7-Hole Grommet [1-Hole: 0.42"-0.60" and 6-Holes: 0.125"-0.250" & Flat Drop Cable] (1) Splice Tray (Cat. No. LGSTS72), (1) Transition Tube Kit and Cable Restraint Hardware. Additional selections of adapter and pigtail accessories are required.



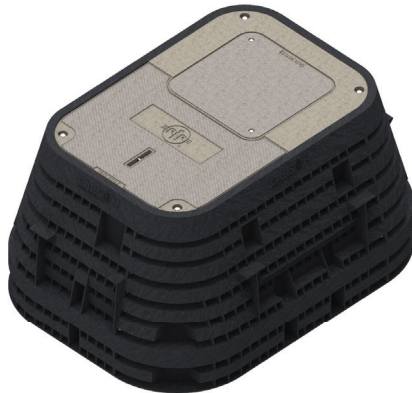
► COYOTE® GLC Bases



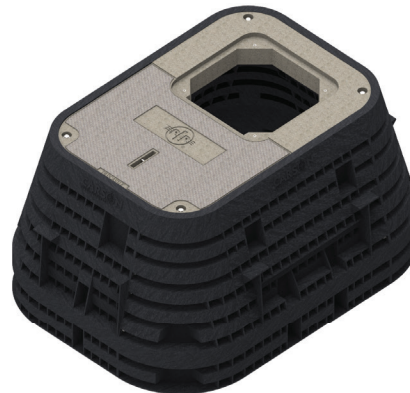
Catalog Number: COYGLC-C1-000
COYOTE GLC Small Base with Cover
17" W x 17" L x 13" H (430 x 430 x 330 mm)
For Fiber Optic Cables with Diameters
up to 0.60" (15.2 mm)



Catalog Number: COYGLC-B-000
COYOTE GLC Small Base
17" W x 17" L x 13" H (430 x 430 x 330 mm)
For Fiber Optic Cables with Diameters
up to 0.60" (15.2 mm)

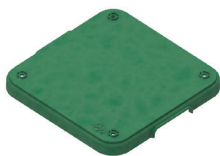


Catalog Number: COYGLC-C4-000
COYOTE GLC Large Base with Cover & Plug
24" W x 36" L x 24" H (610 x 910 x 610 mm)
For Fiber Optic Cables with Diameters
up to 1.25" (31.8 mm)

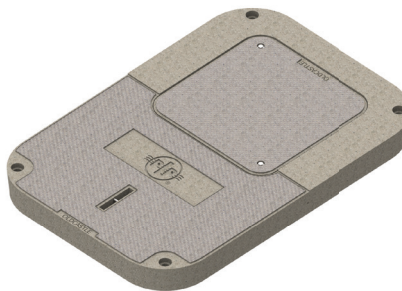


Catalog Number: COYGLC-C4-001
COYOTE GLC Large Base with Cover & No Plug
24" W x 36" L x 24" H (610 x 910 x 610 mm)
For Fiber Optic Cables with Diameters
up to 1.25" (31.8 mm)

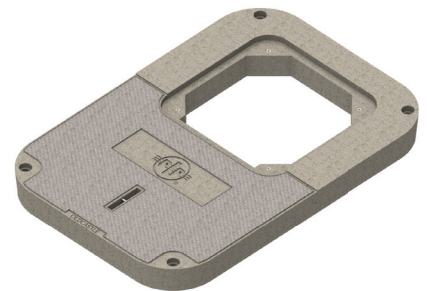
► COYOTE® GLC Base Covers



Catalog Number: 80809781
COYOTE GLC Small Base Cover
NOTE: Can not be used as a plug
for the large base cover



Catalog Number: COYGLC-C4-002
COYOTE GLC Large Base Cover with Plug



Catalog Number: COYGLC-C4-003
COYOTE GLC Large Base Cover without Plug

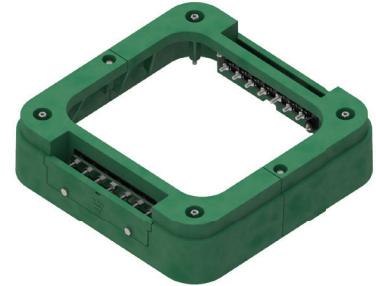
► COYOTE® GLC Spacers



Standard Spacer
Raises the base height by 3"
for adjustment to ground level



Grounding Spacer
Raises the base height by 3" for adjustment to ground
level. Provides 7 external isolated ground connections



Dual Grounding Spacer
Raises the base height by 3" for adjustment to ground
level. Provides 14 external isolated ground connections

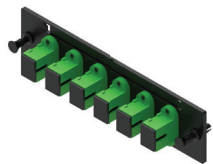
COYOTE GLC Spacers for Small Base

Catalog Number	Description
COYGLC-S1-000	COYOTE GLC Standard Spacer for Small Base – Includes (2) Standard Spacer Halves, (2) Self-Tapping Bolts, and (4) 3.49" L (89 mm) Spacer Fasteners
COYGLC-S2-000	COYOTE GLC Grounding Spacer for Small Base – Includes (1) Standard Spacer Half, (1) Grounding Spacer Half, (1) Ground Stud Mounting Plate, (7) Ground Studs with Fasteners, (1) Bonding Plate, (1) Standard Access Cover, (7) Ground Lead Assemblies, (2) Self-Tapping Bolts, and (4) 3.49" L (89 mm) Spacer Fasteners
COYGLC-S3-000	COYOTE GLC Dual Grounding Spacer for Small Base – Includes (2) Grounding Spacer Halves, (2) Ground Stud Mounting Plate, (14) Ground Studs with Fasteners, (2) Bonding Plate, (2) Standard Access Cover, (14) Ground Lead Assemblies, (2) Self-Tapping Bolts, and (4) 3.49" L (89 mm) Spacer Fasteners

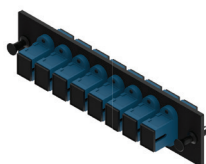
COYOTE GLC Spacers for Large Base

Catalog Number	Description
COYGLC-S4-000	COYOTE GLC Standard Spacer for Large Base – Includes (2) Standard Spacer Halves, (2) Self-Tapping Bolts, and (4) 4.70" L (119 mm) Spacer Fasteners
COYGLC-S5-000	COYOTE GLC Grounding Spacer for Large Base – Includes (1) Standard Spacer Half, (1) Grounding Spacer Half, (1) Ground Stud Mounting Plate, (7) Ground Studs with Fasteners, (1) Bonding Plate, (1) Standard Access Cover, (7) Ground Lead Assemblies, (2) Self-Tapping Bolts, and (4) 4.70" L (119 mm) Spacer Fasteners
COYGLC-S6-000	COYOTE GLC Dual Grounding Spacer for Large Base – Includes (2) Grounding Spacer Halves, (2) Ground Stud Mounting Plate, (14) Ground Studs with Fasteners, (2) Bonding Plate, (2) Standard Access Cover, (14) Ground Lead Assemblies, (2) Self-Tapping Bolts, and (4) 4.70" L (119 mm) Spacer Fasteners

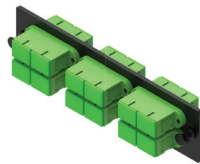
► COYOTE® GLC Accessories for Cross-Connect Applications



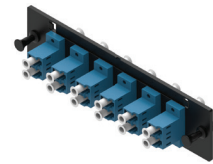
6-Port SC/APC Adapter Module



8-Port SC/UPC Adapter Module



12-Port SC/APC Adapter Module

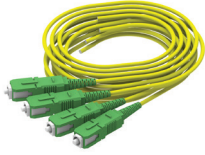


12-Port LC/UPC Adapter Module

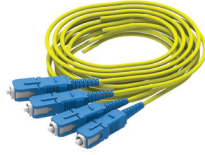
COYOTE Adapter Modules

Catalog Number	Description
6SCAPC	Adapter Kit – Includes (1) 6-Port SC/APC Adapter Module
8SCAPC	Adapter Kit – Includes (1) 8-Port SC/APC Adapter Module
12SMDSCA	Adapter Kit – Includes (1) 12-Port SC/APC Adapter Module
6SMSC	Adapter Kit – Includes (1) 6-Port SC/UPC Adapter Module
8SMSC	Adapter Kit – Includes (1) 8-Port SC/UPC Adapter Module
12SMDSC	Adapter Kit – Includes (1) 12-Port SC/UPC Adapter Module
12SMLCA	Adapter Kit – Includes (1) 12-Port LC/APC Adapter Module
16SMLCA	Adapter Kit – Includes (1) 16-Port LC/APC Adapter Module
24LCAPC	Adapter Kit – Includes (1) 24-Port LC/APC Adapter Module
12SMLC	Adapter Kit – Includes (1) 12-Port LC/UPC Adapter Module
16SMLC	Adapter Kit – Includes (1) 16-Port LC/UPC Adapter Module
24SMLC	Adapter Kit – Includes (1) 24-Port LC/UPC Adapter Module

► COYOTE® GLC Accessories for Cross-Connect Applications



**2 mm Jacketed SC/APC Pigtailed
with Short Connector Boots**



**2 mm Jacketed SC/UPC Pigtailed
with Short Connector Boots**



**2 mm Jacketed LC/APC Pigtailed
with Short Connector Boots**



**2 mm Jacketed LC/UPC Pigtailed
with Short Connector Boots**

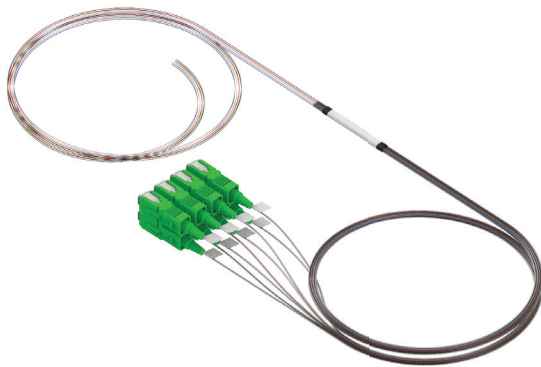
COYOTE 2 mm Jacketed Fiber Pigtail Kits – Short Boot Connectors

Catalog Number	Description
COYTRM-2PK-SCA-SB	Pigtail Kit – Includes (2) 2 mm SC/APC Jacketed Fiber Pigtailed with Short Boot Connectors, 2 meters Long
COYTRM-3PK-SCA-SB	Pigtail Kit – Includes (3) 2 mm SC/APC Jacketed Fiber Pigtailed with Short Boot Connectors, 2 meters Long
COYTRM-4PK-SCA-SB	Pigtail Kit – Includes (4) 2 mm SC/APC Jacketed Fiber Pigtailed with Short Boot Connectors, 2 meters Long
COYTRM-2PK-SCU-SB	Pigtail Kit – Includes (2) 2 mm SC/UPC Jacketed Fiber Pigtailed with Short Boot Connectors, 2 meters Long
COYTRM-3PK-SCU -SB	Pigtail Kit – Includes (3) 2 mm SC/UPC Jacketed Fiber Pigtailed with Short Boot Connectors, 2 meters Long
COYTRM-4PK-SCU-SB	Pigtail Kit – Includes (4) 2 mm SC/UPC Jacketed Fiber Pigtailed with Short Boot Connectors, 2 meters Long
COYTRM-4PK-LCA-SB	Pigtail Kit – Includes (4) 2 mm LC/APC Jacketed Fiber Pigtailed with Short Boot Connectors, 2 meters Long
COYTRM-4PK-LCU-SB	Pigtail Kit – Includes (4) 2 mm LC/UPC Jacketed Fiber Pigtailed with Short Boot Connectors, 2 meters Long

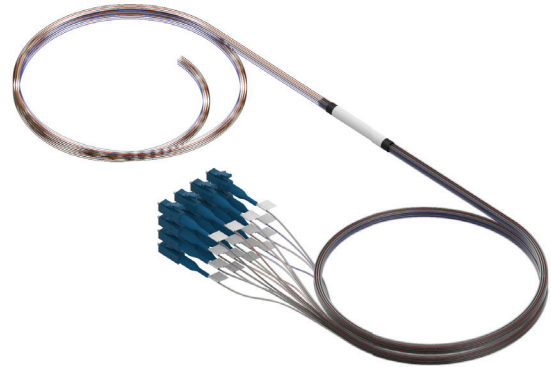
COYOTE 2 mm Jacketed Fiber Pigtail Kits – Standard Boot Connectors

Catalog Number	Description
COYTRM-2PK-SCA	Pigtail Kit – Includes (2) 2 mm SC/APC Jacketed Fiber Pigtailed with Standard Boot Connectors, 2 meters Long
COYTRM-3PK-SCA	Pigtail Kit – Includes (3) 2 mm SC/APC Jacketed Fiber Pigtailed with Standard Boot Connectors, 2 meters Long
COYTRM-4PK-SCA	Pigtail Kit – Includes (4) 2 mm SC/APC Jacketed Fiber Pigtailed with Standard Boot Connectors, 2 meters Long
COYTRM-2PK-SCU	Pigtail Kit – Includes (2) 2 mm SC/UPC Jacketed Fiber Pigtailed with Standard Boot Connectors, 2 meters Long
COYTRM-3PK-SCU	Pigtail Kit – Includes (3) 2 mm SC/UPC Jacketed Fiber Pigtailed with Standard Boot Connectors, 2 meters Long
COYTRM-4PK-SCU	Pigtail Kit – Includes (4) 2 mm SC/UPC Jacketed Fiber Pigtailed with Standard Boot Connectors, 2 meters Long
COYTRM-4PK-LCA	Pigtail Kit – Includes (4) 2 mm LC/APC Jacketed Fiber Pigtailed with Standard Boot Connectors, 2 meters Long
COYTRM-4PK-LCU	Pigtail Kit – Includes (4) 2 mm LC/UPC Jacketed Fiber Pigtailed with Standard Boot Connectors, 2 meters Long

► COYOTE® GLC Accessories for Cross-Connect Applications



8 Fiber SC/APC GLC Pigtail Bundle

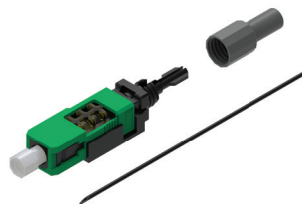


16 Fiber LC/UPC GLC Pigtail Bundle

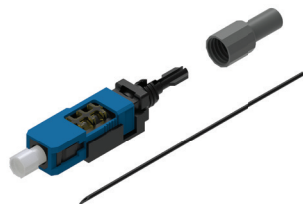
COYOTE GLC Pigtail Bundles

Catalog Number	Description
COYGLC-4FB-SCA	GLC Pigtail Bundle – Includes (4) SC/APC 900 μ m Pigtails with 24" Output Legs
COYGLC-8FB-SCA	GLC Pigtail Bundle – Includes (8) SC/APC 900 μ m Pigtails with 24" Output Legs
COYGLC-12FB-SCA	GLC Pigtail Bundle – Includes (12) SC/APC 900 μ m Pigtails with 24" Output Legs
COYGLC-16FB-SCA	GLC Pigtail Bundle – Includes (16) SC/APC 900 μ m Pigtails with 24" Output Legs
COYGLC-32FB-SCA	GLC Pigtail Bundle – Includes (32) SC/APC 900 μ m Pigtails with 24" Output Legs
COYGLC-4FB-SCU	GLC Pigtail Bundle – Includes (4) SC/UPC 900 μ m Pigtails with 24" Output Legs
COYGLC-8FB-SCU	GLC Pigtail Bundle – Includes (8) SC/UPC 900 μ m Pigtails with 24" Output Legs
COYGLC-12FB-SCU	GLC Pigtail Bundle – Includes (12) SC/UPC 900 μ m Pigtails with 24" Output Legs
COYGLC-16FB-SCU	GLC Pigtail Bundle – Includes (16) SC/UPC 900 μ m Pigtails with 24" Output Legs
COYGLC-32FB-SCU	GLC Pigtail Bundle – Includes (32) SC/UPC 900 μ m Pigtails with 24" Output Legs
COYGLC-4FB-LCA	GLC Pigtail Bundle – Includes (4) LC/APC 900 μ m Pigtails with 24" Output Legs
COYGLC-8FB-LCA	GLC Pigtail Bundle – Includes (8) LC/APC 900 μ m Pigtails with 24" Output Legs
COYGLC-12FB-LCA	GLC Pigtail Bundle – Includes (12) LC/APC 900 μ m Pigtails with 24" Output Legs
COYGLC-16FB-LCA	GLC Pigtail Bundle – Includes (16) LC/APC 900 μ m Pigtails with 24" Output Legs
COYGLC-32FB-LCA	GLC Pigtail Bundle – Includes (32) LC/APC 900 μ m Pigtails with 24" Output Legs
COYGLC-4FB-LCU	GLC Pigtail Bundle – Includes (4) LC/UPC 900 μ m Pigtails with 24" Output Legs
COYGLC-8FB-LCU	GLC Pigtail Bundle – Includes (8) LC/UPC 900 μ m Pigtails with 24" Output Legs
COYGLC-12FB-LCU	GLC Pigtail Bundle – Includes (12) LC/UPC 900 μ m Pigtails with 24" Output Legs
COYGLC-16FB-LCU	GLC Pigtail Bundle – Includes (16) LC/UPC 900 μ m Pigtails with 24" Output Legs
COYGLC-32FB-LCU	GLC Pigtail Bundle – Includes (32) LC/UPC 900 μ m Pigtails with 24" Output Legs

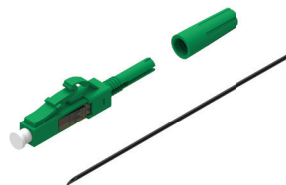
► COYOTE® Field Installable Connectors



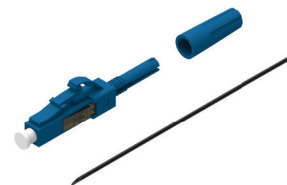
**SC/APC Field
Installable Connectors**



**SC/APC Field
Installable Connectors**



**LC/APC Field
Installable Connectors**



**LC/UPC Field
Installable Connectors**

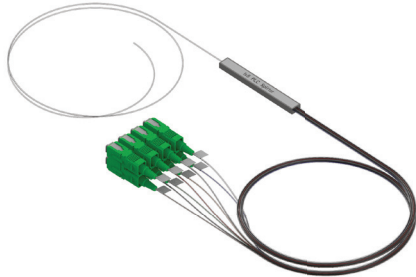
COYOTE Field Installable Connector Kits for 250µm and 900µm Cable Types

Catalog Number	Description
80813501	Field Installable Connector Kit Includes – (6) SCAPC Field Installable Connectors
80813502	Field Installable Connector Kit Includes – (12) SCAPC Field Installable Connectors
80813503	Field Installable Connector Kit Includes – (6) SCUPC Field Installable Connectors
80813504	Field Installable Connector Kit Includes – (12) SCUPC Field Installable Connectors
80813505	Field Installable Connector Kit Includes – (6) LCAPC Field Installable Connectors
80813506	Field Installable Connector Kit Includes – (12) LCAPC Field Installable Connectors
80813507	Field Installable Connector Kit Includes – (6) LCUPC Field Installable Connectors
80813508	Field Installable Connector Kit Includes – (12) LCUPC Field Installable Connectors
FAC-KIT	Field Installation Kit Includes – (1) Carrying Bag, (1) Precision Cleaver, (1) Pen Style Cleaner for SC Connectors, (1) Pen Style Cleaner for LC Connectors, (1) Fiber Stripper, (1) KEVLAR® Scissor, (1) Pack of Alcohol Wipes, (10) LCUPC 900 um Connectors, (10) SCUPC 900um Connectors and Instruction Sheet

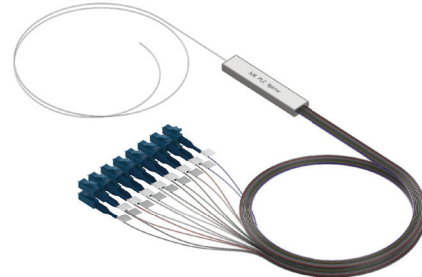
Specifications: Field Installable Connectors

Item	Performance
Standard	TIA / EIA 604-3 (SC) and TIA / EIA 604-10 (LC)
Insertion Loss	Typ. 0.3dB / Max. 0.5dB
Return Loss	Typ. 50dB / Max. 55dB (PC) Typ. 55dB / Max. 60dB (APC)
Endurance	≤ 0.3dB, 500 times reconnection
Tension	≤ 0.2dB change, 3.0kg
Temperature Change	≤ 0.3dB change, 21 times / -40°C~ +75°C

► COYOTE® GLC Accessories for Cross-Connect Applications



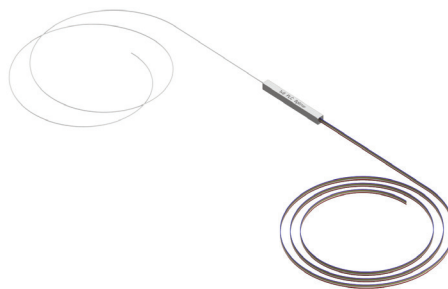
1x8 SC/APC PLC Pre-Connectorized Splitter



1x16 LC/UPC PLC Pre-Connectorized Splitter

COYOTE GLC Pre-Connectorized Splitters

Catalog Number	Description
COYGLC-1X8-SCA	Pre-Connectorized Splitter – 1x8 SC/APC with 24" Output Legs
COYGLC-1X16-SCA	Pre-Connectorized Splitter – 1x16 SC/APC with 24" Output Legs
COYGLC-1X32-SCA	Pre-Connectorized Splitter – 1x32 SC/APC with 24" Output Legs
COYGLC-1X8-SCU	Pre-Connectorized Splitter – 1x8 SC/UPC with 24" Output Legs
COYGLC-1X16-SCU	Pre-Connectorized Splitter – 1x16 SC/UPC with 24" Output Legs
COYGLC-1X32-SCU	Pre-Connectorized Splitter – 1x32 SC/UPC with 24" Output Legs
COYGLC-1X8-LCA	Pre-Connectorized Splitter – 1x8 LC/APC with 24" Output Legs
COYGLC-1X16-LCA	Pre-Connectorized Splitter – 1x16 LC/APC with 24" Output Legs
COYGLC-1X32-LCA	Pre-Connectorized Splitter – 1x32 LC/APC with 24" Output Legs
COYGLC-1X8-LCU	Pre-Connectorized Splitter – 1x8 LC/UPC with 24" Output Legs
COYGLC-1X16-LCU	Pre-Connectorized Splitter – 1x16 LC/UPC with 24" Output Legs
COYGLC-1X32-LCU	Pre-Connectorized Splitter – 1x32 LC/UPC with 24" Output Legs



PLC Bare Fiber Splitter

COYOTE Bare Fiber Splitters

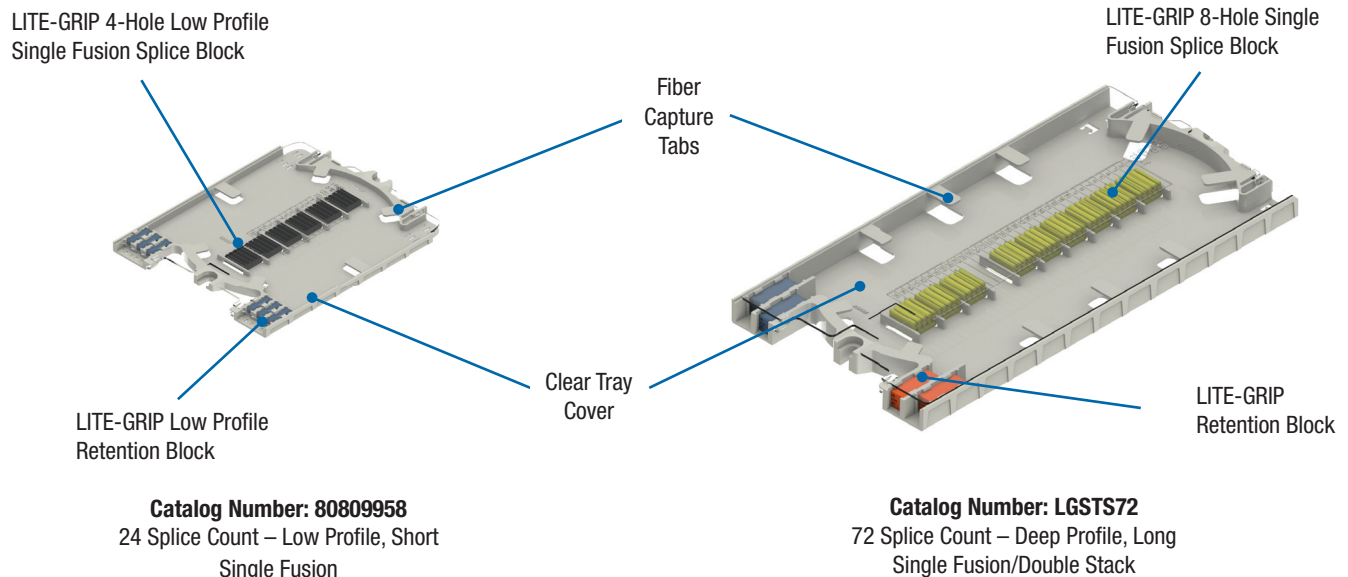
Catalog Number	Description
COYSP1X2	COYOTE Bare Fiber Splitter – 1x2
COYSP1X4	COYOTE Bare Fiber Splitter – 1x4
COYSP1X8	COYOTE Bare Fiber Splitter – 1x8
COYSP1X16	COYOTE Bare Fiber Splitter – 1x16
COYSP1X32	COYOTE Bare Fiber Splitter – 1x32

► COYOTE® LITE-GRIP® Splice Trays

The COYOTE Splice Trays with LITE-GRIP technology are specifically engineered to meet the challenging space requirements of the next generation of fiber networks by permitting large bend radii in a small package. The LITE-GRIP technology is designed to improve fiber management within the confines of the splice tray by providing a superior method for securing splice protectors, restraining fiber cable entering the splice tray, and organizing fiber. The unique component design makes installation and adjustment easier to manage, thus minimizing the potential for fiber damage while reducing labor time and cost.

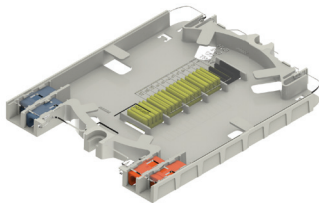
Features and Benefits

- LITE-GRIP Retention Sleeves are designed to grip buffer tubes, pigtails, or transport tubing without over compression during installation and eliminates the need for tie wraps, reducing installation time.
- LITE-GRIP Splice Blocks are produced with an advanced grip material designed to prevent splice movement during handling or vibration while increasing splicing density within the tray.
- LITE-GRIP Splice Blocks are available to accept single fusion, mass fusion or mechanical splice protectors and can be easily installed or removed.
- LITE-GRIP Splice Blocks for mass fusion are sized to accept PLC splitter components. Consult your PLP representative for more details.
- Short LITE-GRIP Trays are used in the COYOTE 9.5" x 17" GLC Dome Closure and long LITE-GRIP Trays are used in the COYOTE 9.5" x 28" GLC Dome Closure.

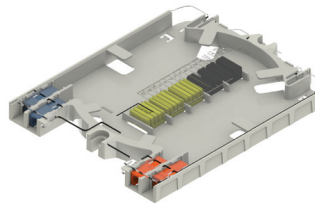


Splice Trays for the COYOTE GLC Dome Closures will come with a tray cover, felt tape, splice blocks, and LITE-GRIP® retention sleeves.

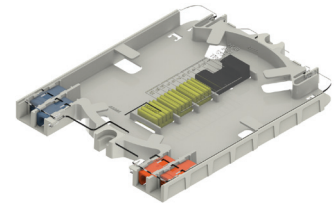
► COYOTE® LITE-GRIP® Short Splitter Tray Kits



Catalog Number: LGSTS-SPLIT
COYOTE LITE-GRIP Short Deep Profile Splice Tray Kit for Single Fusion Splices, Bare Fiber Splitters, & 1x4 Pre-Connectorized Splitters (32 Splice Count)

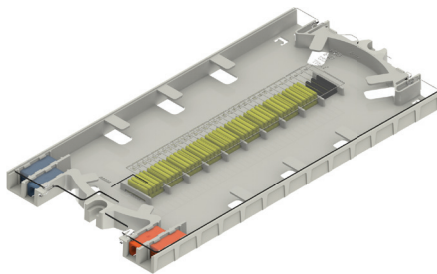


Catalog Number: LGSTS1x816PC
COYOTE LITE-GRIP Short Deep Profile Splice Tray Kit for Single Fusion Splices, 1x8 Pre-Connectorized Splitters, & 1x16 Pre-Connectorized Splitters (32 Splice Count)

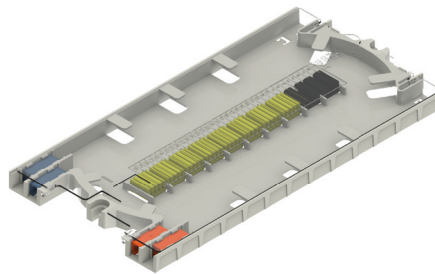


Catalog Number: LGSTS1x32PC
COYOTE LITE-GRIP Short Deep Profile Splice Tray Kit for Single Fusion Splices & 1x32 Pre-Connectorized Splitters (24 Splice Count)

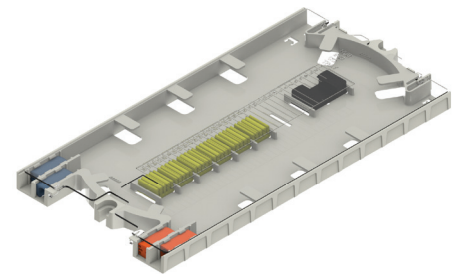
► COYOTE® LITE-GRIP® Long Splitter Tray Kits



Catalog Number: LGSTL-SPLIT
COYOTE LITE-GRIP Long Deep Profile Splice Tray Kit for Single Fusion Splices, Bare Fiber Splitters, & 1x4 Pre-Connectorized Splitters (72 Splice Count)



Catalog Number: 800013831
COYOTE LITE-GRIP Long Deep Profile Splice Tray Kit for Single Fusion Splices, 1x8 Pre-Connectorized Splitters, & 1x16 Pre-Connectorized Splitters (64 Splice Count)



Catalog Number: LGSTL1x32PC
COYOTE LITE-GRIP Long Deep Profile Splice Tray Kit for Single Fusion Splices & 1x32 Pre-Connectorized Splitters (48 Splice Count)

COYOTE GLC Splice Trays and Accessories

Catalog Number	Description
80809958	Splice Tray, COYOTE LITE-GRIP® Short, Low Profile, 24 CT., Single Fusion
80813152	Splice Tray, COYOTE LITE-GRIP Short, Low Profile, 36 CT., Single Fusion
80808945	Splice Tray, COYOTE LITE-GRIP Short, Deep Profile, 40 CT., Single Fusion
LGSTR144	Splice Tray, COYOTE LITE-GRIP Short, Deep Profile, 144 CT., Mass Fusion
80810086	Splice Tray, COYOTE LITE-GRIP Long, Standard Profile, 36 CT., Single Fusion
LGSTS72	Splice Tray, COYOTE LITE-GRIP Long, Deep Profile, 72 CT., Single Fusion
LGSTR216	Splice Tray, COYOTE LITE-GRIP Long, Deep Profile, 216 CT., Mass Fusion
8004160	Heat Shrink Splice Protector Kit – Includes (50) 40 mm Mass Fusion
8004095	Heat Shrink Splice Protector Kit – Includes (50) 40 mm Single Fusion
8003717	Heat Shrink Splice Protector Kit – Includes (50) 60 mm Single Fusion
80808613	Express Fiber Storage Ring for Deep Profile LITE-GRIP Splice Trays

► COYOTE® GLC Accessories



OptiTap® Adapter



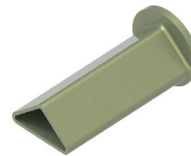
Hardened Adapter Installation Tool

Hardened Adapter Accessories

Catalog Number	Description
80807972	Hardened Adapter Installation Tool
8003715	OptiTap Adapter Kit – Includes (1) OptiTap Adapter and (1) Installation Tool
8004115	Bulk Pack of OptiTap Adapters – Includes (10) OptiTap Adapters
8003724	Port Plug Kit – Includes (1) Port Plug and (1) Installation Tool
8004060	Bulk Pack of Port Plugs – Includes (10) Port Plugs



Retention Stake with Anchor Plate



Retention Stake Driver Cap

COYOTE GLC Accessories

Catalog Number	Description
80809788	Retention Stake with Anchor Plate for Small Base 42" (1066 mm)
80809791	Retention Stake Driver Cap
80803989	Shield Connector
80809205	Strength Member Bracket Kit – Includes (2) Short L-Brackets
80808651	Strength Member Bracket Kit – Includes (4) Long L-Brackets
80811037	4-Port Cable Retention Bobbin Kit
80811036	6-Port Drop Cable Retention Bobbin Kit
80812928	6/8-Port Drop Cable Retention Bobbin Kit

OptiTap® is a registered trademark of Corning Cable Systems.