

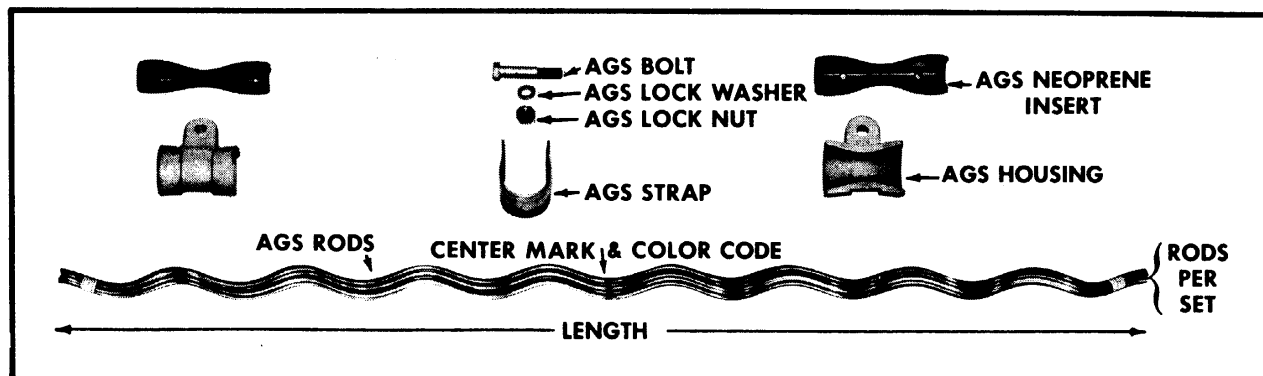
APPLICATION PROCEDURE & SAFETY CONSIDERATIONS **PREFORMED LINE PRODUCTS**

ARMOR-GRIP® Suspension



NOVEMBER 1996

Completely read and understand this procedure before applying product. Special attention should be given to the Safety Considerations located on the last page. We advise the reader to review those considerations now, and then again during the general review of this procedure.



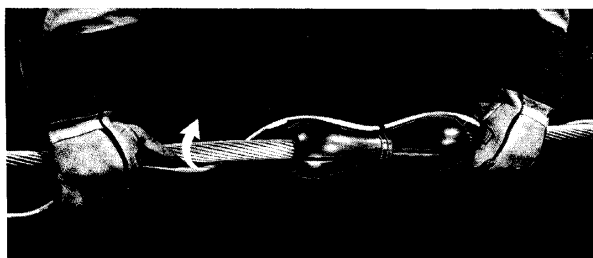
1. ARMOR-GRIP® Suspension nomenclature.



2. Plumb insulator string and mark conductor at center of sheave. Use felt marking pen or lumber crayon; do not scratch conductor. Lift the conductor beyond the ends of the rods to allow enough clearance for the application.

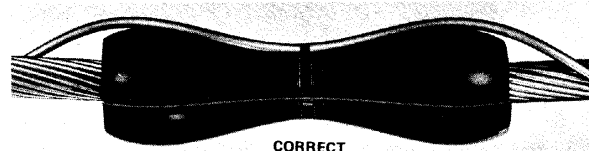


3. Align center marks of AGS Neoprene Inserts with center mark on conductor and tape in place with a thin layer of tape.



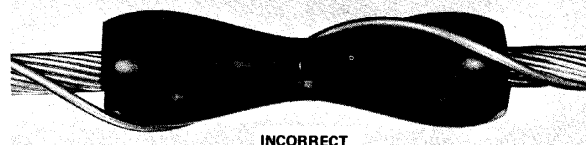
4. Center the AGS Rod on the insert. Apply sufficient length of rod (approximately two wraps) so that it will stay on the conductor.

DO NOT DISTORT RODS.



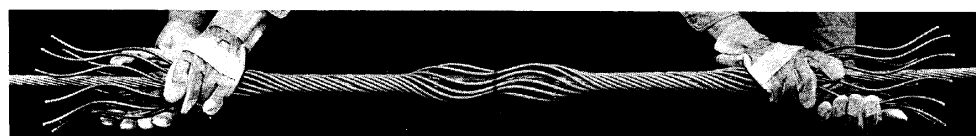
CORRECT

5. A. Proper application of one rod. The curvature of the rod follows the contour of the neoprene insert. MAKE CERTAIN THAT THERE IS NO SPACE BETWEEN THE ROD AND INSERT.

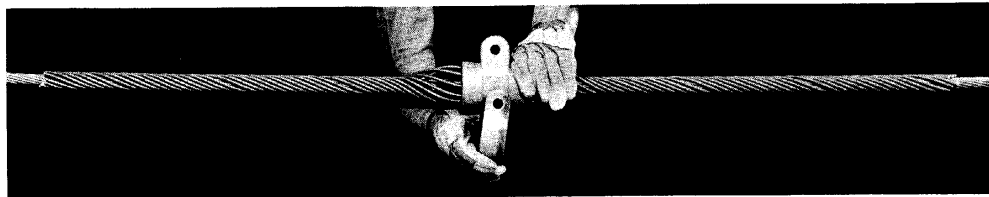


INCORRECT

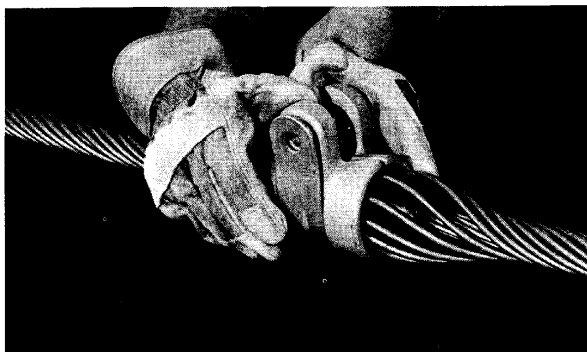
- B. Improper application of one rod. DO NOT WRAP ROD AROUND THE NEOPRENE INSERT AS SHOWN.



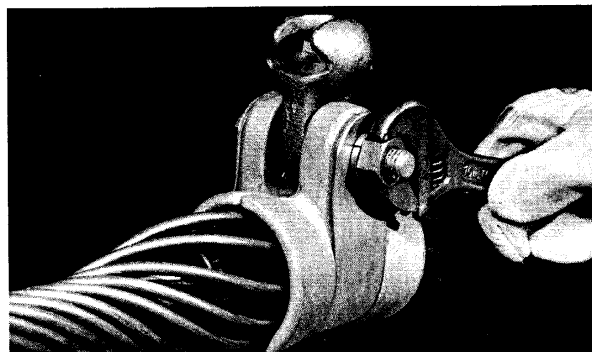
6. Apply all remaining rods evenly around neoprene insert. MAKE SURE THAT NO RODS ARE CROSSED. Each AGS Rod can be applied completely, or all rods can be applied partially as shown above. Make sure that all rod ends are snapped into place.



7. Place the two halves of the AGS Housing on either side of the center assembly. Slide the AGS Strap into position and with the heel of the hand tap firmly into place.



8. Spread the ears of the housing and tap strap into place again. This will align the holes so that the bolt may be inserted easily.



9. Tighten the nut until the lock washer becomes almost flat. DO NOT OVER-TIGHTEN. DO NOT SQUEEZE EARS OF AGS HOUSING AGAINST FITTING.

GENERAL NOTES

1. ARMOR-GRIP® Suspension Rods are precision devices. To insure a tight assembly, they should be stored and handled carefully. To prevent distortion and damage, they should be installed as illustrated.
2. ARMOR-GRIP® Suspension Rods are NOT interchangeable with standard Armor Rods.
3. On some sizes of ARMOR-GRIP® Suspension there will appear to be enough gap between rods to apply an additional rod... BUT... all AGS Rods are packed in sets. Apply only the number of rods in the set.
4. Maximum line angle of deviation:
 - a. The single support ARMOR-GRIP® Suspension may be used on line angles up through 30°.
 - b. Use the double support ARMOR-GRIP® Suspension for line angles between 30° and 60°. Consult the Factory for an engineering recommendation regarding this application.
5. ARMOR-GRIP® Suspension Rods are factory matched; do not intermix rods from different sets.
6. Do not reverse rods end to end in any one set; that is, do not flip end over end.
7. The alignment of the rods should be maintained within 2 inches for voltages of 230 KV and lower; for 345 KV and above, the alignment of the ends of the rods should be maintained within ¾-inch.

SAFETY CONSIDERATIONS

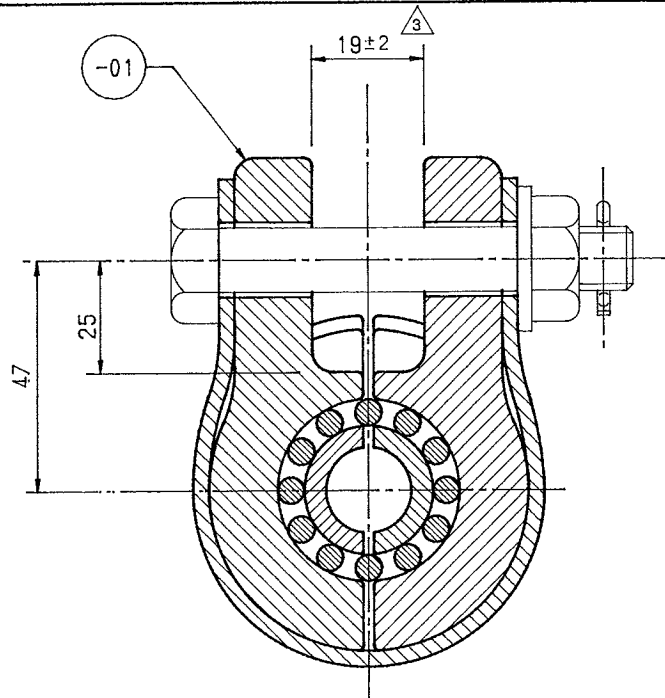
1. This application procedure is not intended to supersede any company construction or safety standards. This procedure is offered only to illustrate safe application for the individual. **CAUTION: FAILURE TO FOLLOW THESE PROCEDURES AND RESTRICTIONS MAY RESULT IN PERSONAL INJURY OR DEATH.**
2. The rods of this product are intended for a single (one-time) use and for the specified application. However, the hardware components may be reused as desired if in good condition. **CAUTION: DO NOT REUSE RODS OR MODIFY THIS PRODUCT UNDER ANY CIRCUMSTANCES.**
3. This product is intended for use by trained craftspeople only.
4. This product **SHOULD NOT BE USED** by anyone who is not familiar with and trained in the use of it.
5. When working in the area of energized lines with this product, **EXTRA CARE** should be taken to prevent accidental electrical contact.
6. For **PROPER PERFORMANCE AND PERSONAL SAFETY** be sure to select the proper size PREFORMED™ product before application.
7. PREFORMED products are precision devices. To insure proper performance, they should be stored in cartons under cover and handled carefully.

PREFORMED LINE PRODUCTS 

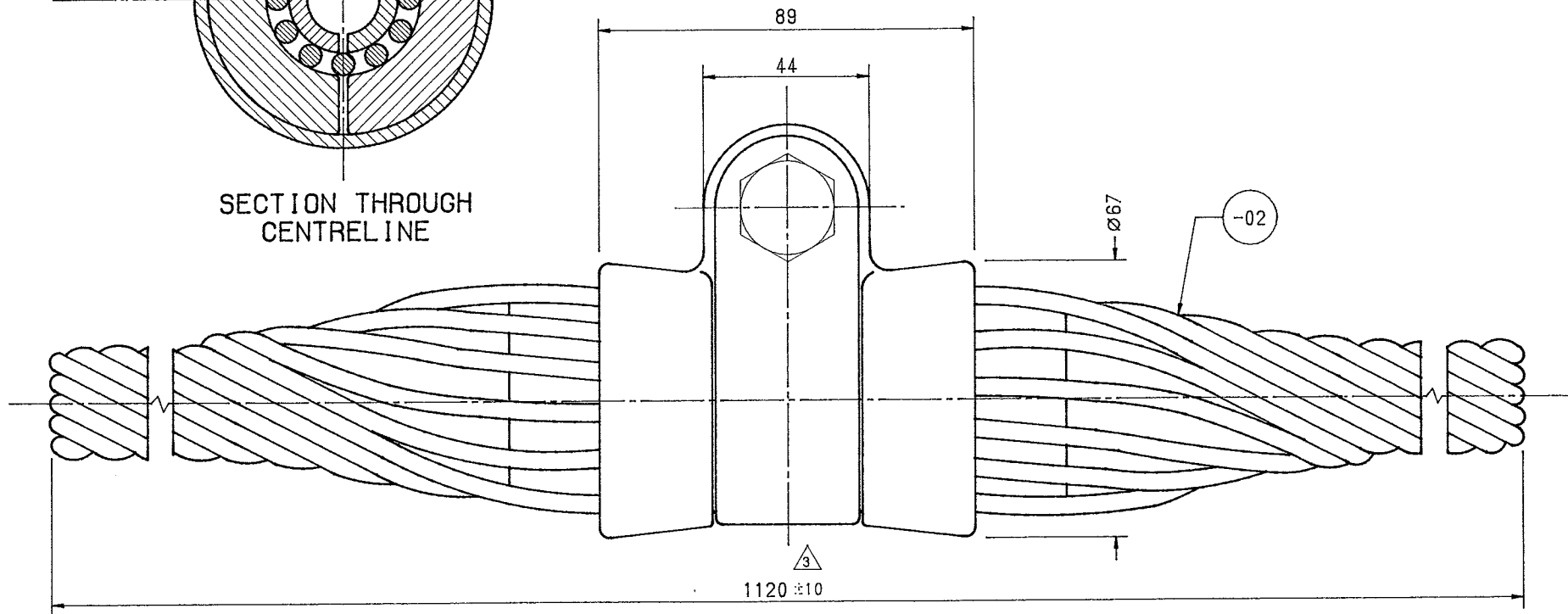
P.O. Box 91129, Cleveland, Ohio 44101 • 440.461.5200 • www.preformed.com • e-mail: inquiries@preformed.com

SP2062-1

Litho in U.S.A.



SECTION THROUGH
CENTRELINE



HSU1430

CATALOGUE NUMBER

A3 DRAWING NO.

HSU1430

QTY	NOTE	ITEM	MATERIAL No.	DESCRIPTION
1	3	-01	HSU5003	HELIFORM SUSPENSION UNIT HOUSING ASSY.
1		-02	AHR1430	HELIFORM SUSPENSION UNIT ROD SET A1.

NOTICE

THIS DOCUMENT AND THE INFORMATION HEREON IS THE PROPERTY OF ALM-DULMISON OR ITS SUCCESSORS. IT MUST NOT BE USED IN ANY WAY DETRIMENTAL TO OUR INTERESTS NOR DISCLOSED TO A THIRD PARTY WITHOUT THE WRITTEN CONSENT OF ALM-DULMISON.

FORM A3N-1SB

REFERENCE

ISSUES
1. E.C.D. 4898
2. M.S. 19, 1120
3. M.S. 1120/100, 811
4. M.S. 1120/100, 811
5. M.S. 1120/100, 811
6. M.S. 1120/100, 811
7. M.S. 1120/100, 811
8. M.S. 1120/100, 811
9. M.S. 1120/100, 811
10. M.S. 1120/100, 811
11. M.S. 1120/100, 811
12. M.S. 1120/100, 811
13. M.S. 1120/100, 811
14. M.S. 1120/100, 811
15. M.S. 1120/100, 811
16. M.S. 1120/100, 811
17. M.S. 1120/100, 811
18. M.S. 1120/100, 811
19. M.S. 1120/100, 811
20. M.S. 1120/100, 811
21. M.S. 1120/100, 811
22. M.S. 1120/100, 811
23. M.S. 1120/100, 811
24. M.S. 1120/100, 811
25. M.S. 1120/100, 811
26. M.S. 1120/100, 811
27. M.S. 1120/100, 811
28. M.S. 1120/100, 811
29. M.S. 1120/100, 811
30. M.S. 1120/100, 811
31. M.S. 1120/100, 811
32. M.S. 1120/100, 811
33. M.S. 1120/100, 811
34. M.S. 1120/100, 811
35. M.S. 1120/100, 811
36. M.S. 1120/100, 811
37. M.S. 1120/100, 811
38. M.S. 1120/100, 811
39. M.S. 1120/100, 811
40. M.S. 1120/100, 811
41. M.S. 1120/100, 811
42. M.S. 1120/100, 811
43. M.S. 1120/100, 811
44. M.S. 1120/100, 811
45. M.S. 1120/100, 811
46. M.S. 1120/100, 811
47. M.S. 1120/100, 811
48. M.S. 1120/100, 811
49. M.S. 1120/100, 811
50. M.S. 1120/100, 811
51. M.S. 1120/100, 811
52. M.S. 1120/100, 811
53. M.S. 1120/100, 811
54. M.S. 1120/100, 811
55. M.S. 1120/100, 811
56. M.S. 1120/100, 811
57. M.S. 1120/100, 811
58. M.S. 1120/100, 811
59. M.S. 1120/100, 811
60. M.S. 1120/100, 811
61. M.S. 1120/100, 811
62. M.S. 1120/100, 811
63. M.S. 1120/100, 811
64. M.S. 1120/100, 811
65. M.S. 1120/100, 811
66. M.S. 1120/100, 811
67. M.S. 1120/100, 811
68. M.S. 1120/100, 811
69. M.S. 1120/100, 811
70. M.S. 1120/100, 811
71. M.S. 1120/100, 811
72. M.S. 1120/100, 811
73. M.S. 1120/100, 811
74. M.S. 1120/100, 811
75. M.S. 1120/100, 811
76. M.S. 1120/100, 811
77. M.S. 1120/100, 811
78. M.S. 1120/100, 811
79. M.S. 1120/100, 811
80. M.S. 1120/100, 811
81. M.S. 1120/100, 811
82. M.S. 1120/100, 811
83. M.S. 1120/100, 811
84. M.S. 1120/100, 811
85. M.S. 1120/100, 811
86. M.S. 1120/100, 811
87. M.S. 1120/100, 811
88. M.S. 1120/100, 811
89. M.S. 1120/100, 811
90. M.S. 1120/100, 811
91. M.S. 1120/100, 811
92. M.S. 1120/100, 811
93. M.S. 1120/100, 811
94. M.S. 1120/100, 811
95. M.S. 1120/100, 811
96. M.S. 1120/100, 811
97. M.S. 1120/100, 811
98. M.S. 1120/100, 811
99. M.S. 1120/100, 811
100. M.S. 1120/100, 811

HSU1430

A3 DWG. NO.

IMPLIED TOLERANCES

DO NOT WORK TO DIM. MARKED REF

HOLES: DIAMETERS ± 0.5
FOR DIMENSIONS UP TO 40mm $\pm 1mm$
FOR DIMENSIONS OVER 40mm $\pm 3mm$
UP TO A MAX OF $\pm 5mm$

NOTE: REMOVE BURRS & SHARP CORNERS

HELIFORM SUSPENSION UNIT ASSY
CONDUCTOR RANGE 13.80-14.59
7/4.75 AAC, 6/4.75+7/1.60 ACSR

ALM-DULMISON
PO Box 156 WYONG N.S.W. 2259
Ph. 043 531211 Fax 043 532470

DRAWN	D.W.	DATE
112	13-3-92	
CHECKED	APPVD	SCALE
		N.T.S.
CAD	A3	DWG. NO.
112	HSU1430	

PLP (AUSTRALIA) PTY LTD
ENGINEERING DEPARTMENT

DATE – 31TH JANUARY, 2018

TYPE TEST REPORT NO. T9792
TEST REFERENCE NO. T18/11
PAGE 1 of 6

MECHANICAL STRENGTH TYPE TEST

ON:

HELIFORM SUSPENSION UNIT ASSEMBLY
M20 BOLT RANGE 13.80-14.59mm

PART NO: D-HSU1430

Testing Officer:  (Jose-Elmer Simeon)

Approved by:  (Florian de Celis, Compliance Manager)

Date Approved: 1/02/2018

190 Power Street Glendenning NSW 2761 AUSTRALIA
Phone: 8805 0000, INT'L (612) 8805 0000
Fax: 8805 0090, INT'L (612) 8805 0090

THE QUALITY SYSTEM OF PLP AUSTRALIA HAS BEEN CERTIFIED TO
AS/NZS ISO9001:2015 BY GLOBAL MARK REGISTER QUALITY ASSURANCE

Fittings and Accessories for Power and Communication.
Engineered Plastics and Extrusions.
Data Communication Products.