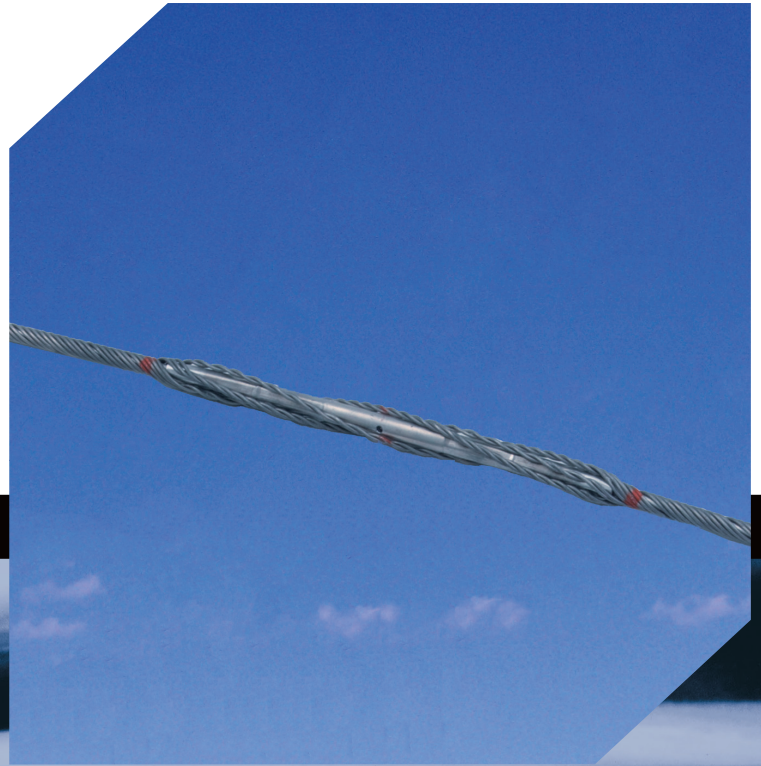




PREFORMED LINE PRODUCTS
The connection you can count on.


Splice Shunt/Dead-end Shunt for Transmission



 COMMUNICATIONS

 ENERGY

 SPECIAL INDUSTRIES

 SOLAR

PLP® Transmission Products

Splice Shunt/Dead-end Shunt

Description

The Splice Shunt is designed to restore up to 100% electrical conductivity and a portion of the mechanical strength to the compression splices that are found to be excessively hot or failing during thermal line inspections.

Mechanically, the Splice Shunt is designed to restore 100% strength of the aluminum strands of ACSR conductor and about 10% strength of the steel core. For AAC and AAAC conductors, the mechanical strength is restored to 100%. The Dead-end Shunt does not restore any mechanical strength.

Electrically, the Splice Shunt and Dead-end Shunt are designed to restore up to 100% strength of the conductor's ampacity.

Material

Both shunts use an aluminum alloy material with a conductive grit to achieve superior mechanical and electrical properties.

Application

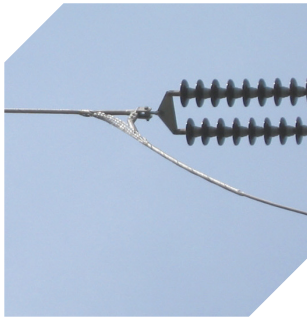
The Splice Shunt is applied directly over the compression splice and over the conductor for a specific distance on either side of the splice. The Dead-end Shunt is applied to the conductor on the dead-end and jumper sides. All color code marks need to align to ensure proper installation.

Splice Shunts can also be applied over compression splices for pulling in the new conductor with the old conductor for re-conductoring.

Proper conductor preparation is required to ensure positive electrical connection. Wire brushing of the conductor and the application of a quality compatible inhibitor is required.

Features

- Installs by hand or with hot sticks
- Lightweight
- Installs directly over compression splices or compression dead-ends
- Restores conductivity to all-aluminum, aluminum alloy and ACSR conductors



Transmission Splice Shunts							
PLP Catalog Number	Conductor Range (mm)	Nominal Conductor Size	Wire Size	Length (mm)	Splice Length (mm)	Color Code	EHV
SDES-0001	0.701 - 0.729 (17.80 - 18.51)	397.5 19 str AAC	0.250	108 (2743)	20 (508)	Green	
SDES-0002	0.730 - 0.760 (18.52 - 19.31)	336.4 30/7 ACSR	0.250	123 (3124)	30 (762)	Black	
SDES-0003	0.761 - 0.792 (19.32 - 20.11)	397.5 kcmil 26/7 ACSR	0.250	125 (3175)	30 (762)	Purple	
SDES-0004	0.793 - 0.825 (20.14 - 20.95)	477 kcmil 18/1 ACSR	0.250	122 (3098)	30 (762)	Red	
SDES-0005	0.826 - 0.850 (20.98 - 21.59)	477 kcmil 24/7 ACSR	0.250	138 (3505)	30 (762)	Black	
SDES-0006	0.851 - 0.886 (21.61 - 22.50)	477 kcmil 26/7 ACSR	0.250	138 (3505)	32 (812)	Black	
SDES-0007	0.887 - 0.929 (22.52 - 23.59)	556.5 kcmil 26/7 ACSR	0.310	145 (3683)	32 (812)	Orange	
SDES-0008	0.918 - 0.968 (23.31 - 24.58)	605 kcmil 24/7 ACSR	0.310	148 (3759)	32 (812)	White	
SDES-0009	0.969 - 1.008 (24.61 - 25.60)	636 kcmil 26/7 ACSR	0.310	151 (3835)	34 (863)	Yellow	
SDES-0010	1.009 - 1.050 (25.62 - 26.67)	795 kcmil 36/1 ACSR	0.365	168 (4267)	34 (863)	Green	
SDES-0011	1.051 - 1.091 (26.69 - 27.71)	795 kcmil 45/7 ACSR	0.365	187 (4749)	34 (863)	Black	
SDES-0012	1.092 - 1.136 (27.73 - 28.85)	795 kcmil 26/7 ACSR	0.365	183 (4648)	40 (1016)	Green	Y
SDES-0013	1.137 - 1.183 (28.87 - 30.04)	954 kcmil 45/7 ACSR	0.365	187 (4749)	40 (1016)	Red	Y
SDES-0014	1.184 - 1.232 (30.07 - 31.29)	1033.5 kcmil 45/7 ACSR	0.436	216 (5486)	42 (1066)	Blue	Y
SDES-0015	1.233 - 1.299 (31.31 - 32.99)	1033.5 kcmil 54/7 ACSR	0.436	218 (5537)	42 (1066)	Green	Y
SDES-0016	1.300 - 1.353 (33.02 - 34.36)	1192 kcmil 45/7 ACSR	0.436	220 (5588)	45 (1143)	Yellow	Y
SDES-0017	1.382 - 1.387 (35.10 - 35.22)	1272 kcmil 54/19 ACSR	0.436	237 (6019)	45 (1143)	Brown	Y
SDES-0018	1.410 - 1.467 (35.81 - 37.26)	1600 AAAC	0.436	219 (5562)	45 (1143)	Yellow	Y
SDES-0019	1.468 - 1.528 (37.28 - 38.81)	1510.5 kcmil 54/19 ACSR	0.436	228 (5791)	45 (1143)	White	Y
SDES-0020	1.504 - 1.545 (38.20 - 39.24)	1590 kcmil 45/7 ACSR	0.365	226 (5740)	45 (1143)	White	Y
SDES-0021	1.592 - 1.657 (40.43 - 42.54)	1780 kcmil 84/19 ACSR	0.468	261 (6620)	45 (1143)	Purple	Y
SDES-0022	1.740 - 1.810 (44.19 - 45.97)	2156 kcmil 84/19 ACSR	0.365	250 (6350)	45 (1143)	Purple	Y
SDES-0023	1.811 - 1.870 (45.99 - 47.49)	2492 kcmil 54/37 ACAR	0.496	280 (7112)	45 (1143)	Purple	Y

NOTES:

- Special Shunts can be designed and produced for longer splice lengths (contact PLP for details)
- For larger conductors special Dead-end Shunts can be produced with a shorter length for applications to the jumper loop (contact PLP for details)
- It is possible to create a Dead-end Shunt Assembly with an additional formed-wire dead-end applied over the shunt and connected to the dead end hardware to provide a portion of the mechanical strength, of the compression dead-end (contact PLP for details)



World Headquarters
660 Beta Drive
Cleveland, Ohio 44143

Mailing Address:
P.O. Box 91129
Cleveland, Ohio 44101

Telephone: 440.461.5200
Fax: 440.442.8816
Web Site: www.preformed.com
E-mail: inquiries@preformed.com

© 2015 Preformed Line Products
Printed in U.S.A.
EN-SS-1130-1
2.15.1M