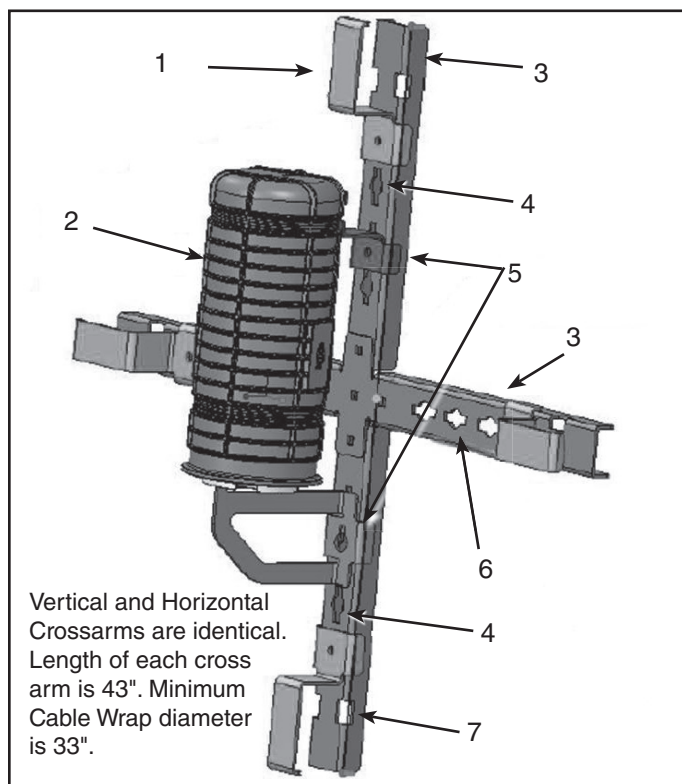




FIBERLIGN® ADSS Storage Bracket

Be sure to read and completely understand this procedure before applying product. Be sure to select the proper PREFORMED™ product before application.

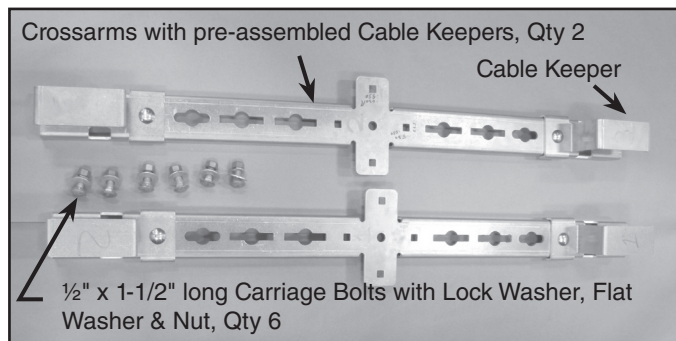


NOMENCLATURE

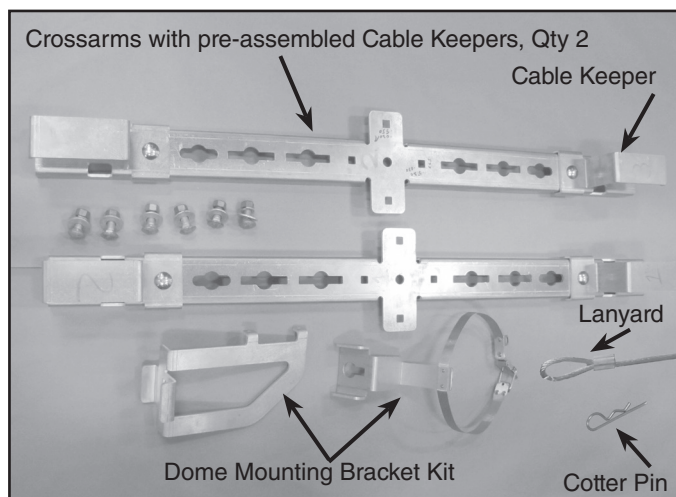
1. Cable Keeper
2. COYOTE® Dome Closure
(Not included - Ordered Separately)
3. Crossarm
4. Key Hole for Pole Mount
Accepts 5/8" Bolt, 2 places
5. Optional Closure Mount
(Two piece Dome Mount with Stabilizer Shown)
6. Fastener holes for closure mount
accept 1/2" Carriage Bolt or Hex head
7. Band Slot accepts 1-1/4" wide band

Catalog Number for Dome Mounting Kits Ordered Separately

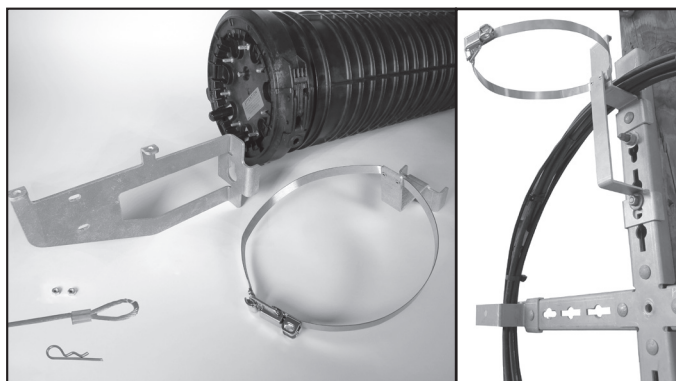
Catalog Number	Dome Size
8004117	6.5" x 17, 6.5" x 22"
80812746	9.5" x 19"
80812938	9.5" x 28"



Vertical Cable Storage Kit – Catalog No. 8004072



Vertical Cable Storage Kit with COYOTE 6.5" Dome Mounting Kit – Catalog No. 8004066
(Catalog No. 800015342LW for Dome Closure 9.5" x 19" Mounting Kit)

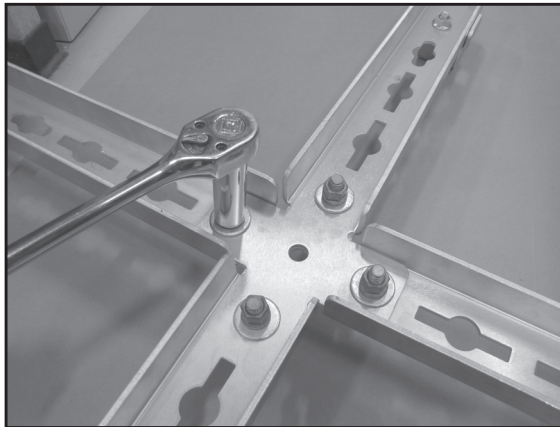


Dome Mounting Kit (9.5" x 19" shown, left photo)
Dome Mounting Kit (9.5" x 28" shown, right photo)

NOTE: Dome not included.

Step #1 Assemble Crossarms

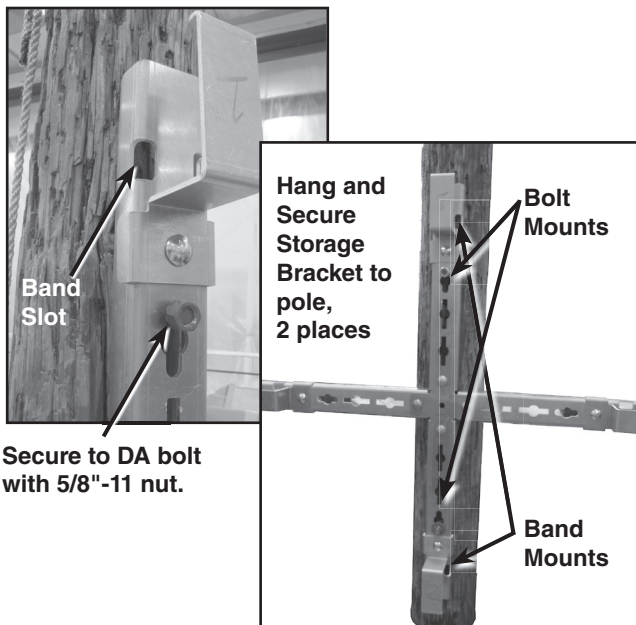
Join the 2 Crossarms using 4 each ½" Carriage Bolts (supplied) at the intersection of the crossarms shown below. Place 0.5" flat washers, lock washers and nuts inside the crossarm channel and tighten with a wrench. (Approximate torque value of 40 ft.-lbs.)



Step #2 Hang on Double Arming bolt or through bolt, or band through band slot.

For wood pole mount, drill through the pole for 5/8" through bolt or the double arming (DA) bolt. Leave 2" of exposed thread for the DA bolt application and install the nut with the lock washer and flat washer. For banding, slide through the band slot and secure. Maximum band width is 1.25".

Once the bracket is secured, cable can be stored in the 33" loop contained within the 4 cable keepers. For cable storage with closures, see Step 3.



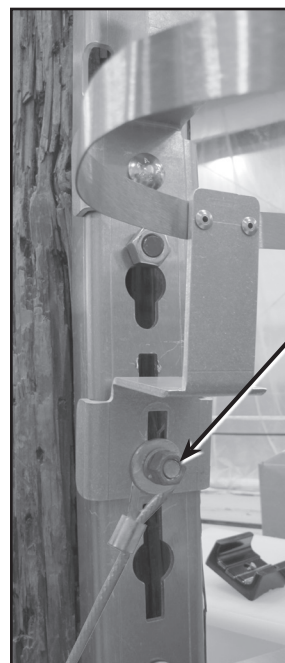
Step #3 Closure Mounting Option

The Cable Storage Bracket may be ordered with the Vertical Closure mounting hardware for various COYOTE® Closure products.

The following steps apply to COYOTE Dome Sizes 6.5" and 9.5".

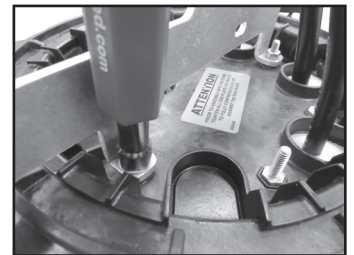
Pre-install a carriage bolt with nut washer, lock washer and lanyard onto the stabilizer bracket. Then, drop the head of the carriage bolt through the keyhole on the cable storage bracket to hang the stabilizer bracket.

Mount the base bracket to the end plate ground studs after splicing (cable not shown below).



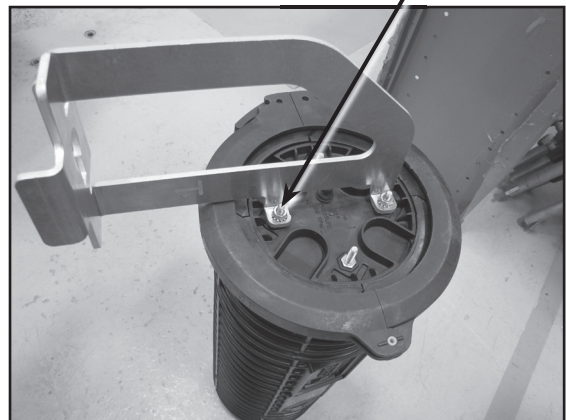
Hang Stabilizer Bracket onto cable storage bracket.

COYOTE Dome Closure 9.5"



Secure base bracket to grounding studs with end plate nuts.

COYOTE Dome Closure 6.5"

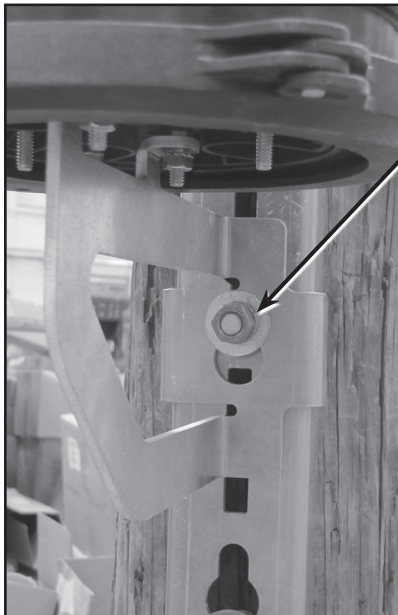


**Step #3,
continued**

Closure Mounting Option

Pre-install a carriage bolt with nut washer and lock washer onto the closure base bracket. Then drop the head of the carriage bolt through the keyhole on the cable storage bracket.

Align the stabilizer bracket and close the latch onto the Dome. Secure the latch to the strike with hairpin cotter. The lanyard keeps the hairpin for future access if the Dome is unlatched.



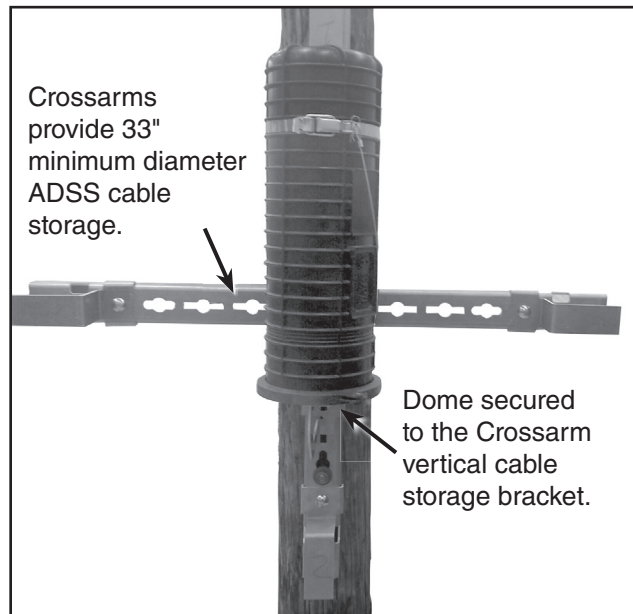
Hang Base Bracket onto cable storage bracket and tighten. (Approximate torque value of 40 ft.-lbs.)



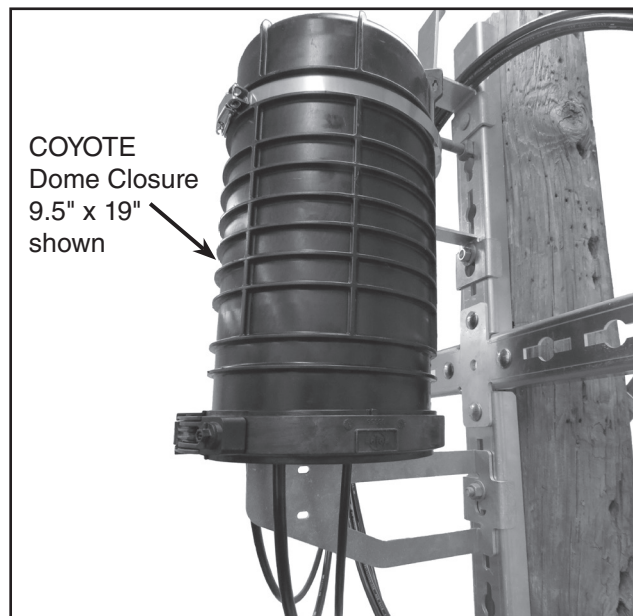
Close the latch and install the hairpin cotter in the strike. The lanyard is secured behind the closure with the same bolt used for the stabilizer bracket.

Step #4 Installation Complete.

FIBERLIGN® ADSS Storage Bracket with COYOTE® DOME Closure 6.5" Mounting Kit - Cat. No. 8004066.



FIBERLIGN® ADSS Storage Bracket with COYOTE® DOME Closure 9.5" Mounting Kit - Cat. No. 800015342LW.



SAFETY CONSIDERATIONS

This application procedure is not intended to supersede any company construction or safety standards. This procedure is offered only to illustrate safe application for the individual. **FAILURE TO FOLLOW THESE PROCEDURES MAY RESULT IN PERSONAL INJURY OR DEATH.**

This product may be removed and reinstalled during the initial installation if it is in good condition. After extended service life, it is recommended the product not be used reused once removed from service

Do not modify this product under any circumstances.

This product is intended for use by trained technicians only. **This product should not be used by anyone who is not familiar with, and not trained to use it.**

When working in the area of energized lines, extra care should be taken to prevent accidental electrical contact.

For proper performance and personal safety, be sure to select the proper size PREFORMED product before application.

PREFORMED products are precision devices. To insure proper performance, they should be stored in cartons under cover and handled carefully.



PREFORMED LINE PRODUCTS

P.O. Box 91129, Cleveland, Ohio 44101 • 440.461.5200 • www.preformed.com • e-mail: inquiries@preformed.com

SP3186-3