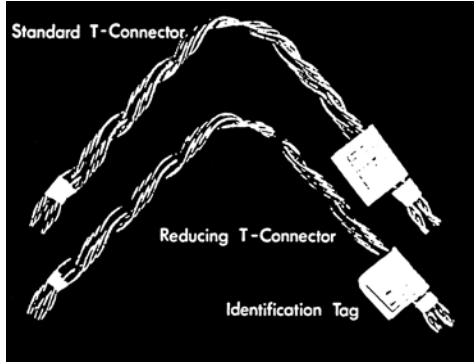


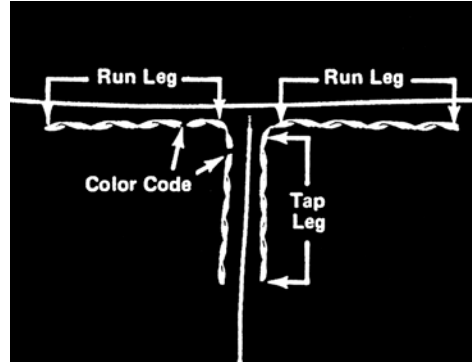


T-Connector

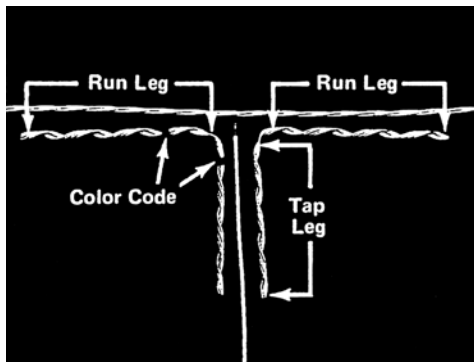
NOMENCLATURE



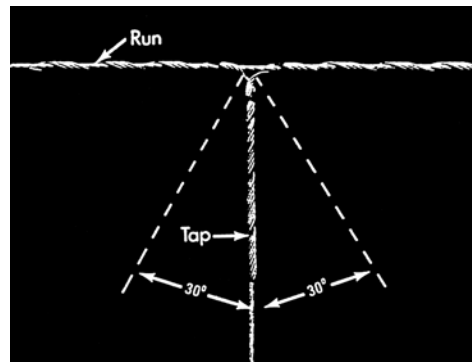
T-Connectors as received in the field



T-Connector For conductors of equal size



T-Connector: Reducing For diameter ratios up to three to one



Line Angles Refer to paragraph below

GENERAL RECOMMENDATIONS

Intended Use: T-Connectors mechanically join slack span laterals (TAP) to vertically spaced primaries (RUN) which can be reached by bucket truck. Extra poles can be eliminated while permitting equal spans for street lighting.

A pair of T-Connectors installed back-to-back provide a mid-span junction for vertically spaced primaries. Poles can be set back from intersections and buck-arms eliminated.

T-Connectors are available for conductors of equal and unequal diameters (REDUCING TYPE).

Holding Strength: T-Connectors are conservatively rated at 25% of the RBS (rated breaking strength) of the smallest conductor. Because of their intended use on slack span laterals or junctions of continuous conductors, mechanical requirements are not expected to approach 25% RBS.

Line Angles: Slack span laterals (TAP) should not exceed the line angle shown in the illustration, to insure ease of application and to avoid over stressing the T-Connector.

Conductivity: T-Connectors, both regular and reducing types, are designed to a minimum conductivity of 100% of the smallest conductor.

T-Connectors are primarily mechanical holding devices. To insure proper long term electrical current transfer, it is suggested that a jumper or shunt be connected directly between the run and tap conductors so that the T-Connector alone is not required to transfer the current.

APPLICATION-INSPECTION: All conductors, new or weathered, must be thoroughly scratch-brushed until bright and clean. Immediately thereafter, an industry accepted inhibitor (compatible with the conductor) should be applied before installing the product.

Thermal Rating (Continuous)
125°C

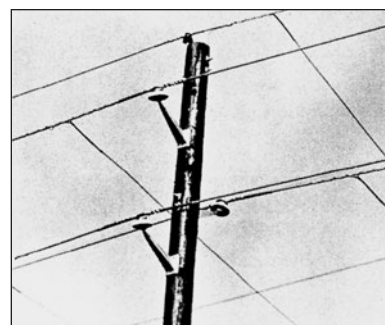
T-Connector

For Conductors of Equal Size

For use on:

ACSR, Aluminum Alloy

All-Aluminum



Catalog Number	Conductor Size Run and Tap Min.	Diameter Range (Inches)		Length of Leg (in.) Run/Tap	Color Codes Run/Tap
		Min.	Max.		
TC-0112	#4, 7W, All Alum.	.229	.239	9	Brown
TC-0113		.240	.246	9	Red
TC-0114	#4, 6/1, 7/1	.247	.257	10	Orange
TC-0115	#3, 7W, All Alum.	.258	.270	10	Green
TC-0116		.271	.280	10	Yellow
TC-0117		.281	.289	10	White
TC-0118	#2, 7W, All Alum.	.290	.298	11	Purple
TC-0119		.299	.310	12	Brown
TC-0120	#2, 6/1, 7/1 #2, 7W, All Alum.	.311	.325	12	Red
TC-0121	#1, 7W, All Alum.	.326	.340	12	Blue
TC-0122	#1, 5/1	.341	.351	13	Orange
TC-0123	#1, 6/1	.352	.367	13	Green
TC-0124		.368	.380	14	Black
TC-0125	1/0, 6/1 1/0, 7W, Alum. Alloy	.381	.398	14	Yellow
TC-0126		.399	.413	15	Purple
TC-0127	2/0, 7W, All Alum.	.414	.425	15	Brown
TC-0128	2/0, 18/1	.426	.443	16	Red
TC-0129	2/0, 7W, Alum. Alloy	.444	.462	16	Blue
TC-0130	3/0, 7W, All Alum.	.463	.481	17	Green
TC-0131	3/0, 6/1 3/0, 7W, Alum. Alloy	.482	.503	18	Orange
TC-0132		.504	.521	18	Black
TC-0133	4/0, 7W, All Alum.	.522	.544	19	Yellow
TC-0134	4/0, 6/1 4/0, 7W, Alum. Alloy	.545	.567	20	Red
TC-0135	250, 19W, All Alum. 266.8, 7W-19W, All Alum. 159, 12/7	.568	.594	21	Blue
TC-0136	266.8, 18/1 266.8, Alum. Alloy	.595	.618	22	Purple
TC-0137	266.8, 26/7 300, 19W-37W, All Alum.	.619	.644	27	Yellow
TC-0138	300, 18/1 336.4, 19W-37W, All Alum.	.645	.671	28	Brown
TC-0139	300, 26/7, 30/7 336.4, 18/1, 36/1	.672	.700	29	Orange
TC-0140	336.4, 26/7 397.5, 19W-37W, All Alum.	.701	.729	30	Green
TC-0141	336.4, 30/7 397.5, 18/1	.730	.760	31	Black
TC-0142	397.5, 26/7 297.5, 19W-37W, Alum. Alloy	.761	.792	33	Purple
TC-0143	477, 18/1, 36/1 477, 19W-37W, All Alum.	.793	.825	34	Red
TC-0144	477, 24/7	.826	.850	36	Blue
TC-0145	477, 26/7 556.5, 19W-37W, All Alum.	.851	.886	37	Orange
TC-0146	605, 36/1 636, 37W-61W, All Alum.	.887	.929	39	Black
TC-0147	636, 18/1, 36/1 605, 37W, Alum. Alloy	.930	.968	40	Brown
TC-0148	666.6, 24/7 636, 37W, All Alum.	.969	1.008	42	Yellow
TC-0149	795, 36/1 795, 37W-61W, All Alum.	1.009	1.050	43	Green
TC-0150	795, 45/7 715.5, 37W, Alum. Alloy	1.051	1.091	47	Black
TC-0151	795, 26/7 795, 37W, Alum. Alloy	1.092	1.136	48	Purple

Right-hand lay standard

EXPLANATORY NOTES:

- (1) Nominal Conductor Size indicates one of various conductors within each range.
- (2) General Recommendations for T-Connectors are referenced earlier in this section.